



20'
WIDE HOMES



Moduline
Homes

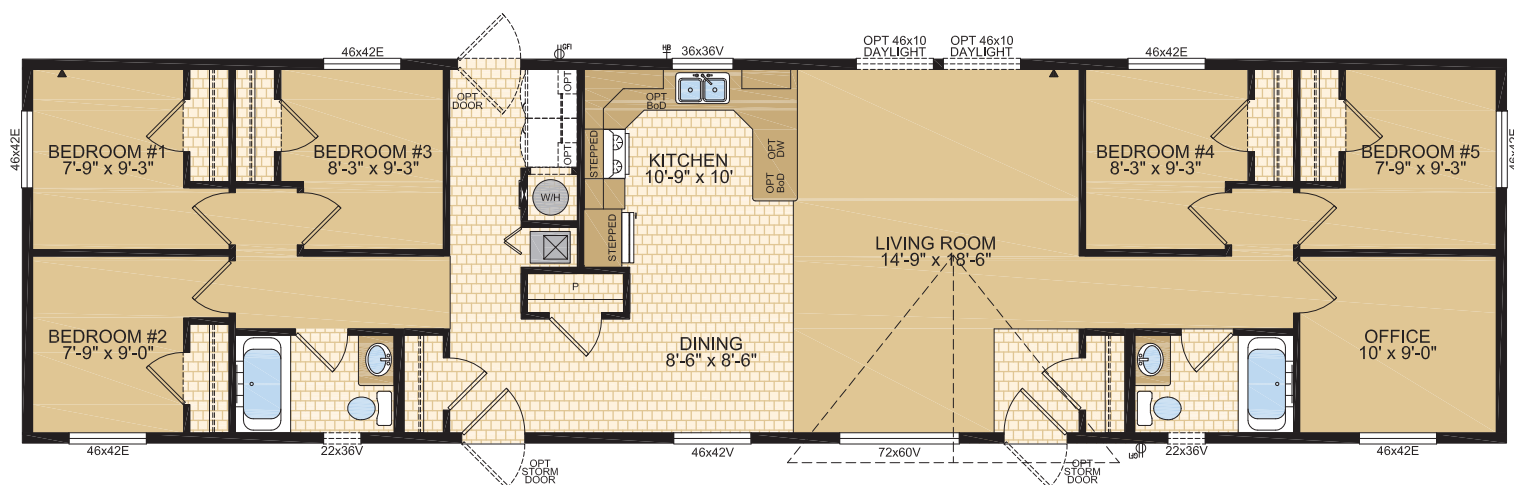
CANADIAN BUILT
SINCE 1970



Exterior shown is an artistic rendering only.

WESTON Model 20557

5 Beds | 2 Baths | Office
20' x 76' ~ 1,520 sq. ft.



1421 Brier Park Crescent, Medicine Hat, Alberta T1C 1T8 Phone: (403) 527-1555 Fax: (403) 528-4486 modulinemedicinehat.com

In a continued effort to meet the challenges of product improvement, we reserve the right to modify plans, specifications and features without prior notice. Some homes may show optional items which are not standard. Please consult your dealer representative for details. Square footage and room sizes are approximate.