



SINGLE AND MULTI-SECTION HOMES



[www.modulinemedicinehat.com](http://www.modulinemedicinehat.com)



Scan on your Mobile Device to see all of our homes online.





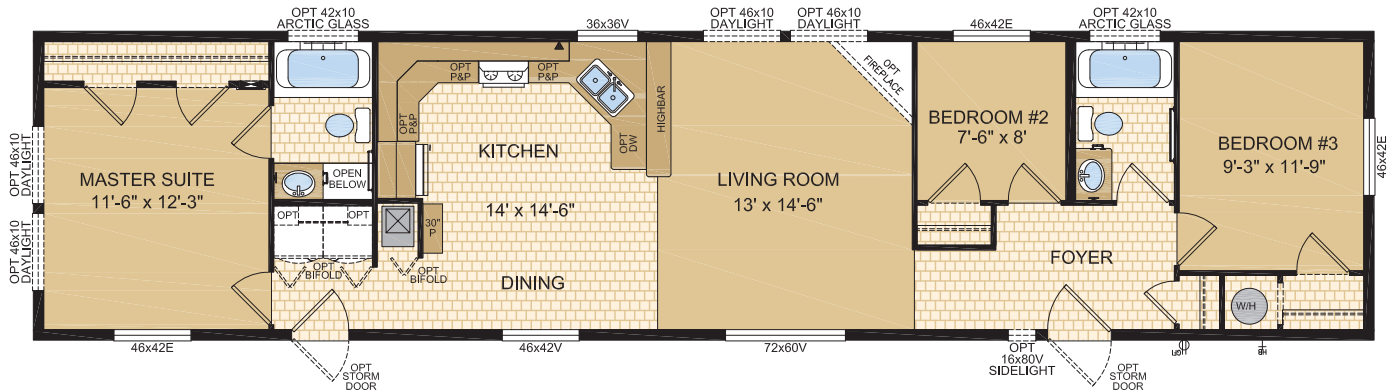
# LEGACY

## HOME SERIES

### BRUGES

#### MODEL 16200

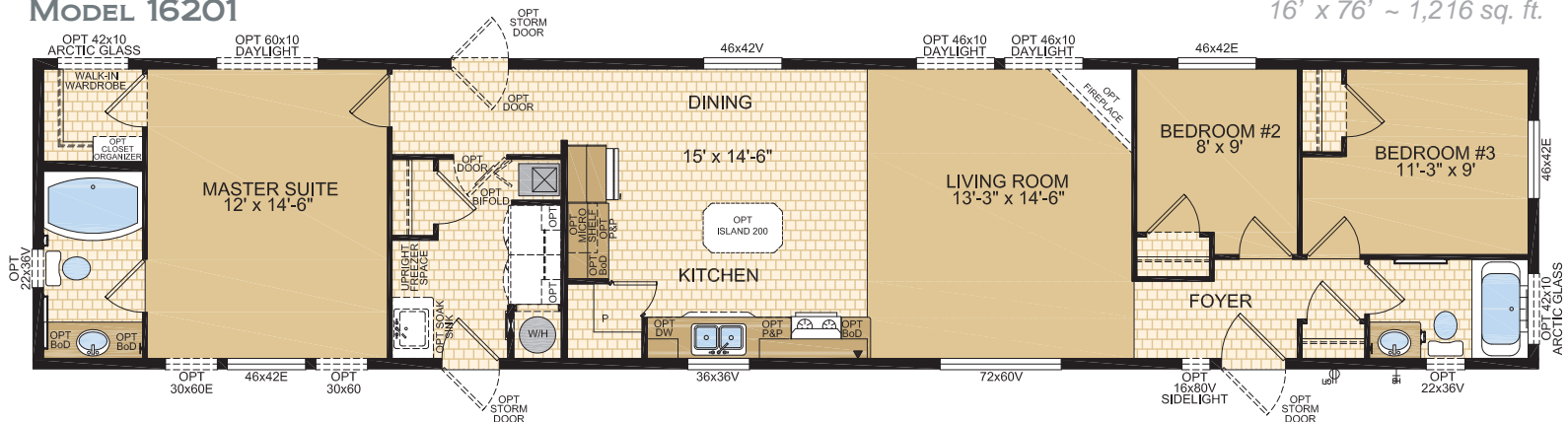
3 Beds | 2 Baths  
16' x 68' ~ 1,088 sq. ft.



### ROTHENBURG

#### MODEL 16201

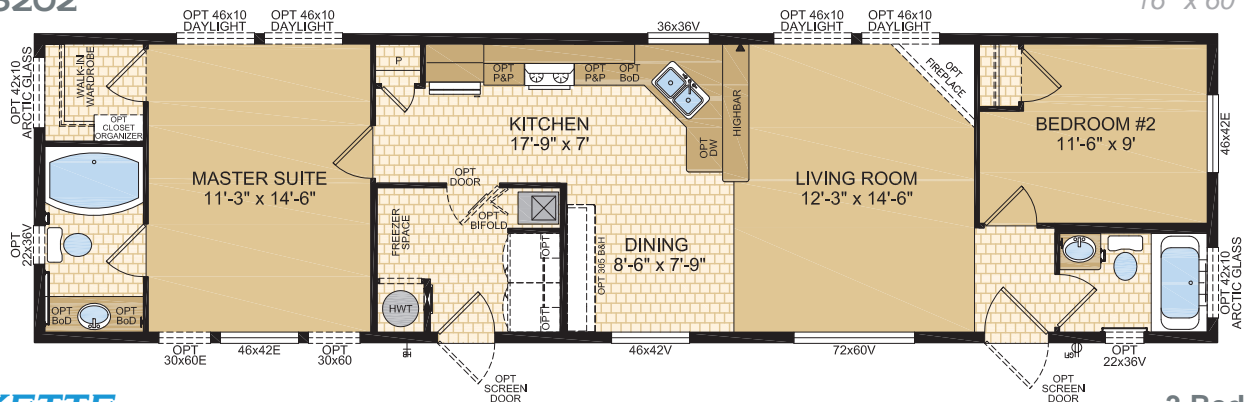
3 Beds | 2 Baths  
16' x 76' ~ 1,216 sq. ft.



### ST. MICHEL

#### MODEL 16202

2 Beds | 2 Baths  
16' x 60' ~ 960 sq. ft.

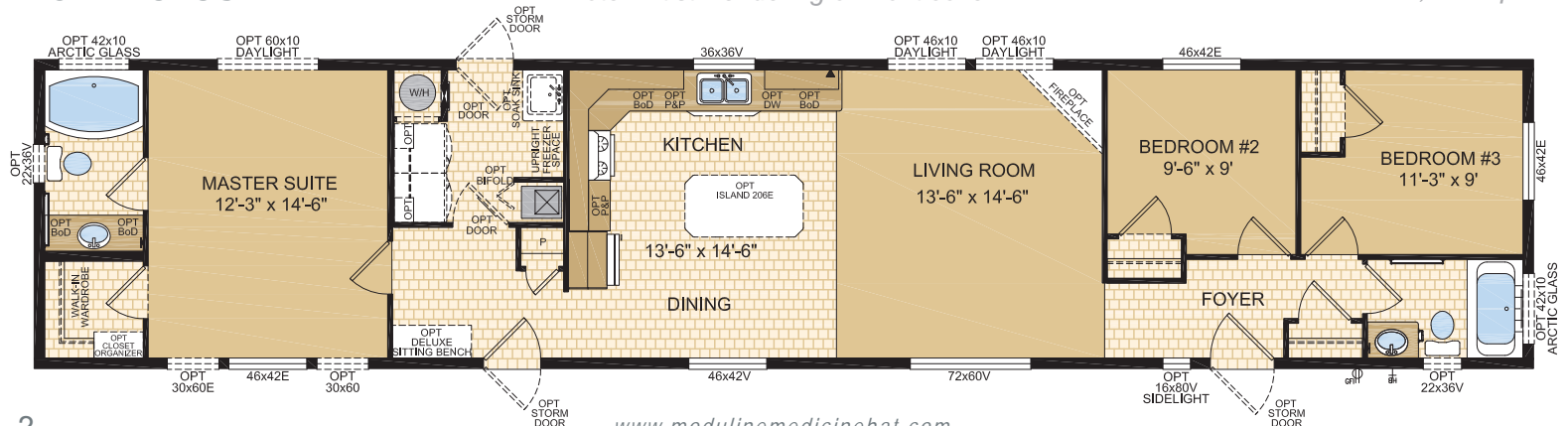


### LAFAYETTE

#### MODEL 16203

3 Beds | 2 Baths  
16' x 76' ~ 1,216 sq. ft.

Note: Artist Rendering on front cover





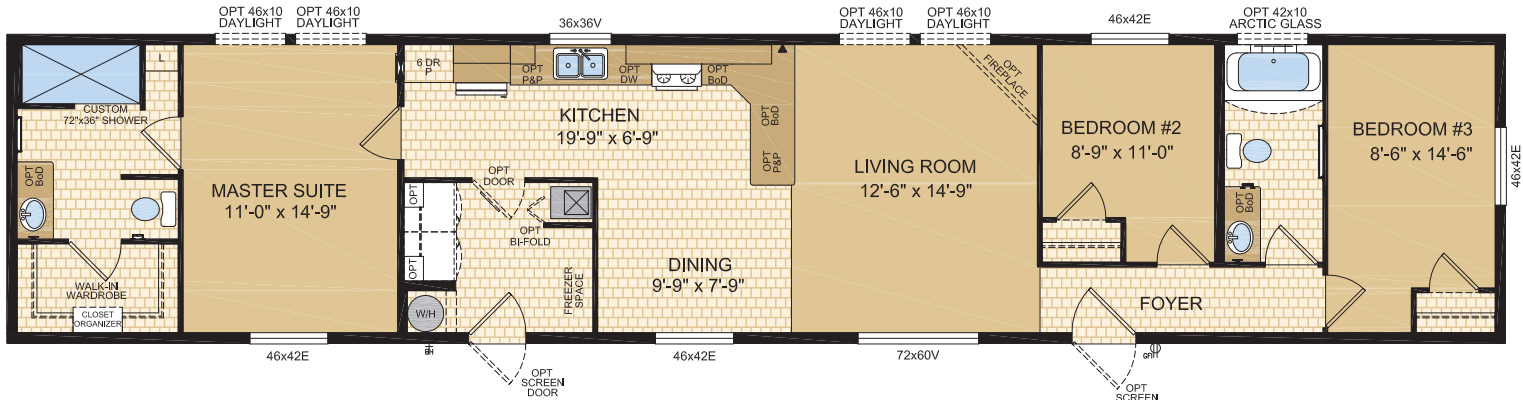
# LEGACY

HOME SERIES

## LUNA

MODEL 16205

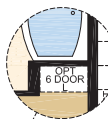
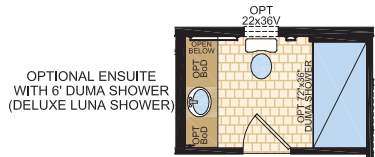
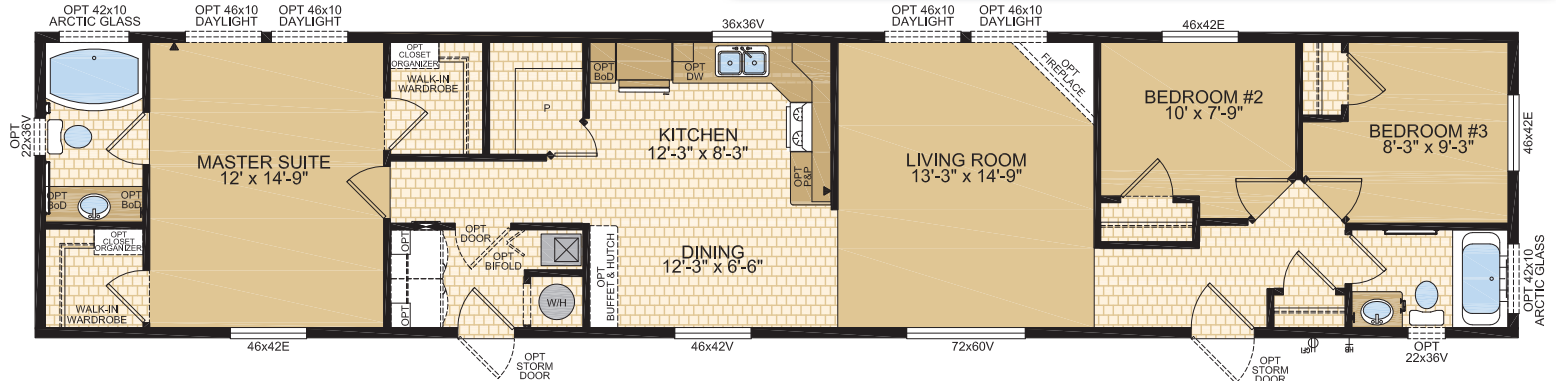
3 Beds | 2 Baths  
16' x 76' ~ 1,216 sq. ft.



## AUSTIN

MODEL 16206  
3 Beds | 2 Baths  
16' x 76' ~ 1,216 sq. ft.

Options shown in image: Alys Front Door, 9-Lite Rear Door, Painted Smartboard Window Trim, Board & Batten, Bath Window, Artic Glass Window, 46x60v Windows ILO 46x42 in Master Suite Dining & Bedroom #3, Dormer.

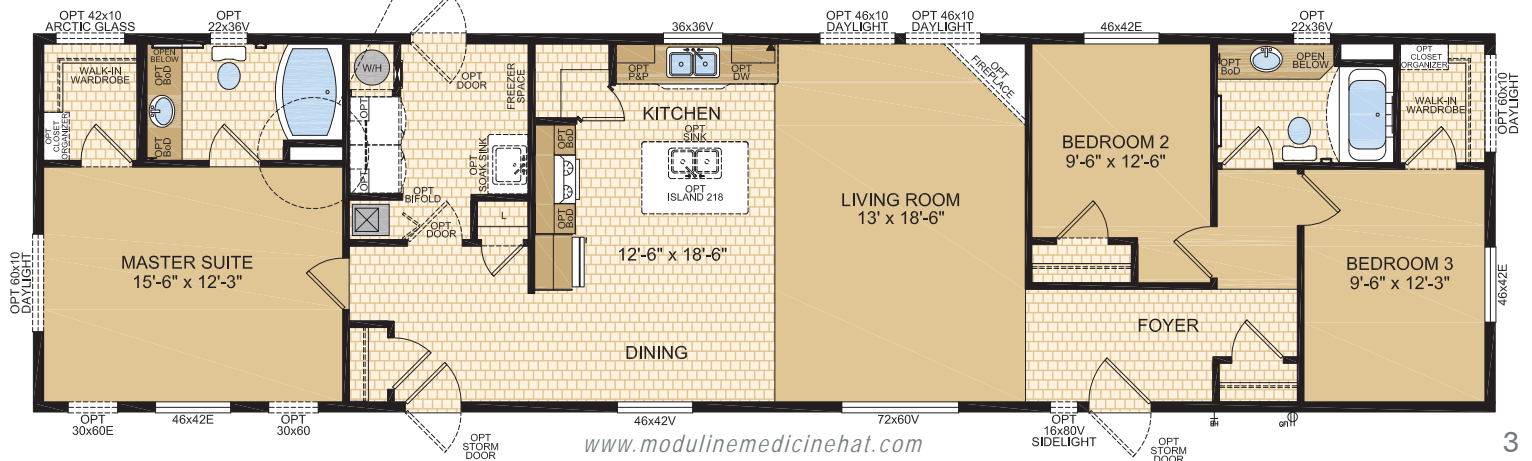


SHOWN w/OPTIONAL  
6 DOOR LINEN

## ST. PAUL

MODEL 20201

3 Beds | 2 Baths  
20' x 76' ~ 1,520 sq. ft.







# LEGACY

HOME SERIES

**HALLSTAT**  
MODEL 20202

**4 Beds | 2 Baths**  
20' x 76' ~ 1,520 sq. ft.

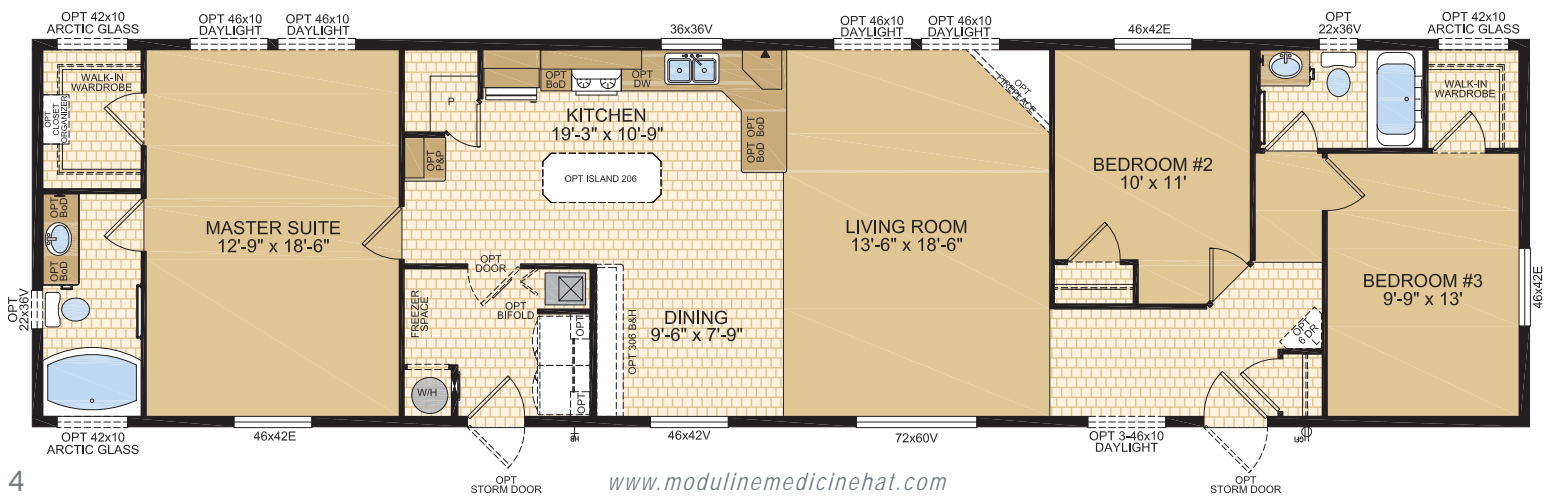


**BORDEN**  
MODEL 20204

**3 Beds | 2 Baths**  
20' x 76' ~ 1,520 sq. ft.



Options shown in image: 9-Lite Front & Rear Doors, Painted Smartboard Corner and Window Trim, Stacked Stone, Artic Glass Window, 3-46x10 Daylight Windows, Dormer.







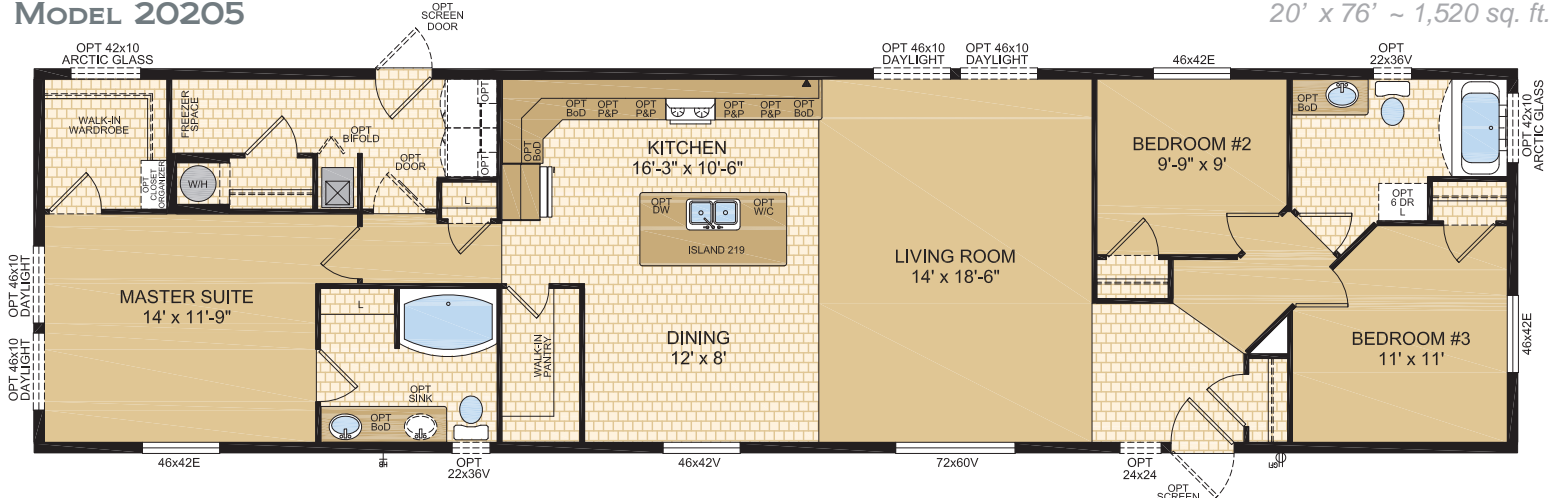
# LEGACY

HOME SERIES

## HAWKESBURY

MODEL 20205

3 Beds | 2 Baths  
20' x 76' ~ 1,520 sq. ft.



## BELLBROOK

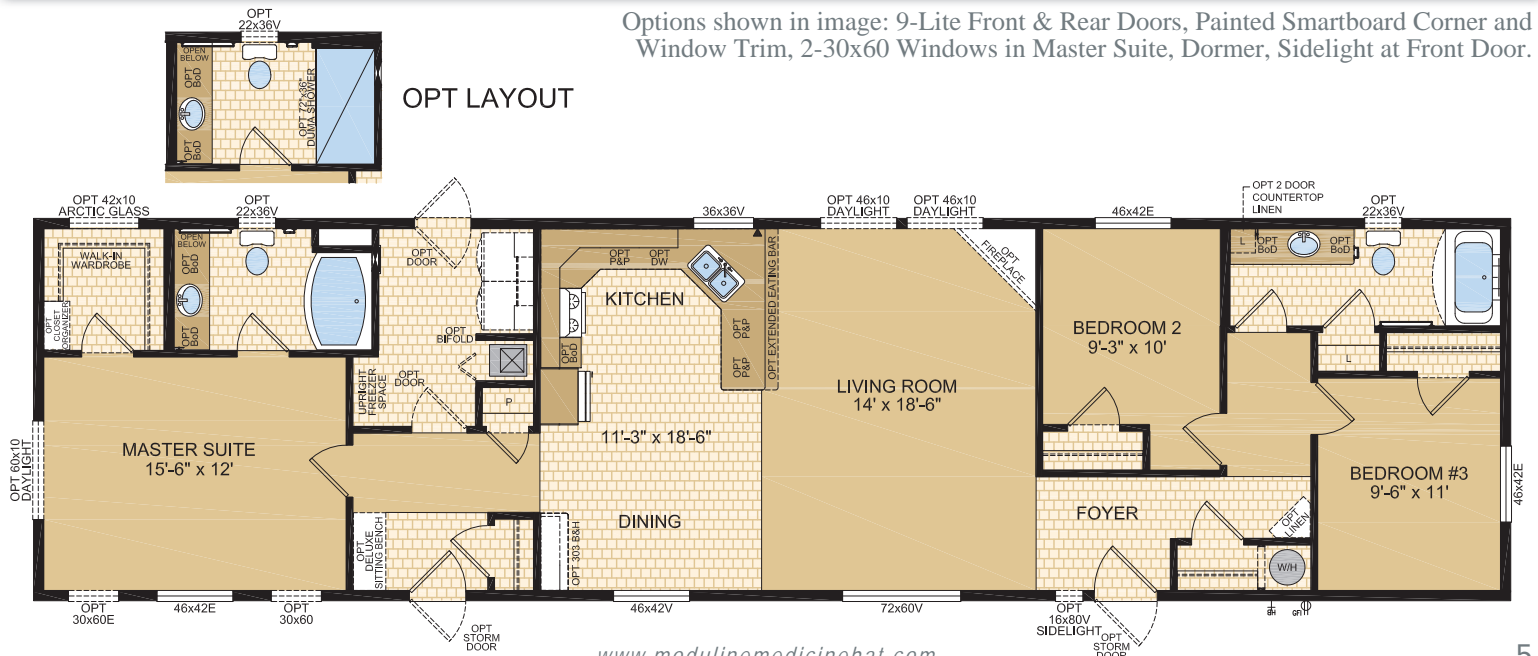
MODEL 20206

3 Beds | 2 Baths  
20' x 76' ~ 1,520 sq. ft.



Options shown in image: 9-Lite Front & Rear Doors, Painted Smartboard Corner and Window Trim, 2-30x60 Windows in Master Suite, Dormer, Sidelight at Front Door.

### OPT LAYOUT



## 16' & 20' WIDES STANDARD FEATURES & SPECIFICATIONS

General Construction	
Building Code	A-277 Zone 7A*
Snow Load	Live load 42 psf (2.01 kPa) Ground snow load 72.6 psf (3.48 kPa)
Insulation R Values	Floors R-40, Walls R-22 & Ceiling R-46 (min) Meets zone 8 of the 9.36 Energy Code**
Floor	2"x10" floor joists @ 16" o.c. Heavy tubular steel frame w/detachable hitch
Decking	19/32" T & G OSB floor decking; glued and screwed
Roof	4/12 roof pitch; hinged roof trusses (Fixed roof available with truss floor option on 30' wides or less, may require overheight permit) 7/16" roof sheathing Architectural asphalt shingles - limited lifetime warranty
Eaves	18" vented eaves all 4 sides
Siding	Maintenance free vinyl lap siding & corners
Weather Protection	White house wrap
Fascia	Coloured metal
Soffit	White vinyl
Building Envelope	Meets 0.20 L/M2S
Exterior Walls	2"x6", 24" o.c. 3/8" OSB sheathing inside & outside of wall Shipping wall included on T/S models
Interior Walls	2"x4" Interior walls 8' ceilings Cathedral ceiling in living, dining, and kitchen
Ceiling	Textured (primed) gyproc ceiling
Windows	1.36 U-value, dual low E argon filled PVC (meets zone 8 of the 9.36 Energy Code)* c/w vinyl sills, screens and security locks
Living Room	72x60v - Sliding
Dining Room	46x42v - Sliding
Bedrooms	46x42v - Sliding
Kitchen (most models)	36x36v - Sliding
Family Room (if app.)	46x42v - Sliding
Exterior Doors	36" Decorative insulated entry door - Front 32" Decorative insulated entry door - Rear Includes deadbolt & peephole Round door knob - satin nickel Coach lights at all exterior entrances Pot light ILO coach light at porch entrances & recessed entrances

Spacious Baths	
Tile	Single row
Fixtures	One-piece quality fiberglass oval tub & shower unit - ensuite One-piece quality fiberglass tub & shower unit - main bath 36" shower stall w/sliding glass doors (model 30404 only) White oval drop in sink Single flush toilet
Faucets	Dual handle vanity faucets Single lever faucet on tub/shower unit
Hardware	Curved Shower rods in all tubs Towel bar, ring & paper holder - chrome
Vanity	Expansive vanity mirrors
Countertop Heights:	32" in all bathrooms
Electrical	GFI receptacle Power bath fan(s)
Lighting	Hampton light fixture

Tasteful Interiors	
Flooring	Carpet in living room, all bedrooms and hallways Quality linoleum flooring all other areas
Blinds	Cellular cordless blinds (excl bathrooms)
Interior Doors	Pre-finished interior doors in Crystal White colour
Interior Door Handles	Round door knob - satin nickel Privacy locks on bathroom doors excluding ensuite. If bathroom is an ensuite, bdrm door will have privacy set.
Closets	Solid white shelving
Wall Finish	Decorative 1/2" vinyl on gyproc (VOG) Battens on joints
Moulding	Vinyl wrapped Matches cabinet colour (excl white)
Windows & Doors	#3007 (2-1/4")
Ceiling	Flat #3000 (1-5/8"); Vault #161 (1-3/16")
Baseboards	#215 (1-1/2")
Electrical	Decora switches & recepts - white
Lighting	Ceiling mount in all bdrms, halls & utility room Decorative chandelier in dining room - chrome

Bright, Beautiful Kitchens	
Tile	Single row
Range	30" electric - white Exterior vented range hood w/light - white
Fridge	19 cu.ft., 2-door, frost free - white Opening: 34" x 69-3/4"
Sink	Double stainless steel sink Dual handle faucet - chrome
Spacious Pantry	Selected models
Cabinets	Doweled, full modular cabinetry Cabinet crown moulding Five distinctive colors of cabinet doors w/ matching moulding & trim colour
Countertop	Arborite
Lighting	Ceiling mount

Utility Services	
Electrical Service	100 amp
Heating	High efficiency (95+AFUE) single stage furnace Natural gas / propane Programmable thermostat
Water Heater	39 Imp. (45 US) gallon electric 3m Insulated water lines on hot & cold
Washer / Dryer	Plumbed, wired & vented for washer/dryer Solid shelf above washer/dryer location
Electrical - Other	Primary exhaust fan w/dehumidistat & switch Smoke detectors w/battery backup in bdrms CO/Smoke Detector(s) w/battery backup locations as per code Arc fault protection as required by code GFI protected receptacle for heat tape Dedicated receptacle in "Freezer Area" Exterior GFI electrical outlet by front door Blank communication outlet in kitchen
Plumbing - Other	Exterior frost free water tap



# LEGACY

HOME SERIES

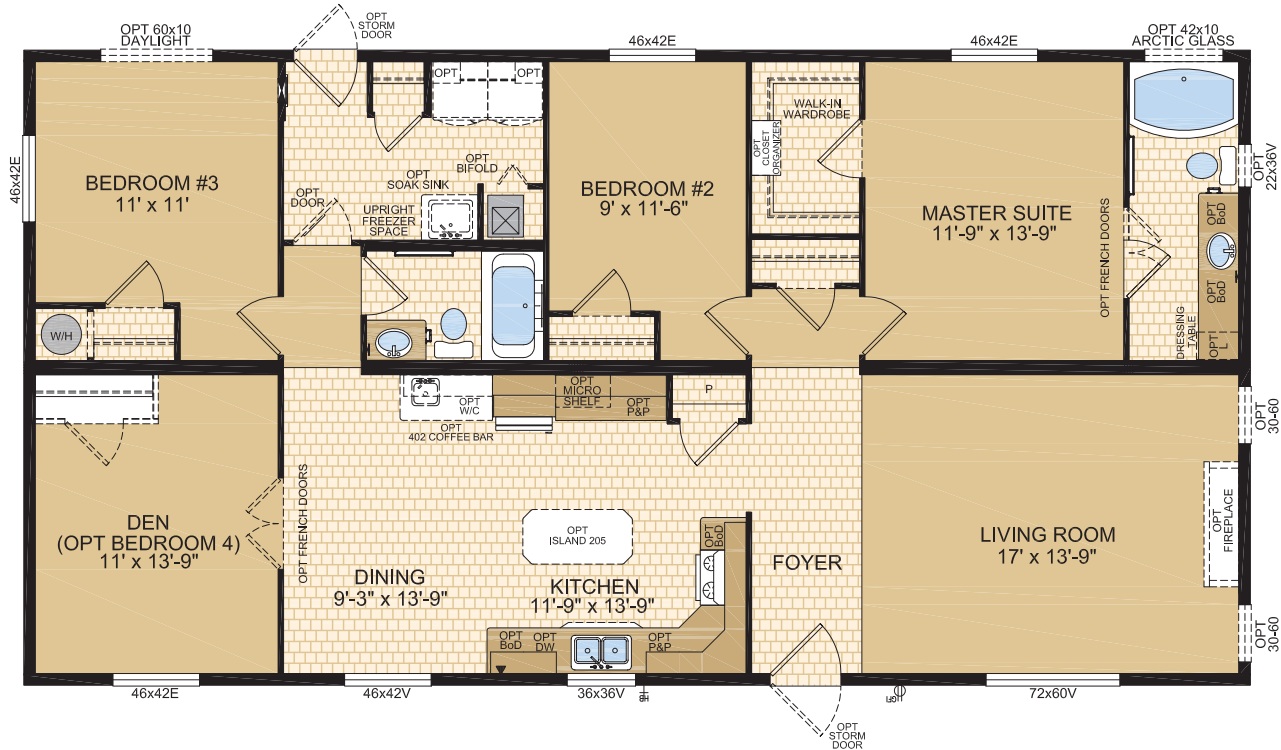
**ROMANIA**  
MODEL 30400

**3 Beds | 2 Baths | Den**

29' x 56' ~ 1,624 sq. ft.

Note: Artist Rendering on front cover

**OPTIONAL  
FOUNDATION**

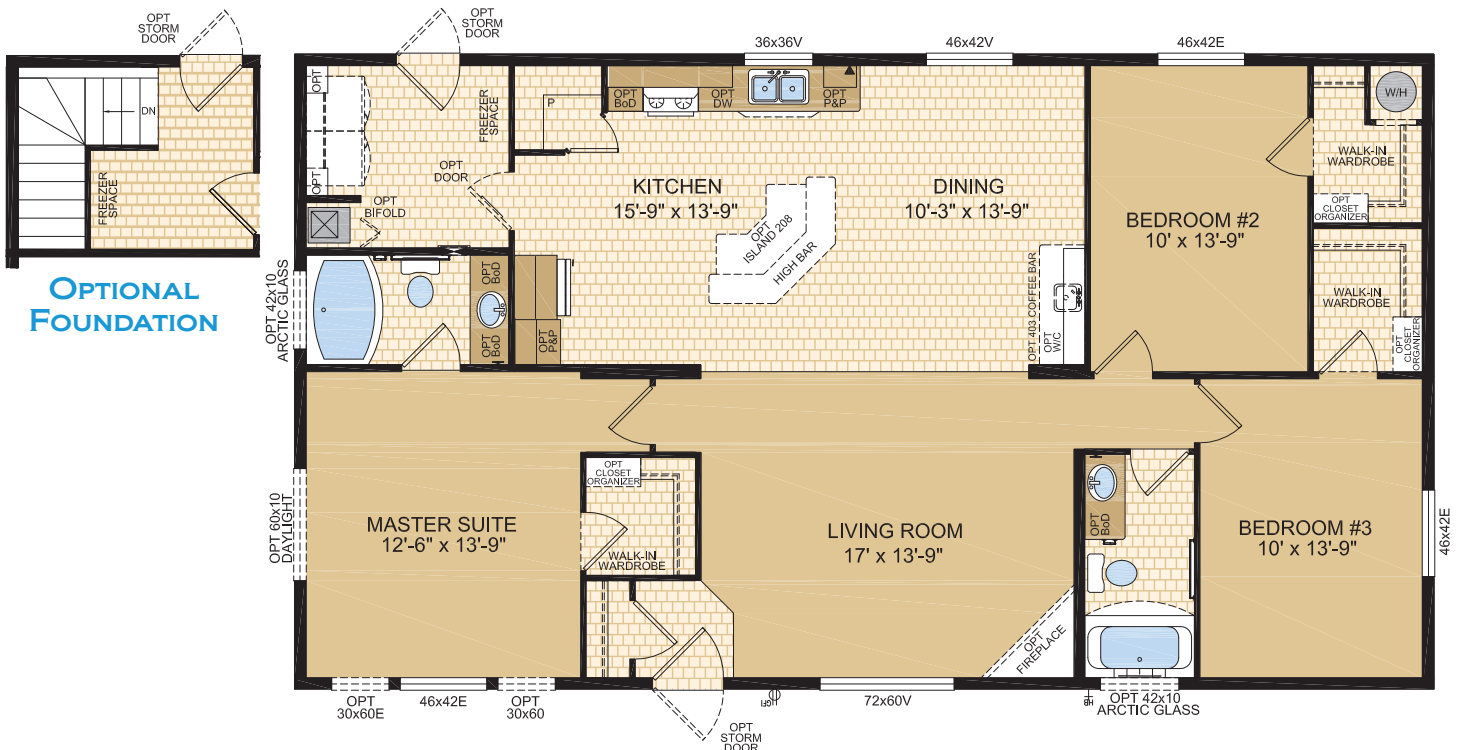


**SAN MARINO**  
MODEL 30401

**3 Beds | 2 Baths**

29' x 52' ~ 1,508 sq. ft.

**OPTIONAL  
FOUNDATION**



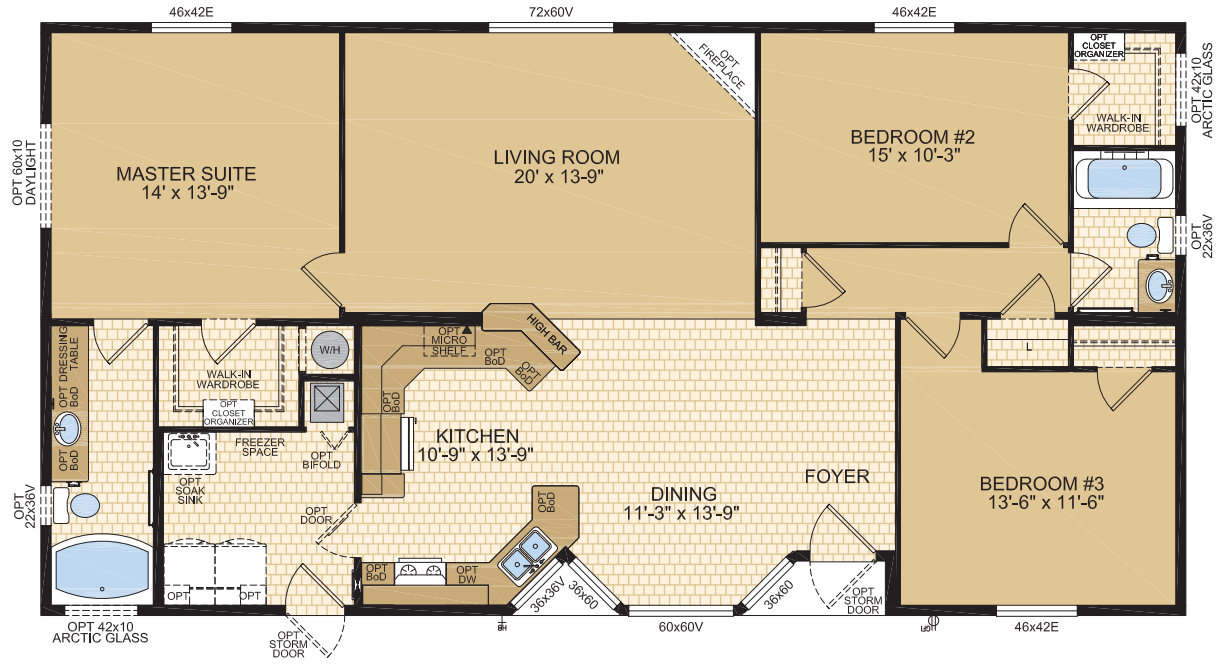
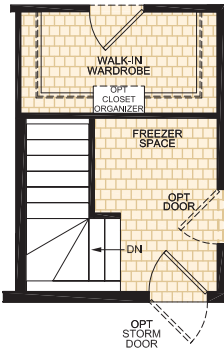


## BAMBERG

MODEL 30402

3 Beds | 2 Baths  
29' x 56' ~ 1,624 sq. ft.

### OPTIONAL FOUNDATION



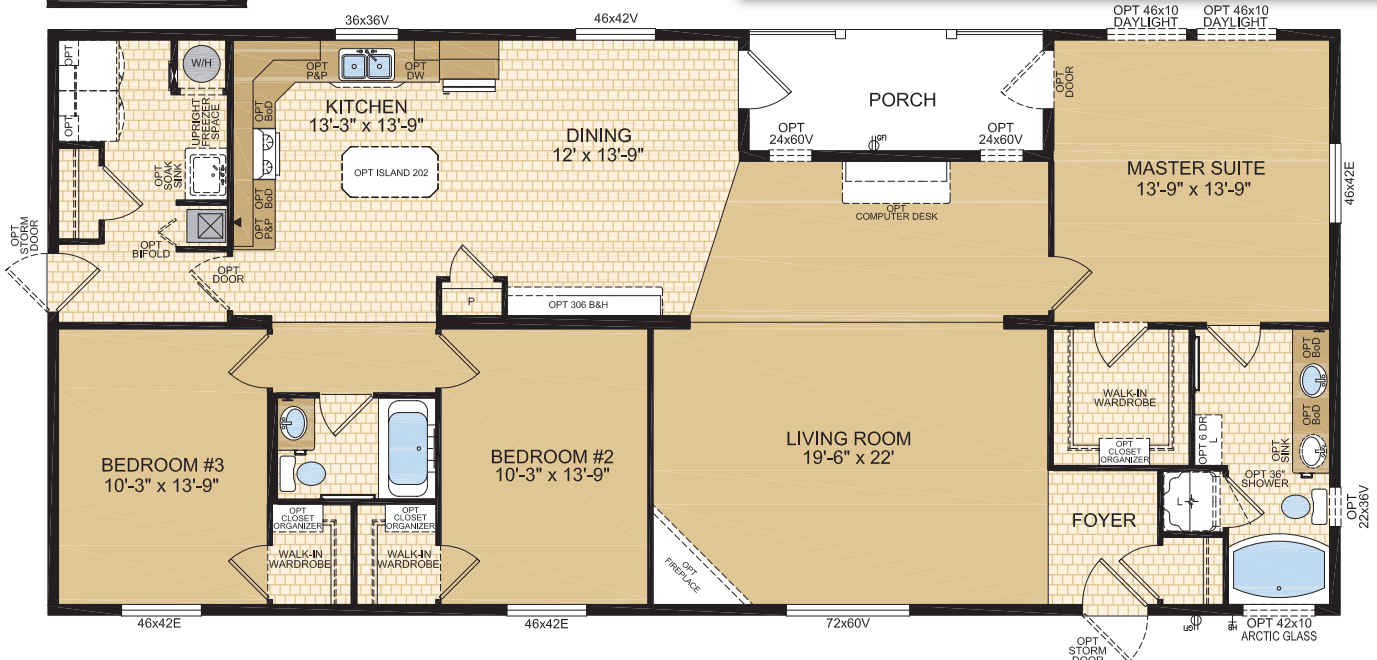
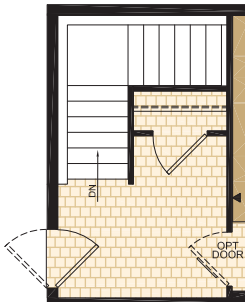
## MONSANTO

MODEL 30403

3 Beds | 2 Baths | Porch  
29' x 64' ~ 1,856 sq. ft.

Options shown in image: 9-Lite Front Door, Arctic Glass Window, Bath Window, Shakes, Tudor Columns, Painted Smartboard Window Trim.

### OPTIONAL FOUNDATION

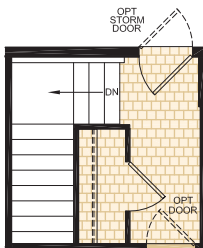






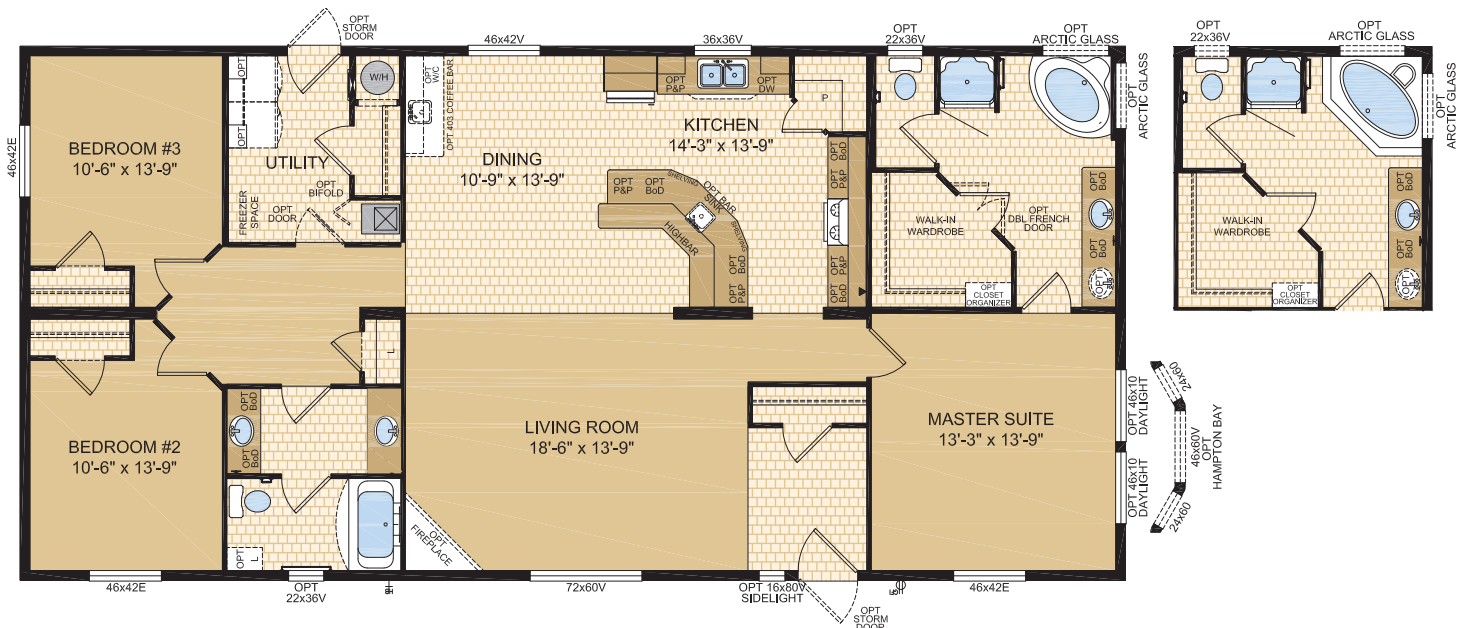
**SALZBURG**  
MODEL 30404

**3 Beds | 2 Baths**  
29' x 60' ~ 1,740 sq. ft.



## OPTIONAL FOUNDATION

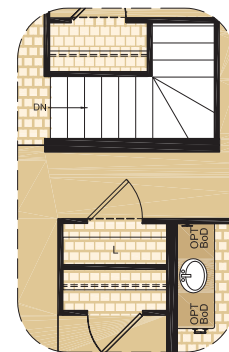
Options shown in image: 9-Lite Front Door, Painted Smartboard Window Trim  
Corners and Door Trim, Valleyview Bay, Bath Window, 2-24x60 Windows in Living  
Room, Sidelight at Front Door, 2-30x60v Windows ILO 46x42 in Master Suite,  
Daylight Windows, Caspian Columns.







**3 Beds | 2 Baths**  
32' x 38' ~ 1,216 sq. ft.





## MULTI SECTION STANDARD FEATURES & SPECIFICATIONS

General Construction	
Building Code	A-277 Zone 7A*
Snow Load	Live load 42 psf (2.01 kPa) Ground snow load 72.6 psf (3.48 kPa)
Insulation R Values	Floors R-40, Walls R-22 & Ceiling R-46 (min) Meets zone 8 of the 9.36 Energy Code**
Floor	2"x10" floor joists @ 16" o.c. Heavy tubular steel frame w/detachable hitch
Decking	19/32" T & G OSB floor decking; glued and screwed
Roof	4/12 roof pitch; hinged roof trusses (Fixed roof available with truss floor option on 30' wides or less, may require overheight permit) 7/16" roof sheathing Architectural asphalt shingles - limited lifetime warranty
Eaves	18" vented eaves all 4 sides
Siding	Maintenance free vinyl lap siding & corners
Weather Protection	White house wrap
Fascia	Coloured metal
Soffit	White vinyl
Building Envelope	Meets 0.20 L/M2S
Exterior Walls	2"x6", 24" o.c. 3/8" OSB sheathing inside & outside of wall Shipping wall included on T/S models
Interior Walls	2"x4" Interior walls 8' ceilings Cathedral ceiling in living, dining, and kitchen
Ceiling	Textured (primed) gyproc ceiling
Windows	1.36 U-value, dual low E argon filled PVC (meets zone 8 of the 9.36 Energy Code)* c/w vinyl sills, screens and security locks
Living Room	72x60v - Sliding
Dining Room	46x42v - Sliding
Bedrooms	46x42v - Sliding
Kitchen (most models)	36x36v - Sliding
Family Room (if app.)	46x42v - Sliding
Exterior Doors	36" Decorative insulated entry door - Front 32" Decorative insulated entry door - Rear Includes deadbolt & peephole Round door knob - satin nickel Coach lights at all exterior entrances Pot light ILO coach light at porch entrances & recessed entrances

Spacious Baths	
Tile	Single row
Fixtures	One-piece quality fiberglass oval tub & shower unit - ensuite One-piece quality fiberglass tub & shower unit - main bath 36" shower stall w/sliding glass doors (model 30404 only) White oval drop in sink Single flush toilet
Faucets	Dual handle vanity faucets Single lever faucet on tub/shower unit
Hardware	Curved Shower rods in all tubs Towel bar, ring & paper holder - chrome
Vanity Countertop Heights:	Expansive vanity mirrors 32" in all bathrooms
Electrical	GFI receptacle Power bath fan(s)
Lighting	Hampton light fixture

Tasteful Interiors	
Flooring	Carpet in living room, all bedrooms and hallways Quality linoleum flooring all other areas
Blinds	Cellular cordless blinds (excl bathrooms)
Interior Doors	Pre-finished interior doors in Crystal White colour
Interior Door Handles	Round door knob - satin nickel Privacy locks on bathroom doors excluding ensuites. If bathroom is an ensuite, bdrm door will have privacy set.
Closets	Solid white shelving
Wall Finish	Decorative 1/2" vinyl on gyproc (VOG) Battens on joints
Moulding	Vinyl wrapped Matches cabinet colour (excl white)
Windows & Doors	#3007 (2-1/4") Ceiling Flat #3000 (1-5/8"); Vault #161 (1-3/16") Baseboards #215 (1-1/2")
Electrical	Decora switches & recepts - white
Lighting	Ceiling mount in all bdms, halls & utility room Decorative chandelier in dining room - chrome

Bright, Beautiful Kitchens	
Tile	Single row
Range	30" electric - white Exterior vented range hood w/light - white
Fridge	19 cu.ft., 2-door, frost free - white Opening: 34" x 69-3/4"
Sink	Double stainless steel sink Dual handle faucet - chrome
Spacious Pantry Cabinets	Selected models Doweled, full modular cabinetry Cabinet crown moulding Five distinctive colors of cabinet doors w/ matching moulding & trim colour
Countertop	Arborite
Lighting	Ceiling mount

Utility Services	
Electrical Service	100 amp
Heating	High efficiency (95+AFUE) single stage furnace Natural gas / propane Programmable thermostat
Water Heater	39 Imp. (45 US) gallon electric 3m Insulated water lines on hot & cold
Washer / Dryer	Plumbed, wired & vented for washer/dryer Solid shelf above washer/dryer location
Electrical - Other	Primary exhaust fan w/dehumidistat & switch Smoke detectors w/battery backup in bdms CO/Smoke Detector(s) w/battery backup locations as per code Arc fault protection as required by code GFI protected receptacle for heat tape Dedicated receptacle in "Freezer Area" Exterior GFI electrical outlet by front door Blank communication outlet in kitchen
Plumbing - Other	Exterior frost free water tap



[www.modulinemedicinehat.com](http://www.modulinemedicinehat.com)

## Exterior Wall Construction

*Best Standard in the Housing Industry!*

2"X6" EXTERIOR WALLS CONSTRUCTED  
@ 24" O/C TO MAXIMIZE ENERGY  
EFFICIENCY

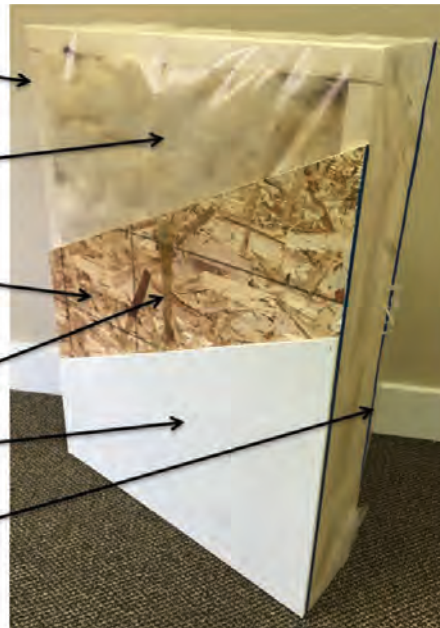
R20 INSULATION WITH 6 MIL POLY  
(R22 ZONES 6 TO 8 UNDER  
9.36 ENERGY CODE)

3/8" STRUCTURAL INTERIOR OSB  
FOR THE STRONGEST WALL IN THE  
INDUSTRY

ALPHA GLUE TO MAXIMIZE STRENGTH AND  
MAINTAIN HOMES INTEGRITY

VINYL COVERED GYPROC FASTENED TO  
OSB USING ALPHA GLUE SYSTEM

3/8" STRUCTURAL EXTERIOR OSB FASTENED  
TO STUDS WITH SHEATHING STAPLES



*"We surpass the competition!"*



Follow us:



1421 Brier Park Crescent, Medicine Hat, Alberta T1C 1T8 Phone: (403) 527-1555 Fax: (403) 528-4486  
In a continued effort to meet the challenges of product improvement, we reserve the right to modify plans, specifications and features without prior notice. Some homes may show optional items which are not standard. Please consult your dealer representative for details. Square footage and room sizes are approximate.