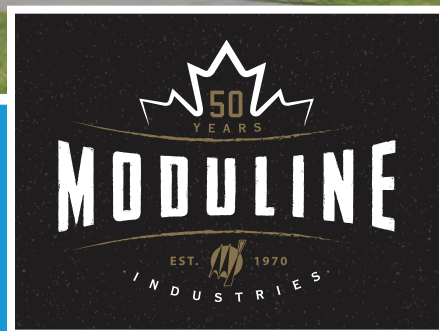




SINGLE AND MULTI-SECTION HOMES



www.modulinemedicinehat.com



Scan on your Mobile Device to see all of our homes online.



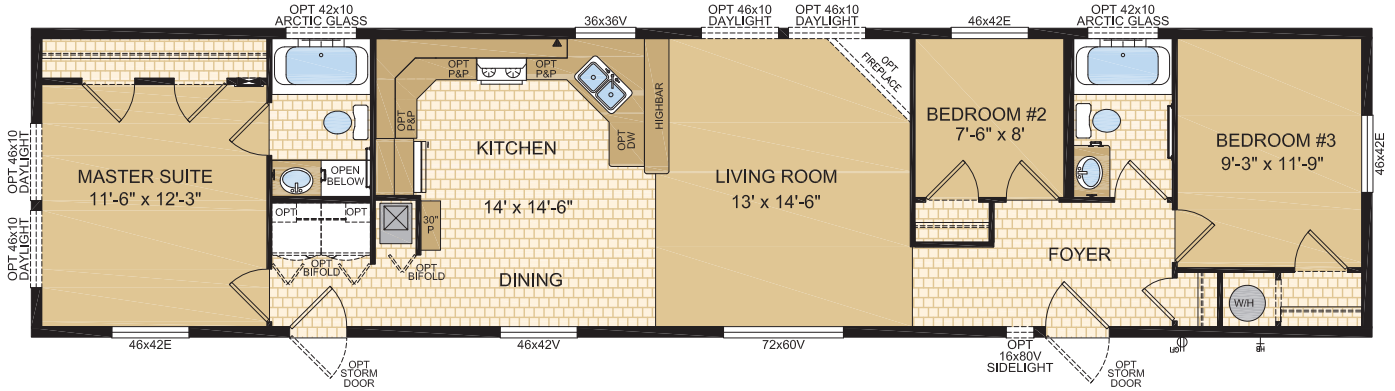
LEGACY

HOME SERIES

BRUGES

MODEL 16200

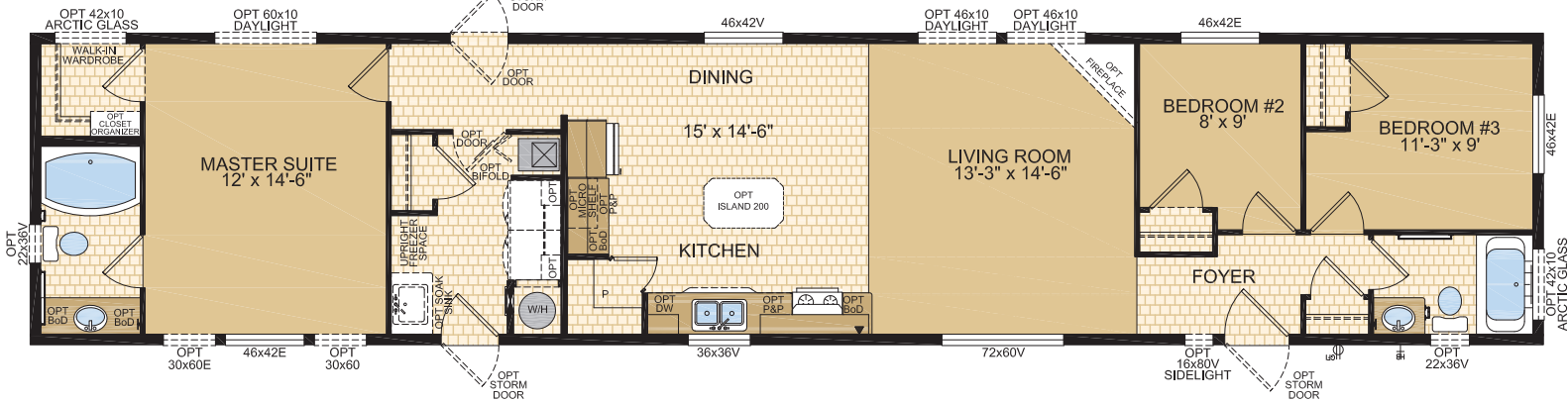
3 Beds | 2 Baths
16' x 68' ~ 1,088 sq. ft.



ROTHENBURG

MODEL 16201

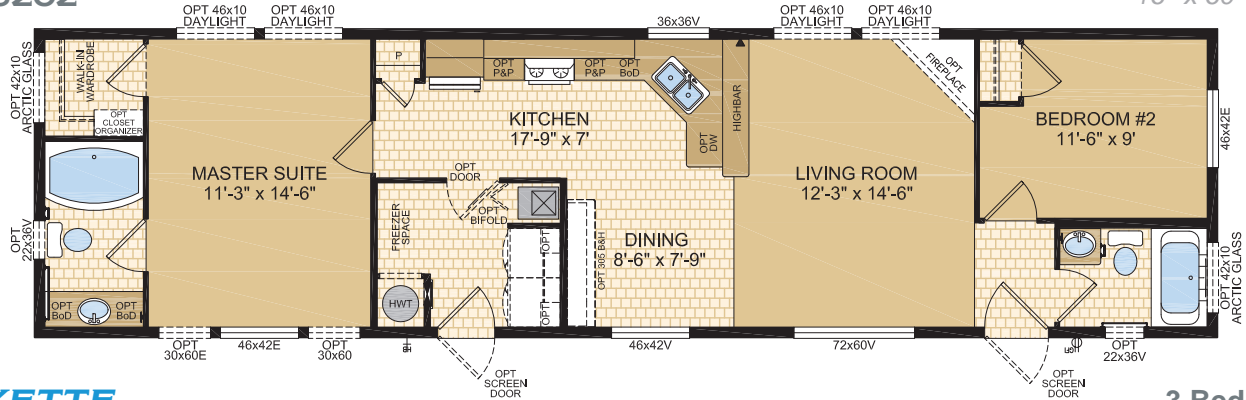
3 Beds | 2 Baths
16' x 76' ~ 1,216 sq. ft.



ST. MICHEL

MODEL 16202

2 Beds | 2 Baths
16' x 60' ~ 960 sq. ft.

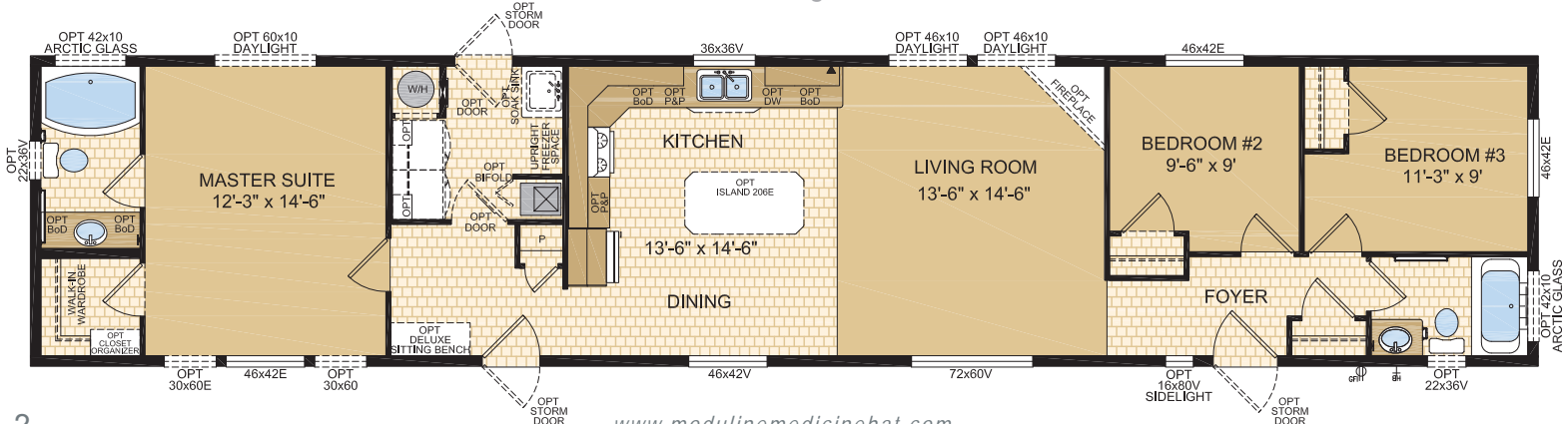


LAFAYETTE

MODEL 16203

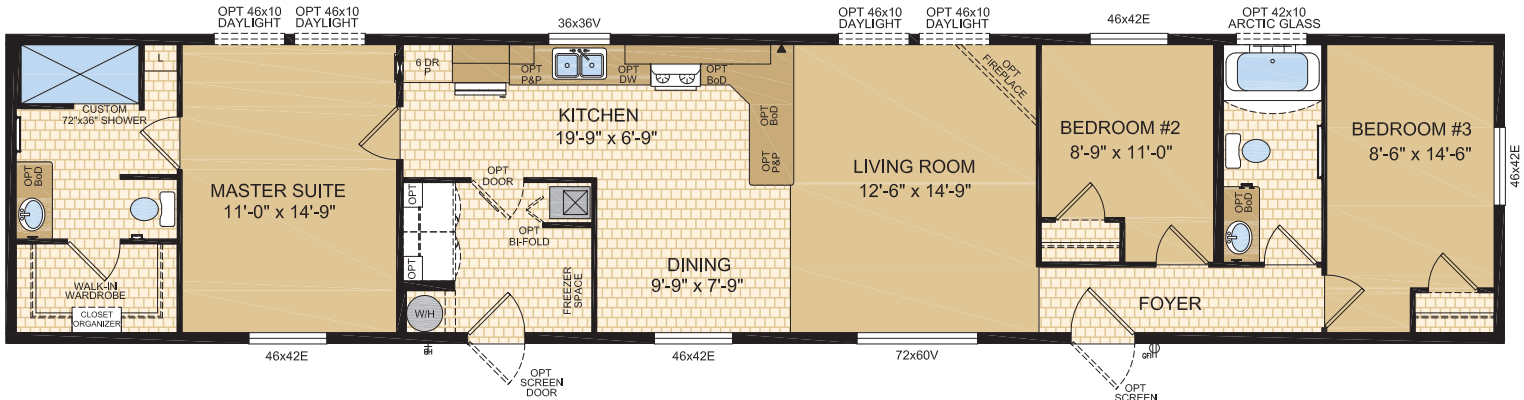
3 Beds | 2 Baths
16' x 76' ~ 1,216 sq. ft.

Note: Artist Rendering on front cover



LUNA
MODEL 16205

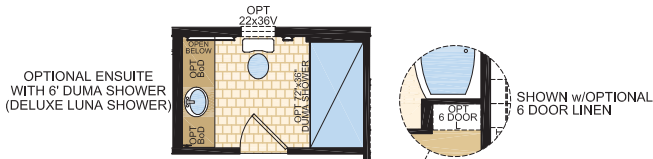
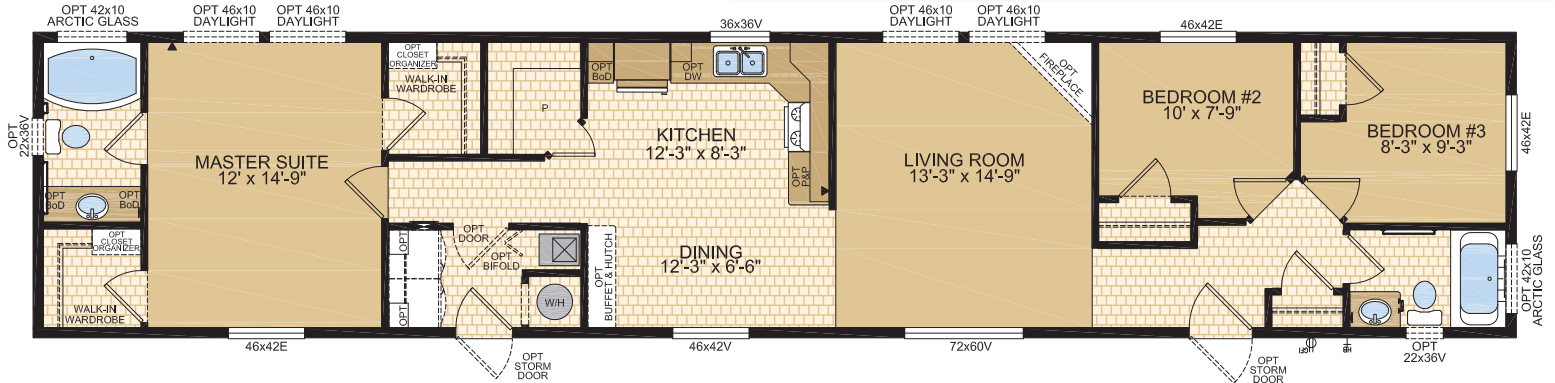
3 Beds | 2 Baths
16' x 76' ~ 1,216 sq. ft.



AUSTIN
MODEL 16206
3 Beds | 2 Baths
16' x 76' ~ 1,216 sq. ft.

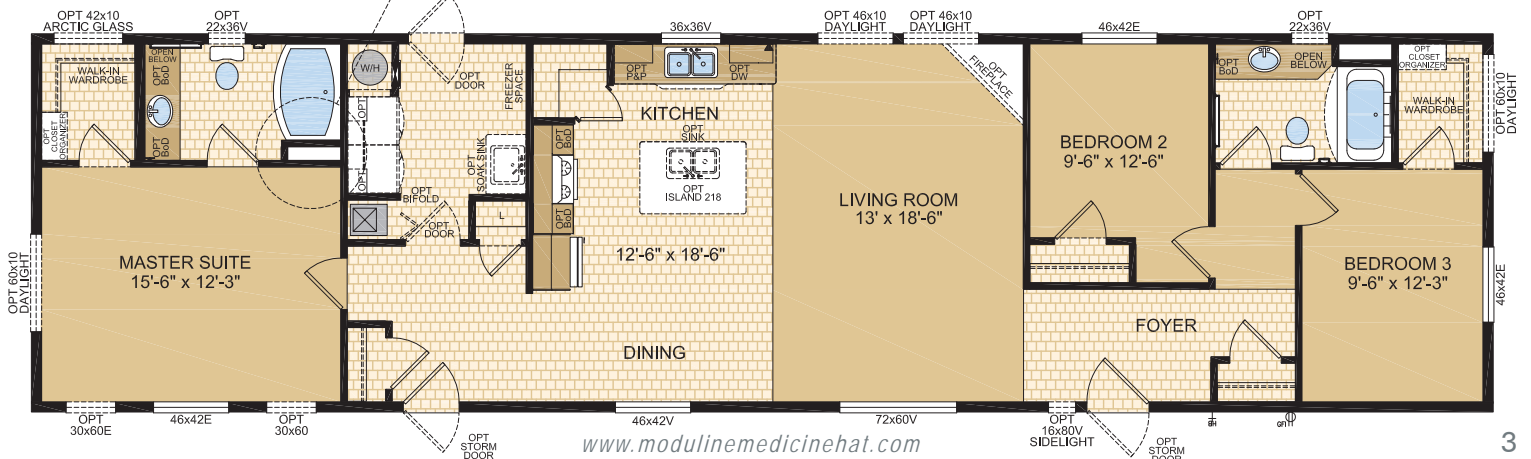


Options shown in image: Alys Front Door, 9-Lite Rear Door, Painted Smartboard Window Trim, Board & Batten, Bath Window, Artic Glass Window, 46x60v Windows ILO 46x42 in Master Suite Dining & Bedroom #3, Dormer.



ST. PAUL
MODEL 20201

3 Beds | 2 Baths
20' x 76' ~ 1,520 sq. ft.





LEGACY

HOME SERIES

HALLSTAT
MODEL 20202

4 Beds | 2 Baths
20' x 76' ~ 1,520 sq. ft.

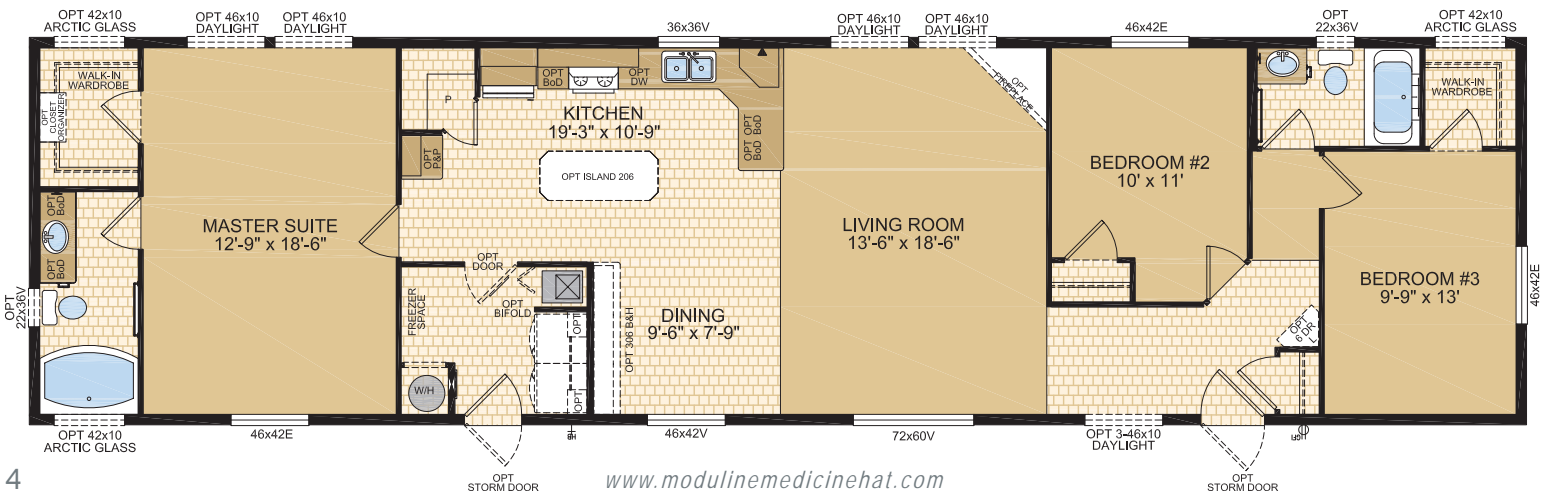


BORDEN
MODEL 20204

3 Beds | 2 Baths
20' x 76' ~ 1,520 sq. ft.

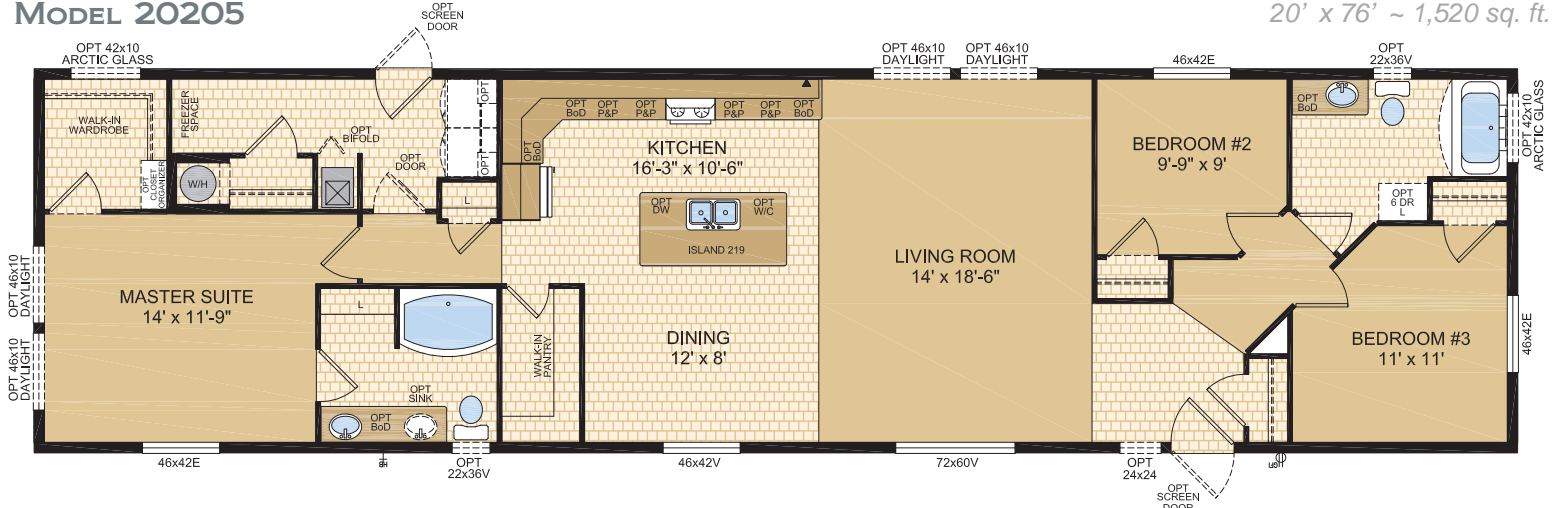


Options shown in image: 9-Lite Front & Rear Doors, Painted Smartboard Corner and Window Trim, Stacked Stone, Artic Glass Window, 3-46x10 Daylight Windows, Dormer.



HAWKESBURY
MODEL 20205

3 Beds | 2 Baths
20' x 76' ~ 1,520 sq. ft.

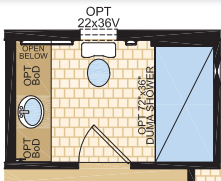


BELLBROOK
MODEL 20206

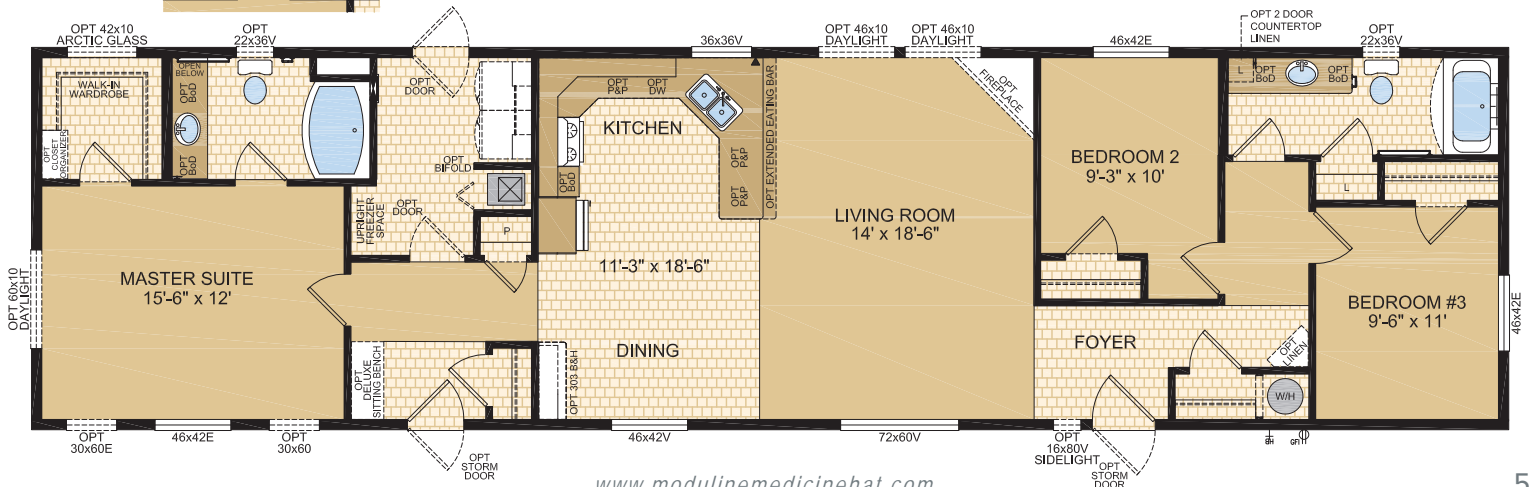
3 Beds | 2 Baths
20' x 76' ~ 1,520 sq. ft.



Options shown in image: 9-Lite Front & Rear Doors, Painted Smartboard Corner and Window Trim, 2-30x60 Windows in Master Suite, Dormer, Sidelight at Front Door.



OPT LAYOUT



16' & 20' WIDES STANDARD FEATURES & SPECIFICATIONS

General Construction	
Building Code	A-277 Zone 7A*
Snow Load	Live load 42 psf (2.01 kPa) Ground snow load 72.6 psf (3.48 kPa)
Insulation R Values	Floors R-48, Walls R-22 & Ceiling R-40 (min) Meets zone 8 of the 9.36 Energy Code**
Floor	2"x10" floor joists @ 16" o.c. (16' wides) 2"x12" floor joists @ 16" o.c. (20' wides) Heavy tubular steel frame w/detachable hitch
Decking	19/32" T & G OSB floor decking; glued and screwed
Roof	4/12 roof pitch; engineered roof trusses 7/16" roof sheathing Architectural asphalt shingles - limited lifetime warranty
Eaves	12" sides, 18" front vented eaves (does not include rear)
Siding	Maintenance free vinyl lap siding & corners
Weather Protection	White house wrap
Fascia	Coloured metal
Soffit	White vinyl
Building Envelope	Meets 0.20 L/M2S
Exterior Walls	2"x6", 24" o.c. 3/8" OSB sheathing inside & outside of wall
Interior Walls	2"x4" Interior walls 8' ceilings Cathedral ceiling in living, dining, and kitchen
Ceiling	Textured (primed) gyproc ceiling
Windows	1.36 U-value, dual low E argon filled PVC (meets zone 8 of the 9.36 Energy Code)* c/w vinyl sills, screens and security locks
Living Room	72x60v - Sliding
Dining Room	46x42v - Sliding
Bedrooms	46x42v - Sliding
Kitchen (most models)	36x36v - Sliding
Exterior Doors	36" Decorative insulated entry door - Front 32" Decorative insulated entry door - Rear Includes deadbolt & peephole Round door knob - satin nickel Coach lights at all exterior entrances

Spacious Baths	
Tile	Single row w/metal tile edging
Fixtures	One-piece quality fiberglass oval tub & shower unit - ensuite (excl model 16200) One-piece quality fiberglass tub & shower unit - main bath (& ensuite of model 16200) White oval drop in sink 6' Duma wall walk-in shower w/ glass divider and shower tower (model 16205 only) Single flush toilet
Faucets	Dual handle vanity faucets Single lever faucet on tub/shower unit
Hardware	Curved Shower rods in all tubs Towel bar, ring & paper holder - chrome
Vanity	Expansive vanity mirrors
Countertop Heights:	32" in all bathrooms
Electrical	GFI receptacle Power bath fan(s)
Lighting	Hampton light fixture

Tasteful Interiors	
Flooring	Carpet in living room, all bedrooms & hallways in 20' wides (lino in hallways of 16' wides) Quality linoleum flooring all other areas
Blinds	Cellular cordless blinds (excl bathrooms)
Interior Doors	Pre-finished interior doors in Crystal white colour
Interior Door Handles	Round door knob - satin nickel Privacy locks on bathroom doors excluding ensuites. If bathroom is an ensuite, bdrm door will have privacy set.
Closets	Solid white shelving
Wall Finish	Decorative 1/2" vinyl on gyproc (VOG) Battens on joints
Moulding ¹	Vinyl wrapped Colour - Décor Specific #3007 (2-1/4")
Windows & Doors	Flat #161 (1-3/16"); Vault #3000 (1-5/8")
Ceiling	Baseboards #215 (1-1/2")
Electrical	Decora switches & recepts - white
Lighting	Ceiling mount in all bdrms, halls & utility room Decorative chandelier in dining room - chrome

Bright, Beautiful Kitchens	
Tile	Single row w/metal tile edging
Range	Deluxe 30" electric - white Range hood w/light - white
Fridge	19 cu.ft., 2-door, frost free - white Opening: 34" x 69-3/4"
Sink	Double stainless steel sink Dual handle faucet - chrome
Spacious Pantry	Selected models
Large Island	Model 20205 only
Cabinets	Doweled, full modular cabinetry Cabinet crown moulding Five distinctive colors of cabinet doors
Countertop	Arborite
Lighting	Ceiling mount

Utility Services	
Electrical Service	100 amp
Heating	High efficiency (95+AFUE) single stage furnace Natural gas / propane Programmable thermostat
Water Heater	33 Imp. (40 US) gallon electric 3m Insulated water lines on hot & cold
Washer / Dryer	Plumbed, wired & vented for washer/dryer Solid shelf above washer/dryer location
Electrical - Other	Primary exhaust fan w/dehumidistat & switch Smoke detectors w/battery backup in bdrms CO/Smoke Detector(s) w/battery backup locations as per code Arc fault protection as required by code GFI protected receptacle for heat tape Dedicated receptacle in "Freezer Area" Exterior GFI electrical outlet by front door Blank communication outlet in kitchen
Plumbing - Other	Exterior frost free water tap



LEGACY

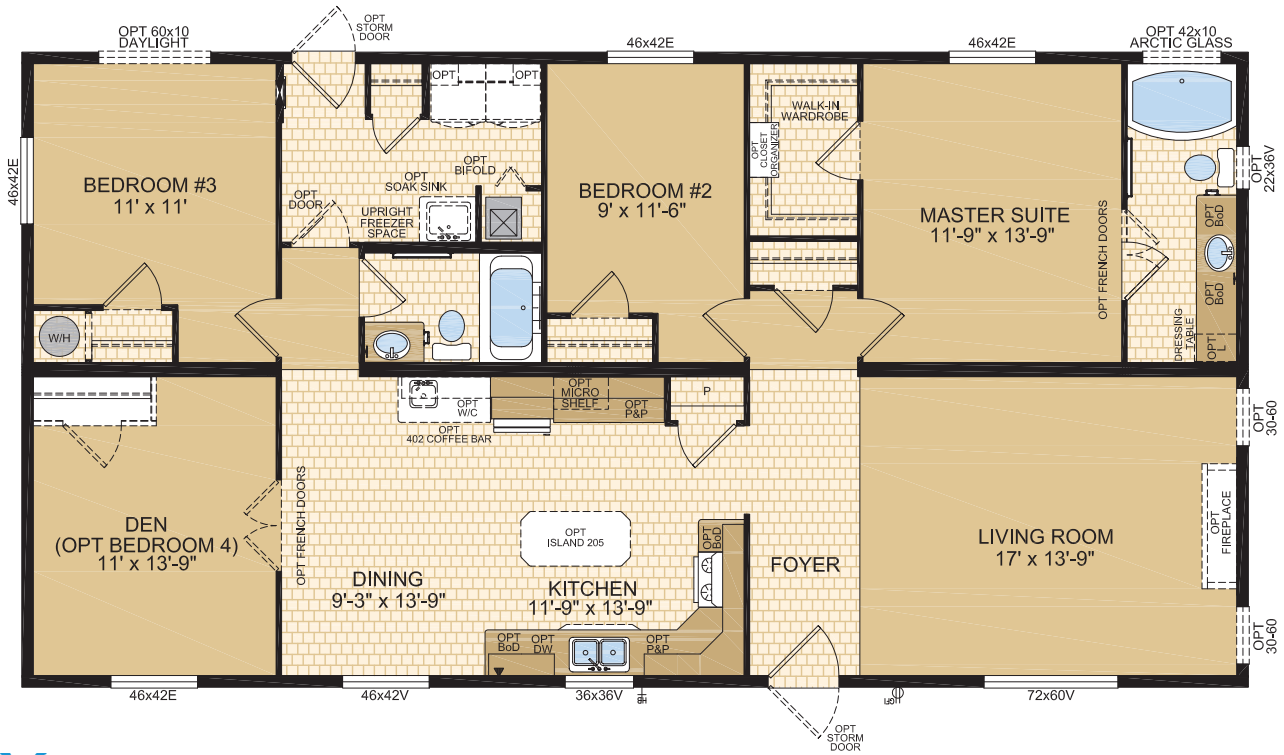
HOME SERIES

ROMANIA
MODEL 30400

3 Beds | 2 Baths | Den
29' x 56' ~ 1,624 sq. ft.

Note: Artist Rendering on front cover

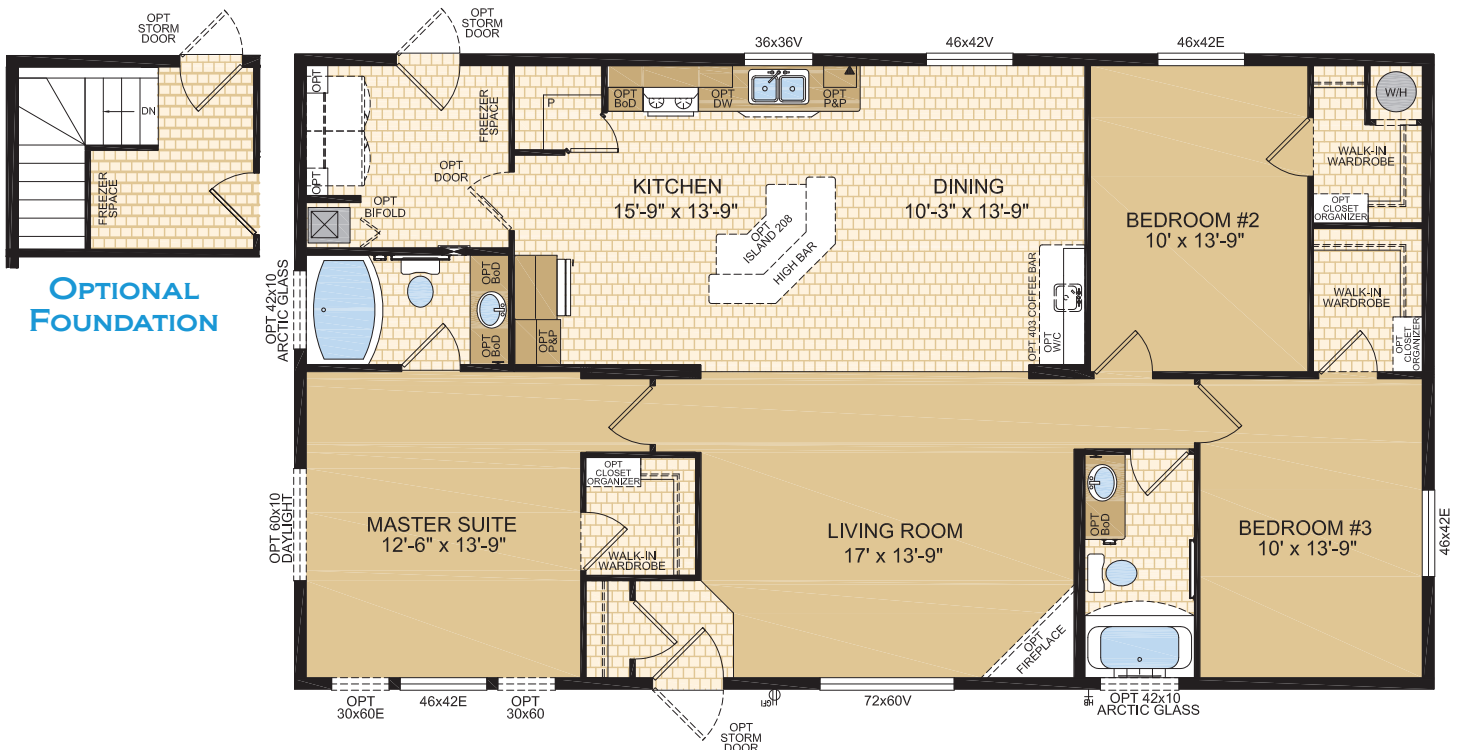
OPTIONAL
FOUNDATION



SAN MARINO
MODEL 30401

3 Beds | 2 Baths
29' x 52' ~ 1,508 sq. ft.

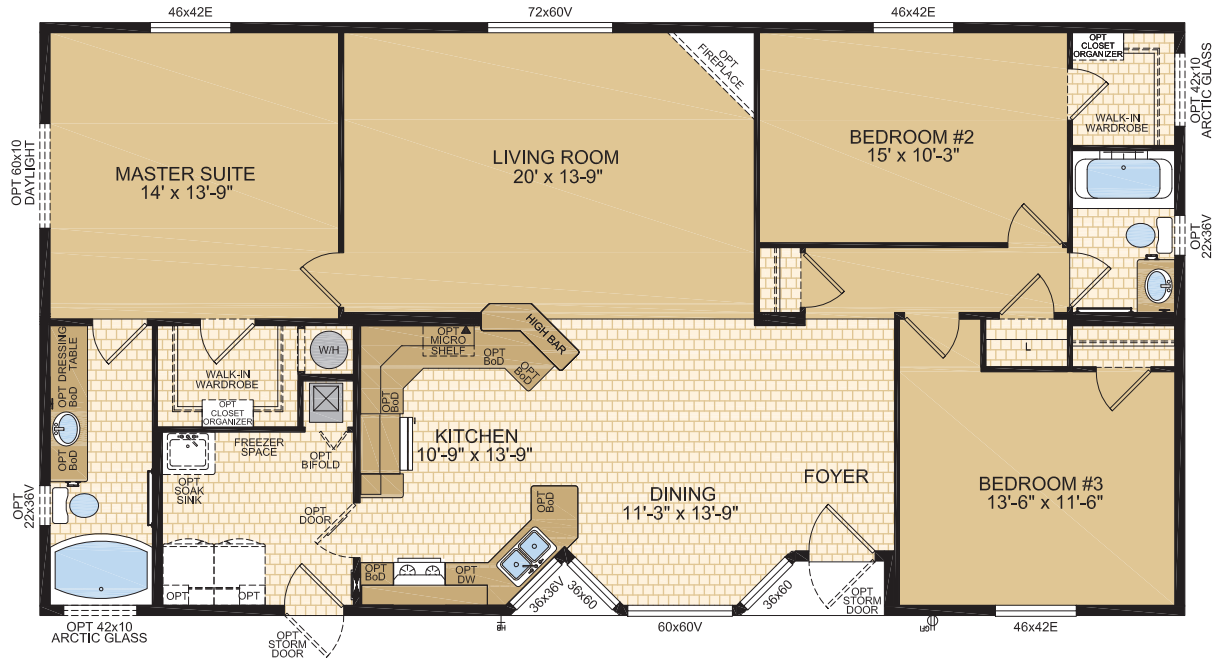
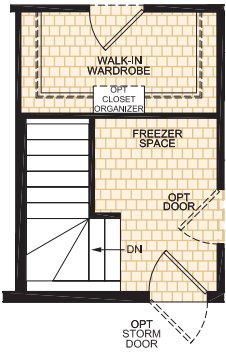
OPTIONAL
FOUNDATION



BAMBERG
MODEL 30402

3 Beds | 2 Baths
29' x 56' ~ 1,624 sq. ft.

OPTIONAL FOUNDATION

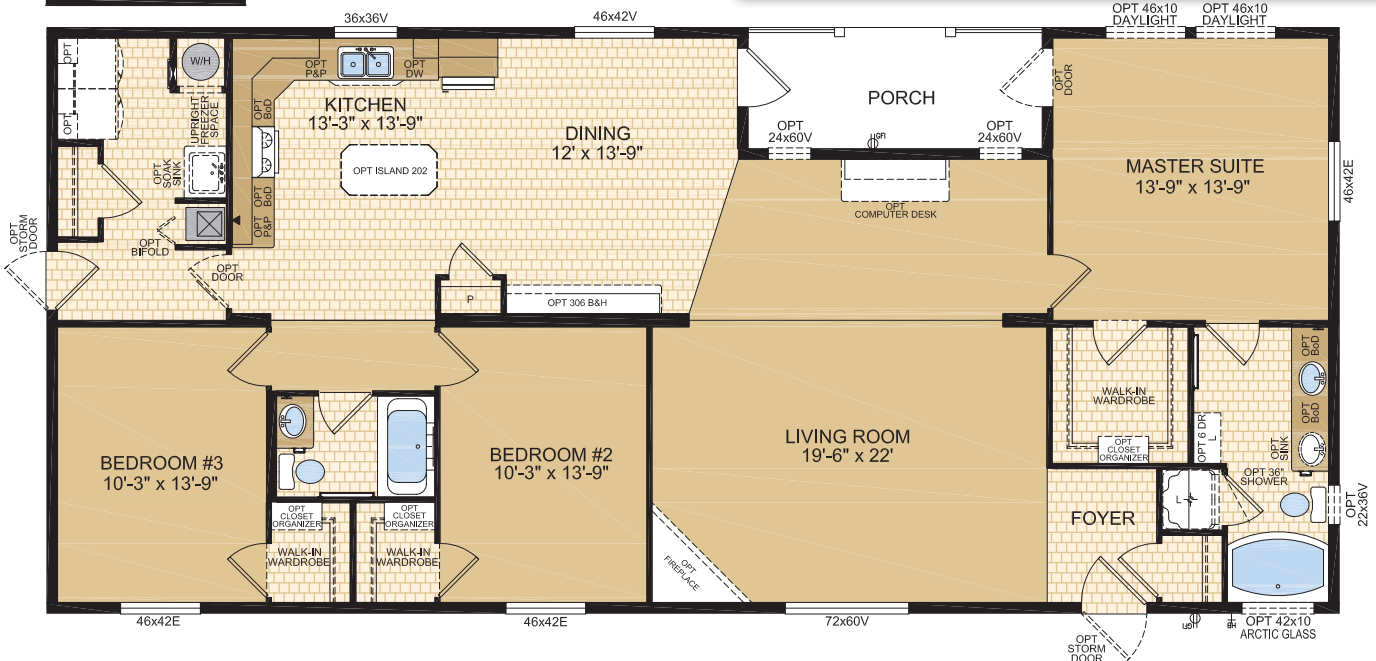
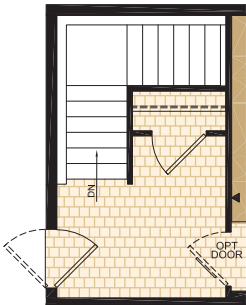


MONSANTO
MODEL 30403

3 Beds | 2 Baths | Porch
29' x 64' ~ 1,856 sq. ft.

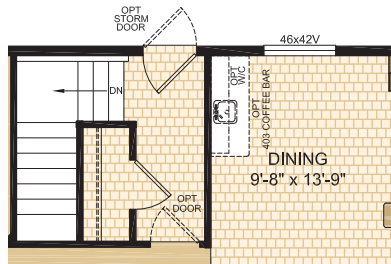
Options shown in image: 9-Lite Front Door, Arctic Glass Window, Bath Window, Shakes, Tudor Columns, Painted Smartboard Window Trim.

OPTIONAL FOUNDATION

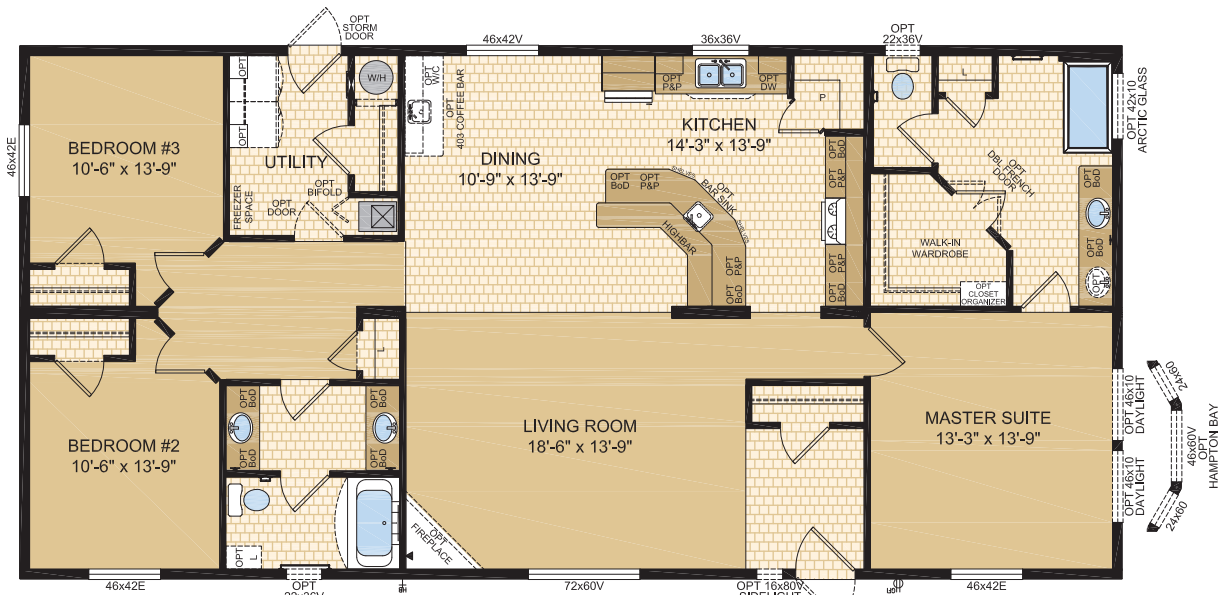




OPTIONAL FOUNDATION

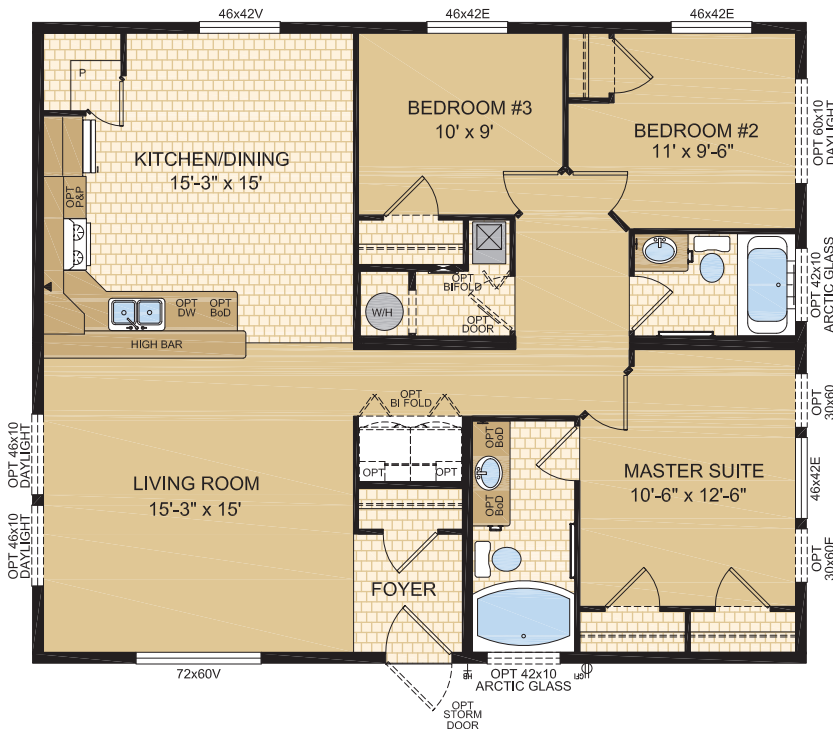


Options shown in image: 9-Lite Front Door, Painted Smartboard Window Trim Corners and Door Trim, Valleyview Bay, Bath Window, 2-24x60 Windows in Living Room, Sidelight at Front Door, 2-30x60v Windows ILO 46x42 in Master Suite, Daylight Windows, Caspian Columns.

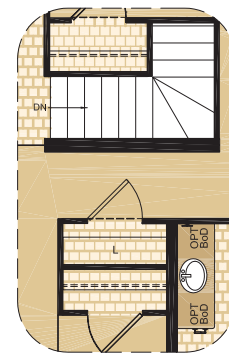




Options shown in image: 9-Lite Front Door, Painted Smartboard Corner Trim, Hampton Bay, Arctic Glass Window.



OPTIONAL FOUNDATION



MULTI SECTION STANDARD FEATURES & SPECIFICATIONS

General Construction	
Building Code	A-277 Zone 7A*
Snow Load	Live load 42 psf (2.01 kPa) Ground snow load 72.6 psf (3.48 kPa)
Insulation R Values	Floors R-40, Walls R-22 & Ceiling R-46 (min) Meets zone 8 of the 9.36 Energy Code**
Floor	2"x10" floor joists @ 16" o.c. Heavy tubular steel frame w/detachable hitch
Decking	19/32" T & G OSB floor decking; glued and screwed
Roof	4/12 roof pitch; hinged roof trusses <i>(Fixed roof available with truss floor option on 30' wides or less, may require overheight permit)</i> 7/16" roof sheathing Architectural asphalt shingles - limited lifetime warranty
Eaves	18" vented eaves all 4 sides
Siding	Maintenance free vinyl lap siding & corners
Weather Protection	White house wrap
Fascia	Coloured metal
Soffit	White vinyl
Building Envelope	Meets 0.20 L/M2S
Exterior Walls	2"x6", 24" o.c. 3/8" OSB sheathing inside & outside of wall Shipping wall included on T/S models
Interior Walls	2"x4" Interior walls 8' ceilings Cathedral ceiling in living, dining, and kitchen
Ceiling	Textured (primed) gyproc ceiling
Windows	1.36 U-value, dual low E argon filled PVC (meets zone 8 of the 9.36 Energy Code)* c/w vinyl sills, screens and security locks
Living Room	72x60v - Sliding
Dining Room	46x42v - Sliding
Bedrooms	46x42v - Sliding
Kitchen (most models)	36x36v - Sliding
Family Room (if app.)	46x42v - Sliding
Exterior Doors	36" Decorative insulated entry door - Front 32" Decorative insulated entry door - Rear Includes deadbolt & peephole Round door knob - satin nickel Coach lights at all exterior entrances Pot light ILO coach light at porch entrances & recessed entrances

Spacious Baths	
Tile	Single row
Fixtures	One-piece quality fiberglass oval tub & shower unit - ensuite One-piece quality fiberglass tub & shower unit - main bath 36" shower stall w/sliding glass doors (model 30404 only) White oval drop in sink Single flush toilet
Faucets	Dual handle vanity faucets Single lever faucet on tub/shower unit
Hardware	Curved Shower rods in all tubs Towel bar, ring & paper holder - chrome
Vanity Countertop Heights:	Expansive vanity mirrors 32" in all bathrooms
Electrical	GFI receptacle Power bath fan(s)
Lighting	Hampton light fixture

Tasteful Interiors	
Flooring	Carpet in living room, all bedrooms and hallways Quality linoleum flooring all other areas
Blinds	Cellular cordless blinds (excl bathrooms)
Interior Doors	Pre-finished interior doors in Crystal White colour
Interior Door Handles	Round door knob - satin nickel Privacy locks on bathroom doors excluding ensuites. If bathroom is an ensuite, bdrm door will have privacy set.
Closets	Solid white shelving
Wall Finish	Decorative 1/2" vinyl on gyproc (VOG) Battens on joints
Moulding ¹	Vinyl wrapped Colour - Décor Specific
Windows & Doors	#3007 (2-1/4")
Ceiling	Flat #161 (1-3/16"); Vault #3000 (1-5/8")
Baseboards	#215 (1-1/2")
Electrical	Decora switches & recepts - white
Lighting	Ceiling mount in all bdrms, halls & utility room Decorative chandelier in dining room - chrome

Bright, Beautiful Kitchens	
Tile	Single row
Range	30" electric - white Range hood w/light - white
Fridge	19 cu.ft., 2-door, frost free - white Opening: 34" x 69-3/4"
Sink	Double stainless steel sink Dual handle faucet - chrome
Spacious Pantry	Selected models
Cabinets	Doweled, full modular cabinetry Cabinet crown moulding Five distinctive colors of cabinet doors
Countertop	Arborite
Lighting	Ceiling mount

Utility Services	
Electrical Service	100 amp
Heating	High efficiency (95+AFUE) single stage furnace Natural gas / propane Programmable thermostat
Water Heater	39 Imp. (45 US) gallon electric 3m Insulated water lines on hot & cold
Washer / Dryer	Plumbed, wired & vented for washer/dryer Solid shelf above washer/dryer location
Electrical - Other	Primary exhaust fan w/dehumidistat & switch Smoke detectors w/battery backup in bdrms CO/Smoke Detector(s) w/battery backup locations as per code Arc fault protection as required by code GFI protected receptacle for heat tape Dedicated receptacle in "Freezer Area" Exterior GFI electrical outlet by front door Blank communication outlet in kitchen
Plumbing - Other	Exterior frost free water tap



www.modulinemedicinehat.com

Exterior Wall Construction

Best Standard in the Housing Industry!

2"X6" EXTERIOR WALLS CONSTRUCTED @ 24" O/C TO MAXIMIZE ENERGY EFFICIENCY

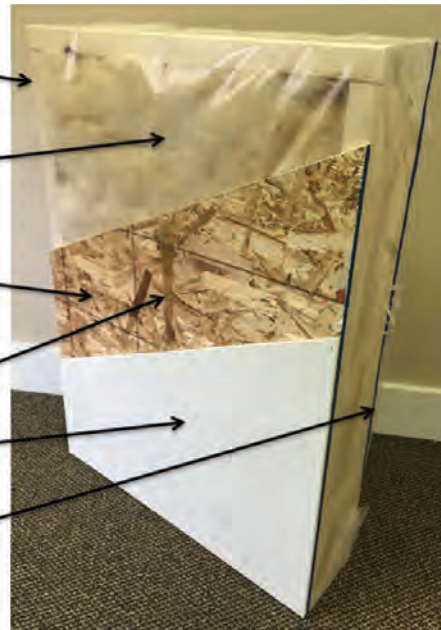
R20 INSULATION WITH 6 MIL POLY (R22 ZONES 6 TO 8 UNDER 9.36 ENERGY CODE)

3/8" STRUCTURAL INTERIOR OSB FOR THE STRONGEST WALL IN THE INDUSTRY

ALPHA GLUE TO MAXIMIZE STRENGTH AND MAINTAIN HOMES INTEGRITY

VINYL COVERED GYPROC FASTENED TO OSB USING ALPHA GLUE SYSTEM

3/8" STRUCTURAL EXTERIOR OSB FASTENED TO STUDS WITH SHEATHING STAPLES



"We surpass the competition!"



1421 Brier Park Crescent, Medicine Hat, Alberta T1C 1T8 Phone: (403) 527-1555 Fax: (403) 528-4486

In a continued effort to meet the challenges of product improvement, we reserve the right to modify plans, specifications and features without prior notice. Some homes may show optional items which are not standard. Please consult your dealer representative for details. Square footage and room sizes are approximate.