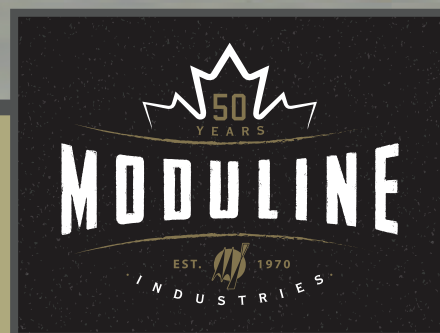


22' WIDE HOMES



Scan on your Mobile Device
to see all of our homes online.



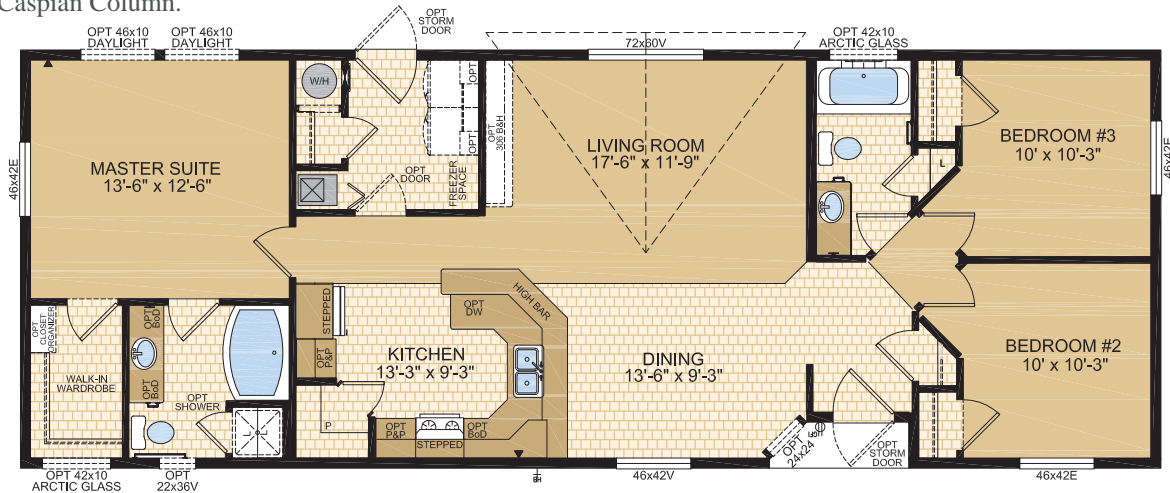
www.modulinemedicinehat.com

MEADOWLAKE Model 22272

3 Beds | 2 Baths
22' x 60' ~ 1,320 sq. ft.

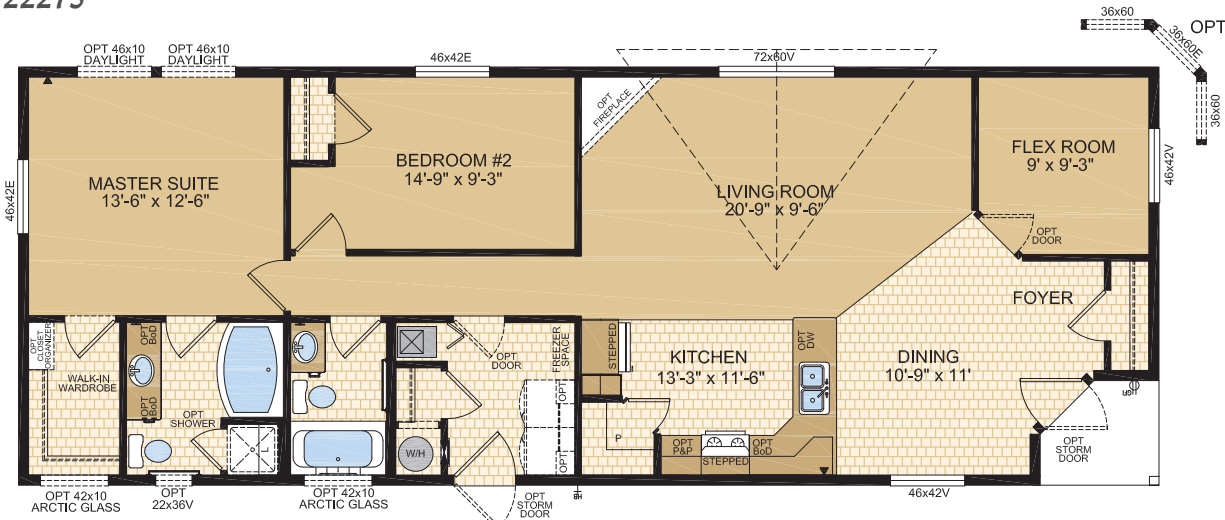


Options shown in image: Alys Front Door, Painted Smartboard Window Trim & Corners, 16' Dormer with Eyebrow, Board & Batten, Bath Window, Arctic Glass Window, 46x60 Windows ILO 46x42 Windows in Bedroom #2 Bedroom #3 & Dining Room Windows, Additional Caspian Column.



MEADOWPARK Model 22273

2 Beds | 2 Baths | Flex Room
22' x 60' ~ 1,320 sq. ft.

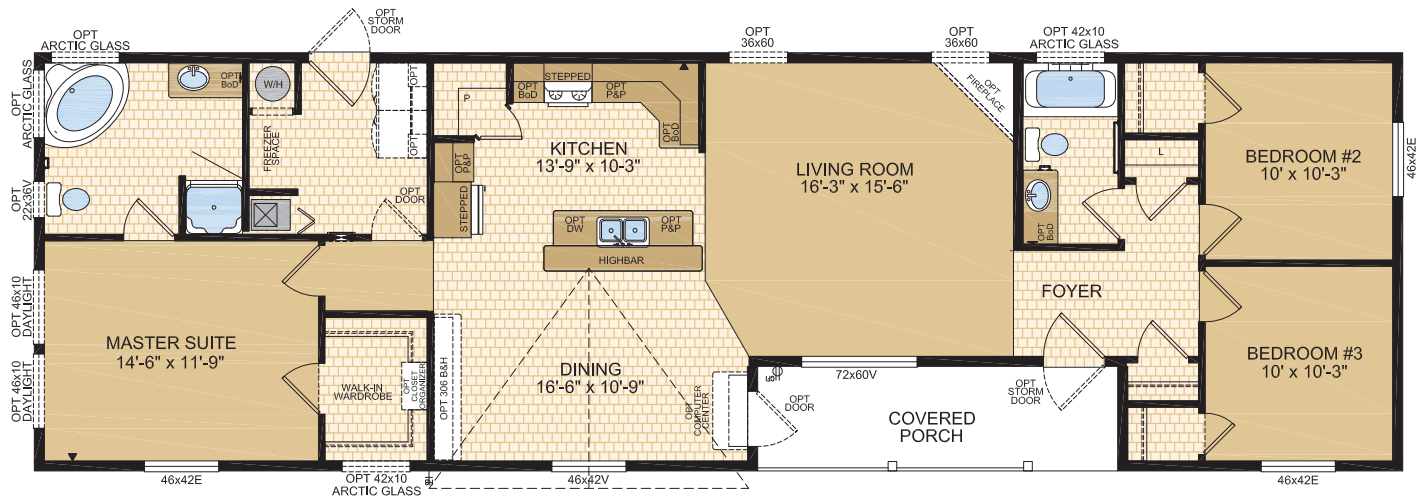


ALLEGIANCE Model 22491

3 Beds | 2 Baths | Porch
22' x 72' ~ 1,584 sq. ft.

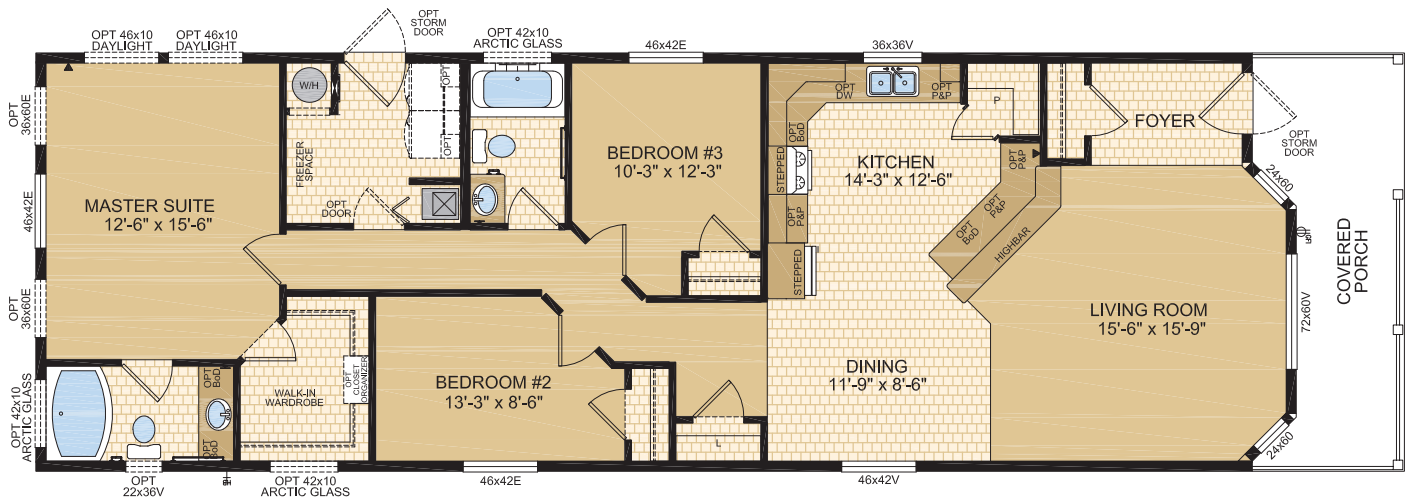


Options shown in image: Alys Front Door, Painted Smartboard Window Trim & Corners, Board & Batten, Stacked Stone, Additional Dormers, Tudor Columns, Artic Glass Window, 46x68v Transom Windows ILO 46x42v Windows in Bedroom #3 Dining & Master Suite.



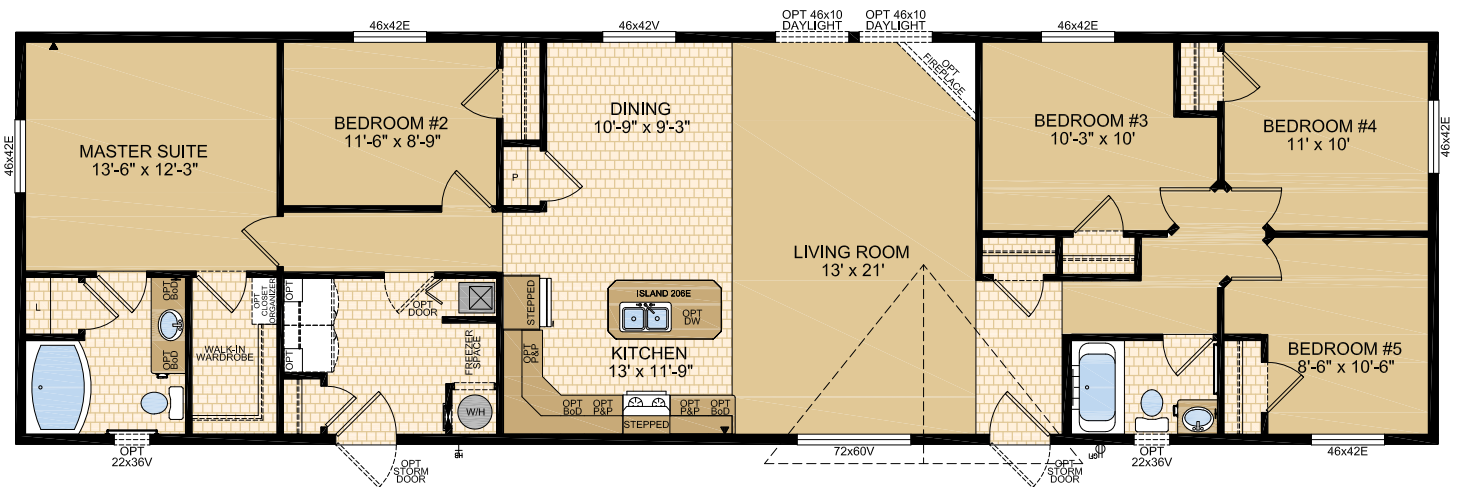
HERITAGE Model 22492

3 Beds | 2 Baths | Porch
22' x 72' ~ 1,584 sq. ft.



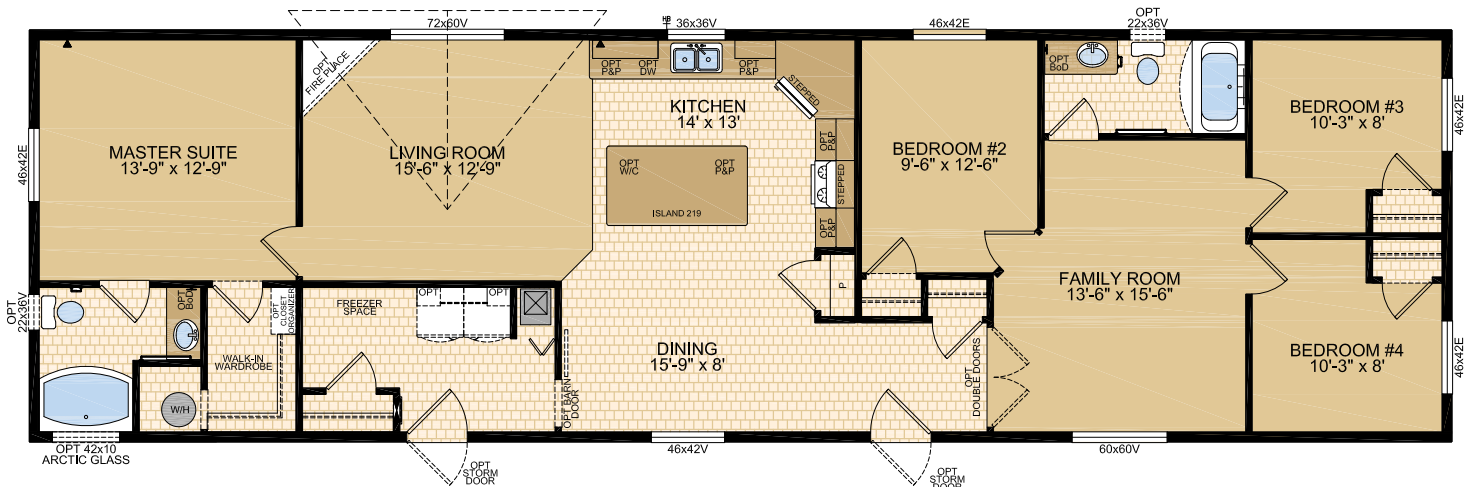
WINCHESTER Model 22555

5 Beds | 2 Baths
22' x 76' ~ 1,672 sq. ft.



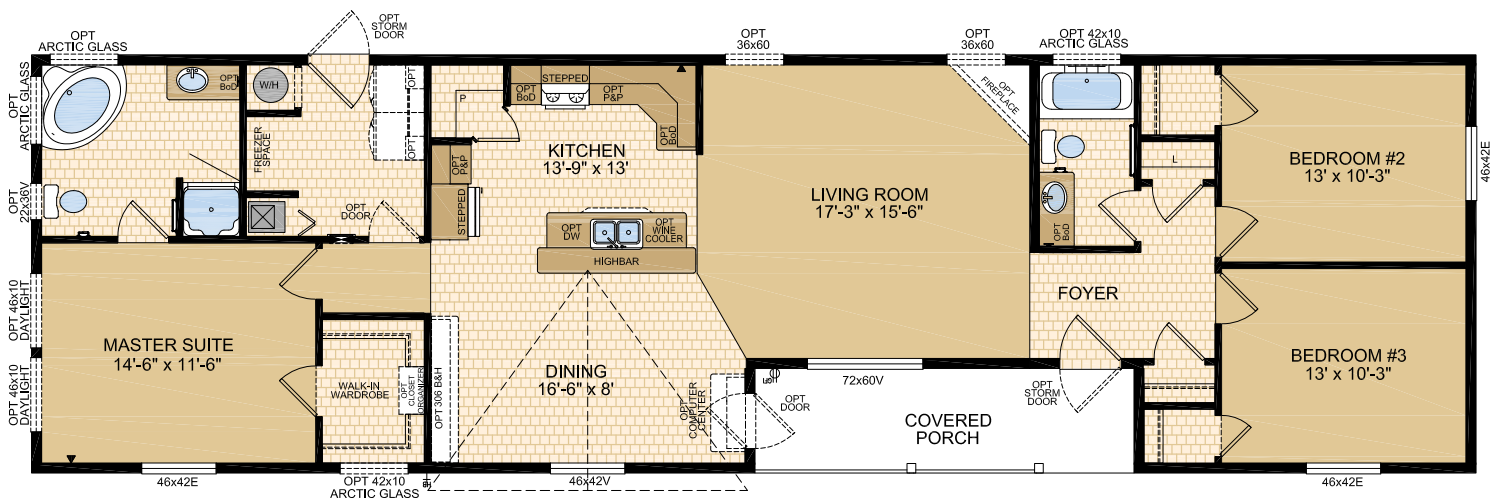
KENSINGTON Model 22556

4 Beds | 2 Baths | Family Room
22' x 76' ~ 1,672 sq. ft.



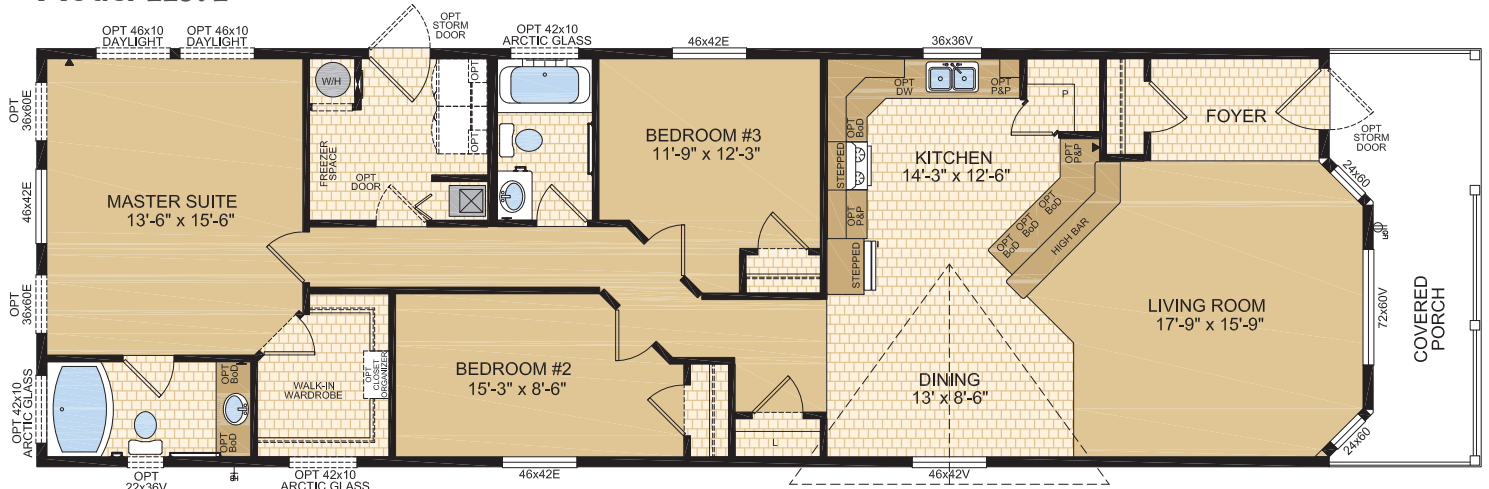
CHADRON Model 22591

3 Beds | 2 Baths | Porch
22' x 76' ~ 1,672 sq. ft.



ALLENTOWN Model 22592

3 Beds | 2 Baths | Porch
22' x 76' ~ 1,672 sq. ft.

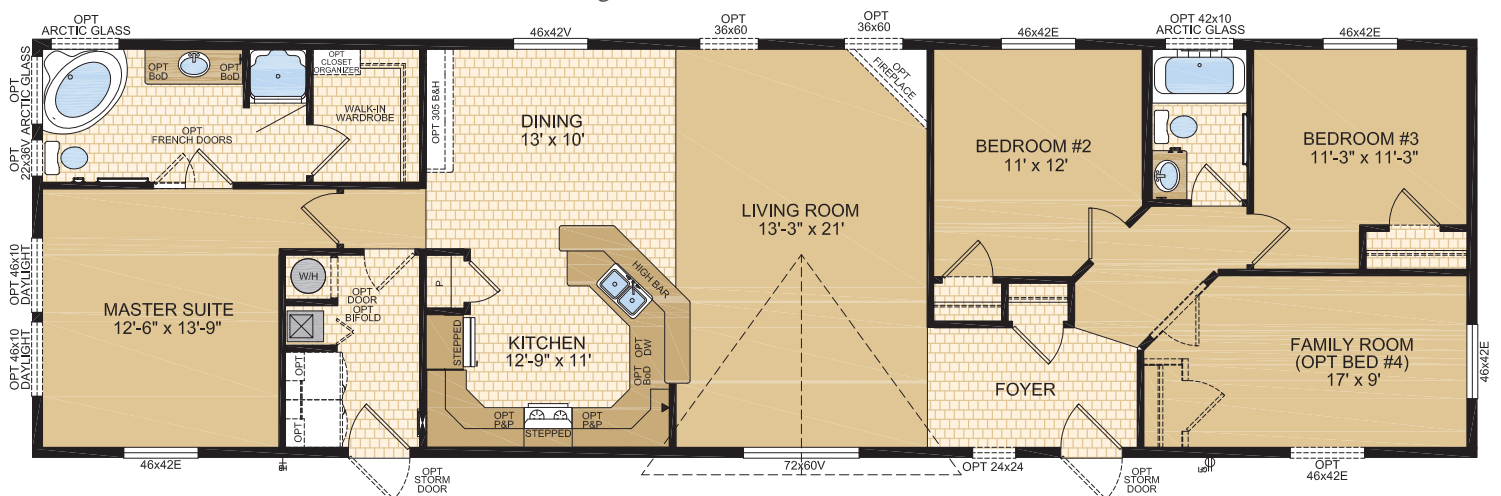


TRENTON Model 22594

3 Beds | 2 Baths | Family Room
22' x 76' ~ 1,672 sq. ft.

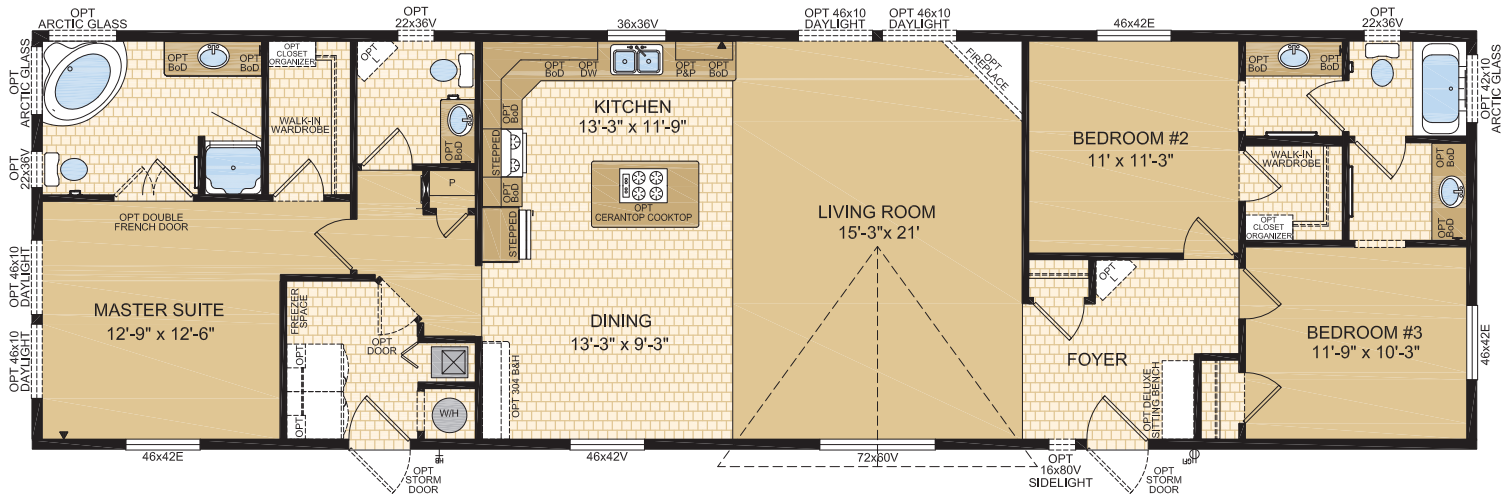


Options shown in image: Alys Front Door, 9-Lite Rear Door, Painted Smartboard Window Trim & Corner, Eyebrow Dormer, Caspian Columns on Hitch End, Painted Cement Board Siding.



BRADFORD Model 22597

3 Beds | 2.5 Baths
22' x 76' ~ 1,672 sq. ft.

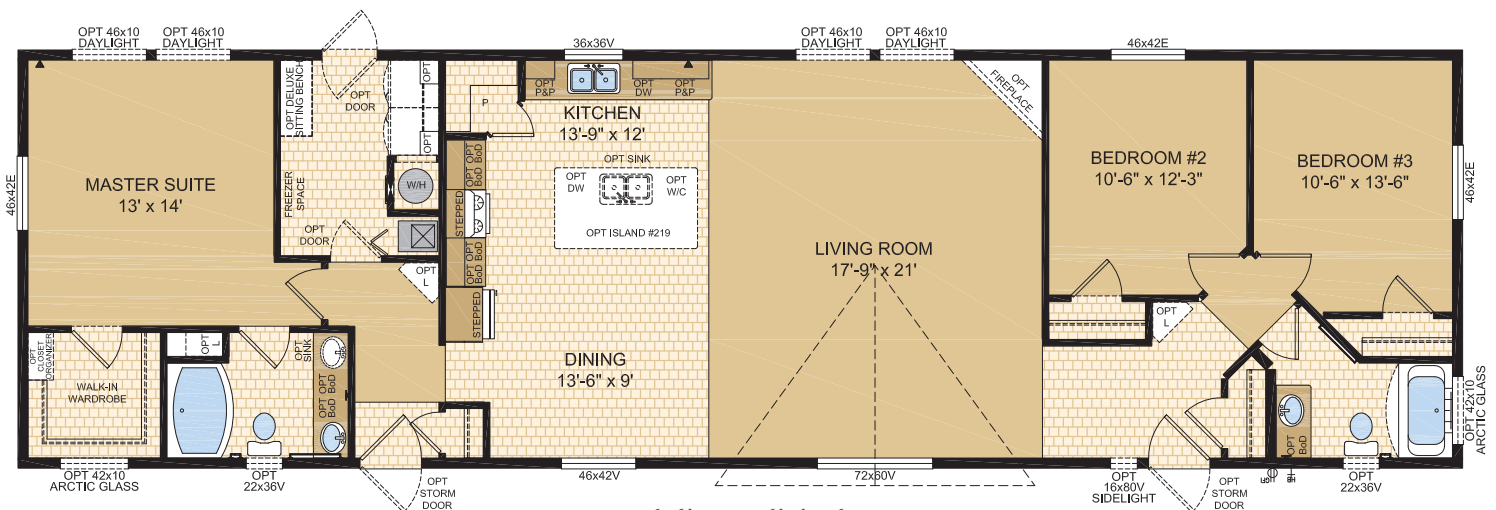


BANBURY Model 22600

3 Beds | 2 Baths
22' x 76' ~ 1,672 sq. ft.



Options shown in image: 9-Lite Exterior Doors, Painted Smartboard Window Trim, Eyebrow Dormer, Artic Glass Windows, 16x80 Sidelight Window, Board & Batten, Tudor Columns, Bath Windows, 46x68v Transom Windows ILO 72x60v & 46x42v Windows.



STANDARD FEATURES & SPECIFICATIONS

General Construction	
Building Code	A-277 Zone 7A*
Snow Load	Live load 42 psf (2.01 kPa) Ground snow load 72.6 psf (3.48 kPa)
Insulation R Values	Floors R-48, Walls R-22 & Ceiling R-40 (min) Meets zone 8 of the 9.36 Energy Code**
Floor	2"x10" floor joists @ 16" o.c. - 20' wides Open web truss @ 16" o.c. - 22' wides Heavy tubular steel frame w/detachable hitch
Decking	19/32" T & G OSB floor decking; glued and screwed
Roof	4/12 roof pitch; engineered roof trusses 7/16" roof sheathing Architectural asphalt shingles - limited lifetime warranty
Eaves	12" sides, 18" front & rear vented eaves
Siding	Maintenance free vinyl lap siding & corners
Fascia	Coloured metal
Soffit	White vinyl
Building Envelope	Meets 0.20 L/M2S
Exterior Walls	2"x6", 24" o.c. 3/8" OSB sheathing inside & outside of wall Shipping wall included on T/S models
Interior Walls	2"x4" Interior walls 8' ceilings Cathedral ceiling in living, dining, and kitchen
Ceiling	Textured (primed) gyproc ceiling
Windows	1.36 U-value, dual low E argon filled PVC (meets zone 8 of the 9.36 Energy Code)* c/w vinyl sills, screens and security locks Living Room 2 - 46x68v transom - Sliding Dining Room 46x68v transom - Sliding Bdrms on CS & HE 46x68v transom - Sliding Bdrms on RS or rear 46x42v - Sliding kitchen (most models) 36x36v - Sliding
Exterior Doors	36" Decorative insulated entry doors - front & rear Includes deadbolt & peephole Single lever door handle - satin nickel Coach lights at all exterior entrances Pot light ILO coach light at porch entrances
Exterior Decorative Features	5/12 Pitch dormer over living room windows Eyebrow dormer on hitch end and curbside Tudor Columns Cement Board & Shake Treatments Wood trim on hitch end & curbside windows

Spacious Baths	
Tile	Single row w/metal tile edging
Fixtures	Low wall oval tub - ensuite 36" shower stall - ensuite One-piece quality fiberglass tub & shower unit - main bath White oval drop in sink Double sink in ensuite (most models) Single flush toilet
Faucets	Dual handle vanity faucets Single lever faucet on tub/shower unit
Hardware	Curved Shower rods in all tubs Towel bar, ring & paper holder - chrome
Vanity	Expansive vanity mirrors Framed mirror - ensuite & main
Countertop Heights:	2 Door countertop linen - main (model 22722) 32" in main & secondary bathrooms 36" in ensuite
Mirror	Framed mirror - ensuite & main
Electrical	GFI receptacle Power bath fan(s)
Lighting	Hampton light fixture

Tasteful Interiors	
Flooring	Carpet in living room, family room, den hallways & all bedrooms Quality linoleum flooring all other areas
Blinds	Cellular cordless blinds (excl bathrooms)
Interior Doors	Conmore passage doors - white Louvered bifold at furnace location - white
Interior Door Handles	Single lever in satin nickel Privacy locks on bathroom doors
Closets	Solid white shelving
Wall Finish	Decorative 1/2" vinyl on gyproc (VOG) Battens on joints
Moulding ¹	Vinyl wrapped Colour - décor specific
Windows & Doors	#3007 (2-1/4") Ceiling Flat #3007 (2-1/4"); Vault #451 (2-5/8") Baseboards #3007 (2-1/4")
Electrical	Decora switches & recepts - white
Lighting	Ceiling mount in all bdrms, halls & utility room Decorative chandelier in dining room - chrome Wired for ceiling fan in living room (2 switches)

Bright, Beautiful Kitchens	
Tile	Full height tile w/ special tile accent
Range	Built in oven/microwave - stainless steel Countertop cerantop cooktop Deluxe stainless steel range hood
Fridge	19 cu.ft., 2-door, frost free - stainless steel Opening: 34"x73" 36" Counterdepth 4 Door Fridge w/Icemaker (Model 22723 only) - Stainless steel
Sink	Black anthracite sink - double bowl Indi high rise kitchen faucet - chrome
Pantry	Most models
Cabinets	Doweled, full modular cabinetry Cabinet crown moulding Five distinctive colors of cabinet doors Stepped cabinet over fridge & range Countertop buildout at cooktop location Chef's island
Countertop	Arborite
Lighting	Pot lights (x5)

Utility Services	
Electrical Service	100 amp
Heating	High efficiency (95+AFUE) single stage furnace Natural gas / propane Programmable thermostat
Water Heater	33 Imp. (40 US) gallon natural gas 3m Insulated water lines on hot & cold
Washer / Dryer	Plumbed, wired & vented for side by side Solid shelf above washer/dryer location
Electrical - Other	Primary exhaust fan w/dehumidistat & switch Smoke detectors w/battery backup in bdrms CO/Smoke Detector(s) w/battery backup locations as per code Arc fault protection as required by code GFI protected receptacle for heat tape Dedicated receptacle in "Freezer Area" Exterior GFI electrical outlet by front door Blank communication outlet: kitchen (1), master bdrm (1)
Plumbing - Other	Exterior frost free water tap Shut off valves all fixtures (excl tubs)



www.modulinemedicinehat.com

Exterior Wall Construction

Best Standard in the Housing Industry!

2"X6" EXTERIOR WALLS CONSTRUCTED @ 24" O/C TO MAXIMIZE ENERGY EFFICIENCY

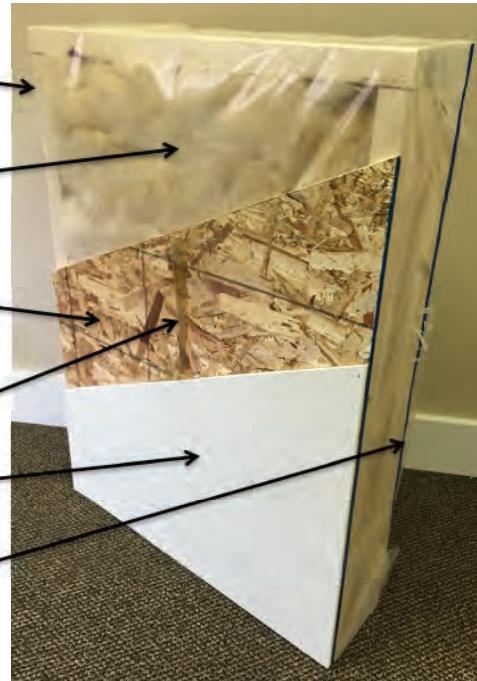
R22 INSULATION WITH 6 MIL POLY (ZONES 6 TO 8 UNDER 9.36 ENERGY CODE)

3/8" STRUCTURAL INTERIOR OSB FOR THE STRONGEST WALL IN THE INDUSTRY

ALPHA GLUE TO MAXIMIZE STRENGTH AND MAINTAIN HOMES INTEGRITY

1/2" VINYL COVERED GYPROC FASTENED TO OSB USING ALPHA GLUE SYSTEM

3/8" STRUCTURAL EXTERIOR OSB FASTENED TO STUDS WITH SHEATHING STAPLES



"We surpass the competition!"



Follow us:

