



Pacific
Park Models



Scan on your Mobile Device
to see all of our homes online.



"All the Comforts of Home"



Moduline
Homes

CANADIAN BUILT
SINCE 1970

MODULINEMEDICINEHAT.COM

Pacific Park Models

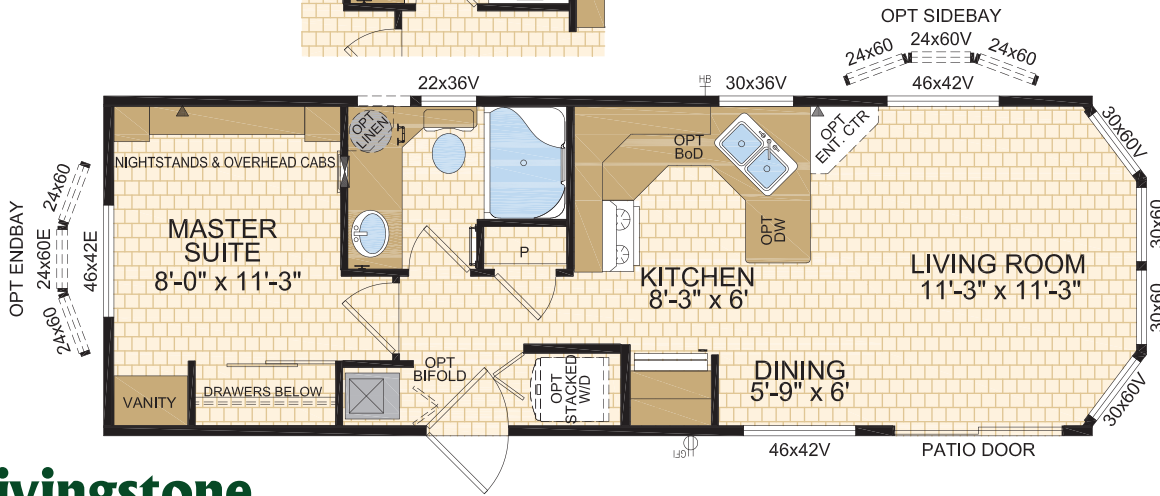
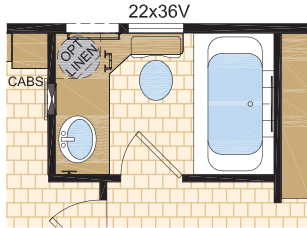
Bailey

Model 12036
12' x 36' ~ 432 sq.ft.



Options shown in image: 9 Lite Rear Door, Trap Windows.

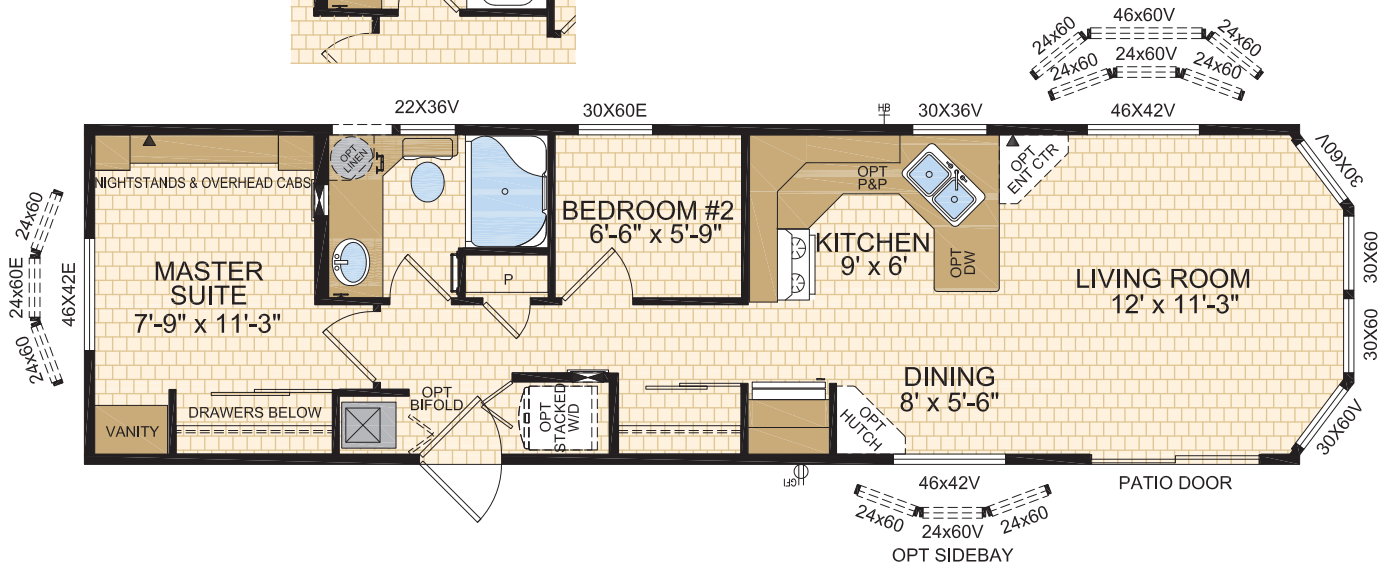
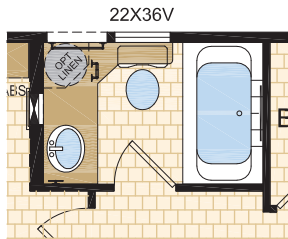
OPTIONAL LAYOUT



Livingstone

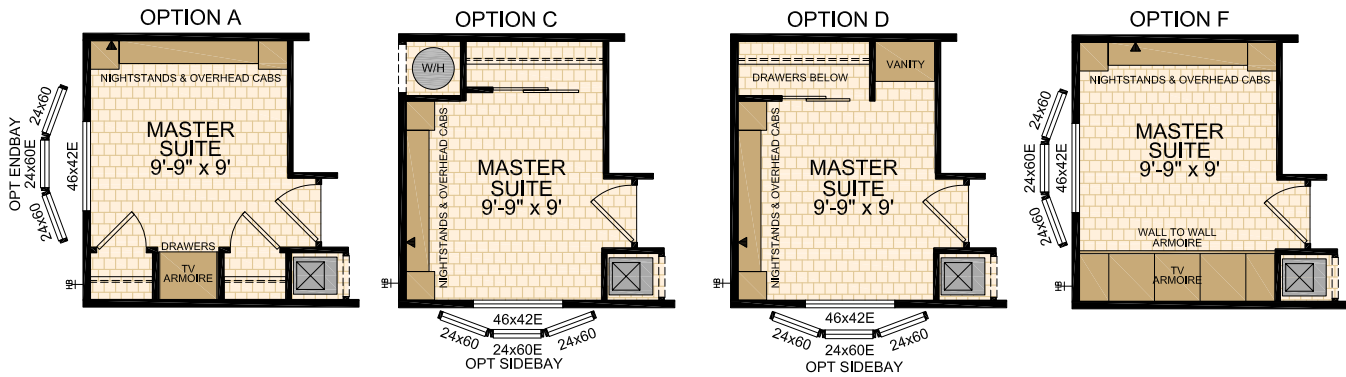
Model 12244
12' x 44' ~ 528 sq.ft.

OPTIONAL LAYOUT



Pacific Park Models

Optional Master Suite Layouts



Standard Features & Specifications

General Construction	
Building Code	Z-241
Snow Load	Live load 42 psf (2.01 kPa) Ground snow load 72.6 psf (3.48 kPa)
Insulation R Values	Floors R-20, Walls R-12 & Ceiling R-28
Floor	2"x8" floor joists @ 16" o.c. Heavy tubular steel frame w/detachable hitch & lunette eye connection
Decking	19/32" T & G OSB floor decking; glued and screwed
Roof	7/12 roof pitch, 4/12 interior - 12' Wides 5.5/12 roof pitch, 4/12 interior - 13' Wides 5.5/12 roof pitch, 3.5/12 interior - 14' Wides Engineered roof trusses 7/16" roof sheathing Architectural asphalt shingles - limited lifetime warranty
Eaves	12" sides & rear, 18" front vented eaves
Siding	Maintenance free vinyl lap siding & corners
Fascia	Coloured metal
Soffit	White vinyl
Building Envelope	Meets 0.20 L/M2S
Exterior Walls	2"x4", 24" o.c.
Interior Walls	3/8" OSB sheathing inside & outside of wall 2"x3" Interior walls 6 mil Interior vapour barrier
Ceiling	8' Textured (primed) gyproc cathedral ceiling
Windows	1.36 U-value, dual low E argon filled PVC c/w vinyl sills, screens and security locks
Master Bedroom	46x42v - Sliding
Secondary Bdrms	30x60v - Sliding
Kitchen (most models)	30x36v - Sliding
Bathroom	22x36v Obscure - Sliding
Living Room Bay	30x60v - Sliding x 2 & 30x60 - Picture x 2
Living Room Side	46x42v - Sliding
Dining Room	46x42v - Sliding
Exterior Doors	32" Decorative insulated entry door - Rear Includes deadbolt & peephole Residential vinyl Patio Door Round door knob - satin nickel Coach lights at all exterior entrances

Spacious Baths	
Tile	Single row deluxe tile w/metal edging
Fixtures	One-piece quality fiberglass 4' Shower w/sliding glass doors White oval drop in sink Single flush residential style toilet
Faucets	Dual handle vanity faucets Single lever faucet on shower unit
Hardware	Towel bar, ring & paper holder - chrome
Vanity	Expansive vanity mirrors Banjo vanity style 32" vanity height or 36" height if HWT under countertop
Electrical	GFI receptacle Power bath fan(s) on separate switch
Lighting	Hampton light fixture

Tasteful Interiors	
Flooring	Quality linoleum flooring throughout
Blinds	2" Cellular cordless blinds (excl bathrooms & trap windows)
Interior Doors	Pre-finished interior passage doors in Crystal White colour Bifold at Opt Washer/Dryer location
Interior Door Handles	Round door knob - satin nickel Privacy locks on bathroom doors excluding ensuites. If bathroom is an ensuite, bdrm door will have privacy set.
Closets	Solid white shelving
Master Bdrm Cabinets	Nightstands & overhead cabinets w/shelf (select models) Built-In Vanity (open below) w/mirror & light (select models)
Wall Finish	Decorative 1/2" vinyl on gyproc (VOG) Battens on joints
Moulding ¹	Vinyl wrapped, cathedral moulding throughout Colour - décor specific #3007 (2-1/4") Vault #451 (2-5/8") #215 (1-1/2")
Windows & Doors	
Ceiling	
Baseboards	
Electrical	Decora switches & recepts - white
Lighting	Ceiling mount in all bdrms & halls Decorative chandelier in dining room - chrome

Bright, Beautiful Kitchens	
Tile	Single row deluxe tile w/metal edging
Range	30" easy clean propane - white Exterior vented range hood w/light - white
Fridge	19 cu.ft., 2-door, frost free - white Opening: 34"x73"
Sink	Double stainless steel sink Dual handle faucet - chrome
Pantry	Select models
Cabinets	Doweled, full modular cabinetry Cabinet crown moulding Five distinctive colors of cabinet doors
Countertop	Arborite
Lighting	Ceiling mount

Utility Services	
Electrical Service	50 amp w/ 25' cord
Heating	Mid efficiency non condensing gas furnace Natural gas / propane Dual Stage programmable thermostat
Water Heater	30 gallon electric (220v) 3m Insulated water lines on hot & cold
Gas Line	Exterior Propane Line
Electrical - Other	Primary exhaust fan w/dehumidistat & switch Smoke detectors w/battery backup in bdrms CO2/Smoke Detector(s) w/battery backup locations as per code Arc fault protection as required by code GFI protected receptacle for heat tape Exterior GFI electrical outlet Blank communication outlet: living room (1), master bdrm (1)
Plumbing - Other	Exterior frost free water tap



CANADIAN BUILT
SINCE 1970

Exterior Wall Construction

Best Standard in the Housing Industry!

2"X6" EXTERIOR WALLS CONSTRUCTED @ 24" O/C TO MAXIMIZE ENERGY EFFICIENCY

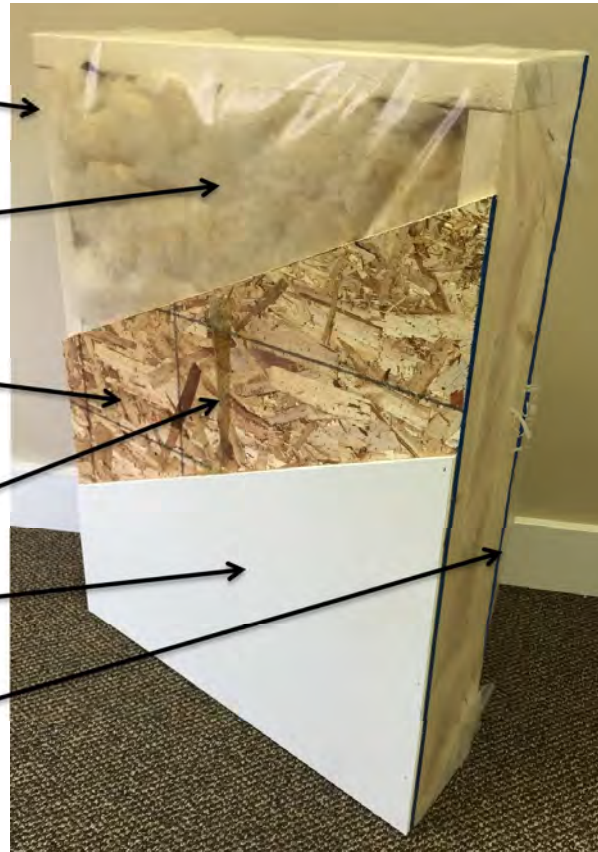
R22 INSULATION WITH 6 MIL POLY (ZONES 6 TO 8 UNDER 9.36 ENERGY CODE)

3/8" STRUCTURAL INTERIOR OSB FOR THE STRONGEST WALL IN THE INDUSTRY

ALPHA GLUE TO MAXIMIZE STRENGTH AND MAINTAIN HOMES INTEGRITY

1/2" VINYL COVERED GYPROC FASTENED TO OSB USING ALPHA GLUE SYSTEM

3/8" STRUCTURAL EXTERIOR OSB FASTENED TO STUDS WITH SHEATHING STAPLES



"We surpass the competition!"



MODULINEMEDICINEHAT.COM

1421 Brier Park Crescent, Medicine Hat, Alberta T1C 1T8 Phone: (403) 527-1555 Fax: (403) 528-4486

In a continued effort to meet the challenges of product improvement, we reserve the right to modify plans, specifications and features without prior notice. Some homes may show optional items which are not standard. Please consult your dealer representative for details. Square footage and room sizes are approximate. Printed in Canada 2/25