



20' and 22' Wide Homes



Scan on your Mobile Device to see all of our homes online.



[www.modulinemedicinehat.com](http://www.modulinemedicinehat.com)

# THE RIDGELAND SERIES

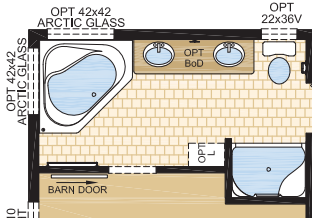
## Belmont

### Model 20800

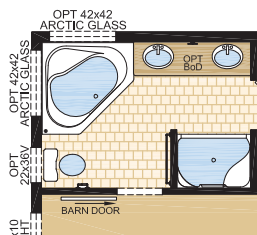
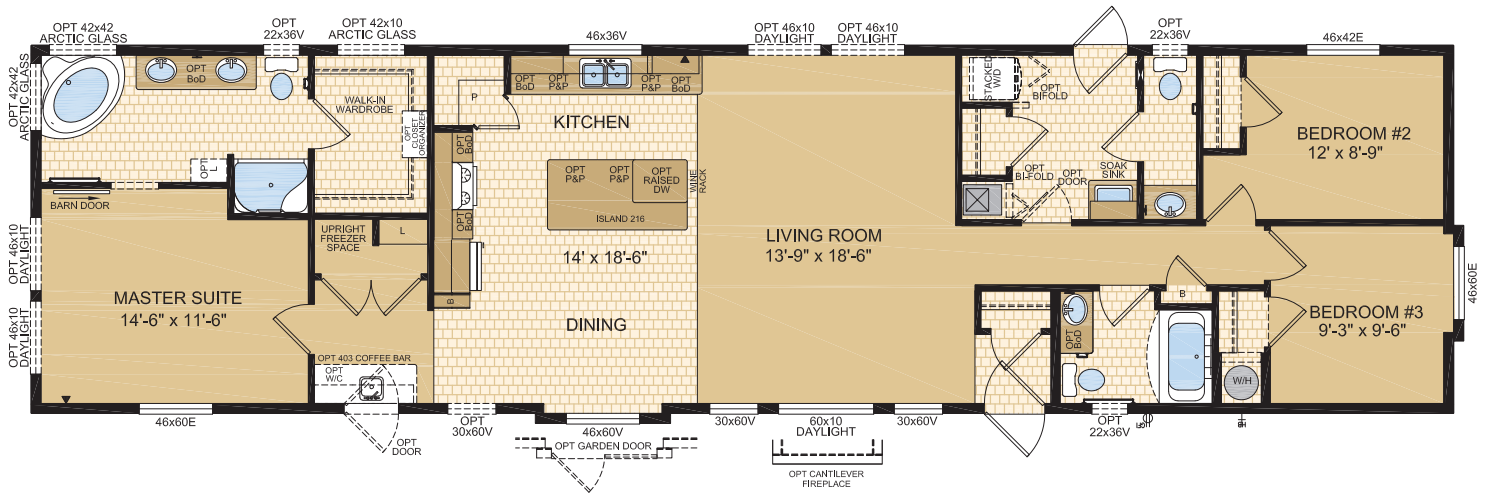
20' x 76' • 1,520 sq. ft.

3 Beds | 2.5 Baths

Ensuite Shown with  
Optional Deluxe  
Jetted Corner Oval Tub



Options shown in image: 9-lite Front Door, Apex Exterior.



Ensuite Shown with  
Optional Deluxe  
Jetted Corner Oval Tub

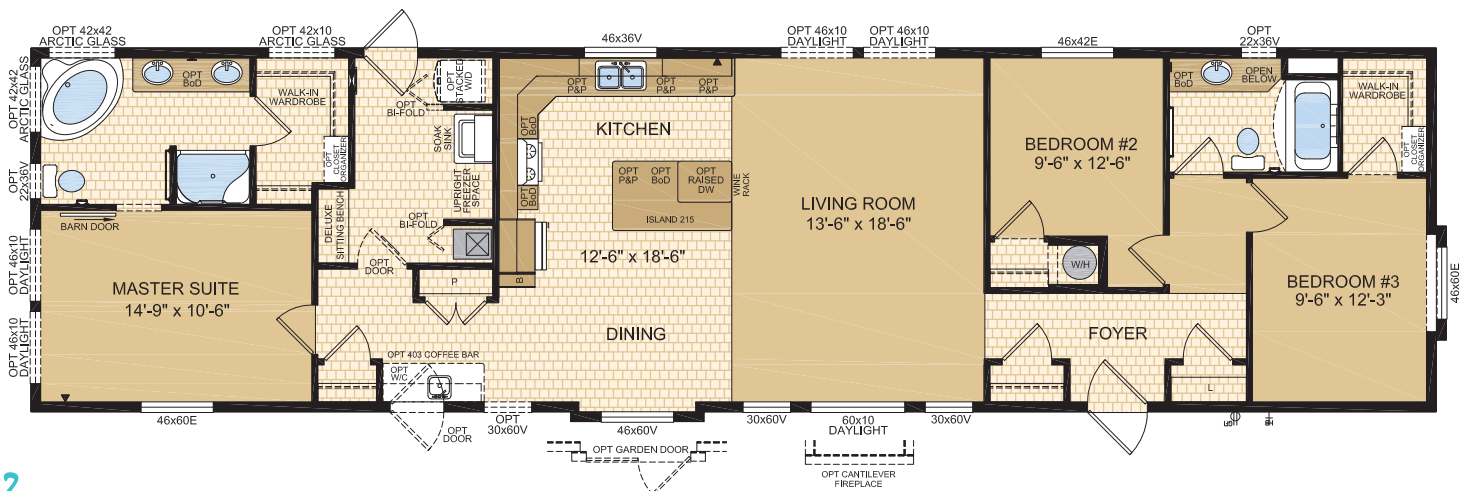
## Norfolk

### Model 20801

20' x 76' • 1,520 sq. ft.

3 Beds | 2 Baths

Note: Artist Rendering on front cover





# THE RIDGELAND SERIES

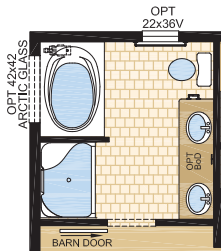
## Brookhill

### Model 22800

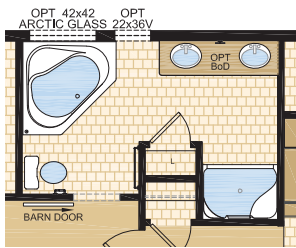
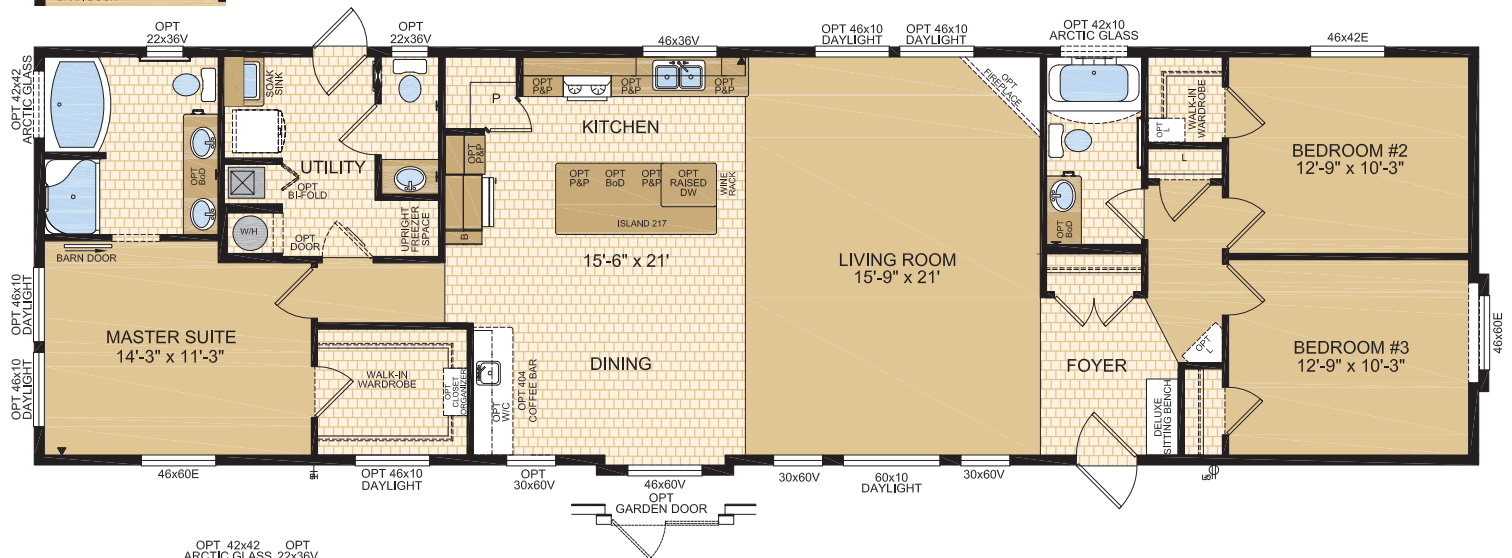
22' x 76' • 1,672 sq. ft.

3 Beds | 2.5 Baths

Ensuite Shown with  
Optional Deluxe  
Jetted Tub



Options shown in image: 9-lite Front Door, Daylight Windows, 30x60v Window, Pinnacle Exterior.



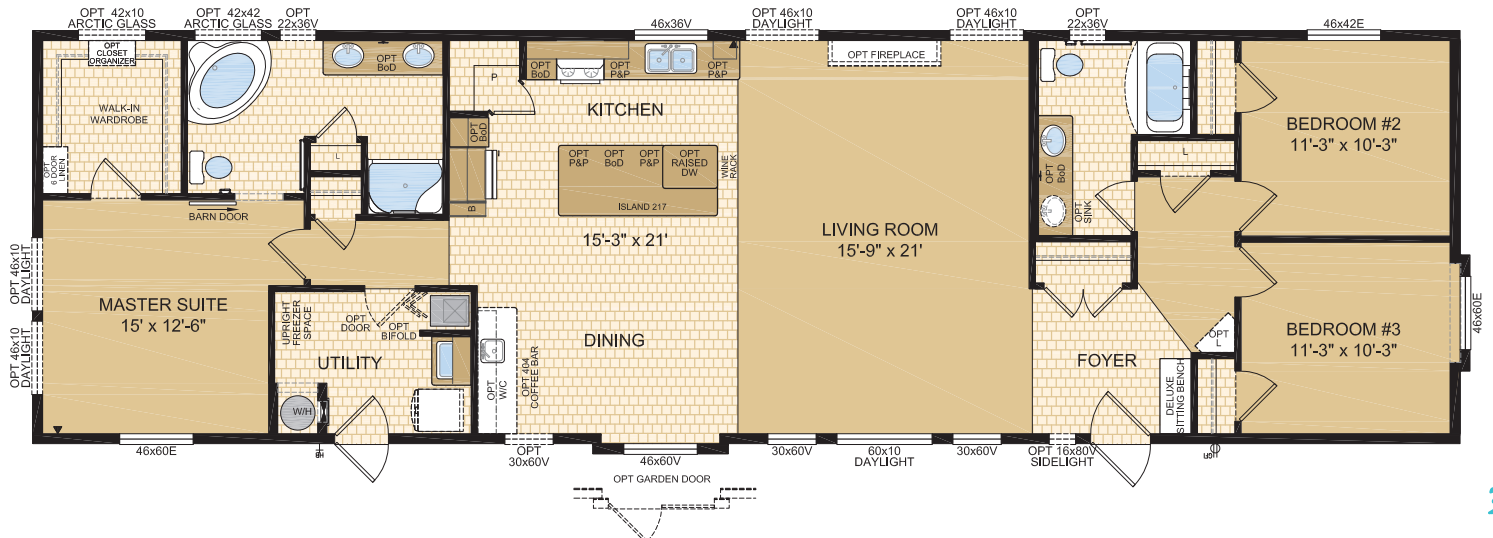
Ensuite Shown with  
Optional Deluxe  
Jetted Corner Oval Tub

## Coventry

### Model 22801

22' x 76' • 1,672 sq. ft.

3 Beds | 2 Baths



# STANDARD FEATURES & SPECIFICATIONS

General Construction	
Building Code	A-277 Zone 7A*
Snow Load	Live load 42 psf (2.01 kPa) Ground snow load 72.6 psf (3.48 kPa)
Insulation R Values	Floors R-48, Walls R-22 & Ceiling R-40 (min) Meets zone 8 of the 9.36 Energy Code**
Floor	2"x10" floor joists @ 16" o.c. on 20' wides Engineered open web truss floor on 22' wides at 19.2" o.c Heavy tubular steel frame w/detachable hitch
Decking	19/32" T & G OSB floor decking; glued and screwed
Roof	4/12 roof pitch; engineered roof trusses 7/16" roof sheathing Architectural asphalt shingles - limited lifetime warranty
Eaves	12" sides, 18" front & rear vented eaves
Siding	Maintenance free vinyl lap siding & corners
Weather Protection	White house wrap
Fascia	Coloured metal
Soffit	White vinyl
Building Envelope	Meets 0.20 L/M2S
Exterior Walls	2"x6", 24" o.c. 3/8" OSB sheathing inside & outside of wall
Interior Walls	2"x4" Interior walls 8' ceilings Cathedral ceiling throughout
Ceiling	Textured (primed) gyproc ceiling
Windows	1.36 U-value, dual low E argon filled PVC (meets zone 8 of the 9.36 Energy Code)* c/w vinyl sills, screens and security locks
Living Room	Window pkg featuring 2- 30x60 vented windows & large 60"x14" daylight window
Dining Room	46x60v - Sliding
Bedrooms	46x60v - Sliding (master bdrm) 46x60v - Sliding (front bdrm) 46x42v - Sliding (all other bdrms)
Kitchen	46x36v - Sliding
Exterior Doors	36" Decorative insulated entry door - Front 32" Decorative insulated entry door - Rear Includes deadbolt & peephole Round door knob - satin nickel Coach lights at all exterior entrances
Exterior Decorative	Large double-dormer over living room windows (25' overall width) Mbdm & Front Bdrm window dormers Box Bay at dining room window

Utility Services	
Electrical Service	100 amp
Heating	High efficiency (95+AFUE) single stage furnace Natural gas / propane Programmable thermostat
Water Heater	33 Imp. (40 US) gallon electric 3m Insulated water lines on hot & cold
Washer / Dryer	Plumbed, wired & vented for stacking washer/dryer
Electrical - Other	Primary exhaust fan w/dehumidistat & switch Smoke detectors w/battery backup in bdrms CO/Smoke Detector(s) w/battery backup locations as per code Arc fault protection as required by code GFI protected receptacle for heat tape Dedicated receptacle in "Freezer Area" Exterior GFI electrical outlet by front door Blank communication outlet: kitchen (1), master bdrm (1)
Plumbing - Other	Exterior frost free water tap Soak sink w/base cabinet

Tasteful Interiors	
Flooring	Carpet in living room, halls, and all bedrooms Quality linoleum flooring all other areas
Blinds	Cellular cordless blinds (excl bathrooms)
Interior Doors	Conmore passage doors - white Barn door to ensuite bath
Interior Door Handles	Round door knob - satin nickel Privacy locks on bathroom doors excluding ensuites. If bathroom is an ensuite, bdrm door will have privacy set.
Closets	Solid white shelving
Wall Finish	Decorative 1/2" vinyl on gyproc (VOG) Battens on joints
Moulding <sup>1</sup>	Vinyl wrapped Matches cabinet colour (excl white)
Windows & Doors	#3007 (2-1/4")
Ceiling	Flat & Vault #451 (2-5/8")
Baseboards	#3140 (3-1/4")
Electrical	Decora switches & recepts - white
Lighting	Ceiling mount in all bdrms, halls & utility room Decorative chandelier in dining room - chrome
Add'l Features	Deluxe sitting bench in UR (select models)

Bright, Beautiful Kitchens	
Tile	Single row w/metal tile edging
Range	30" electric - white Exterior vented range hood w/light - white
Fridge	19 cu.ft., 2-door, frost free - white Opening: 34" x 69-3/4"
Sink	Black anthracite Indi high rise faucet - chrome
Pantry	Spacious pantry (most models)
Cabinets	Doweled, full modular cabinetry Cabinet crown moulding Five distinctive colors of cabinet doors w/ matching moulding and trim colour Broom/storage closet beside fridge
Island	Large kitchen island w/ wine rack & raised location for opt dishwasher
Countertop	Arborite
Lighting	Pot lights x 5 (incl. one over sink) Cabinet valance w/ LED pot light over kitchen Sink

Spacious Baths	
Tile	Single row w/metal tile edging
Fixtures	One-piece quality fiberglass tub & shower unit - main bath One-piece quality fiberglass oval tub - Ensuite 4' shower w/seat & sliding glass doors - Ensuite White oval drop in sink - all baths Double vanity sinks - ensuite Single flush toilet
Faucets	Dual handle vanity faucets Single lever faucet on tub/shower unit
Hardware	Curved Shower rods in all full height tubs Towel bar, ring & paper holder - chrome
Vanity	Expansive vanity mirrors
Countertop Heights:	32" in main & secondary bathrooms 36" in ensuite
Electrical	GFI receptacle Power bath fan(s)
Lighting	Hampton light fixture



Follow us:



[www.modulinemedicinehat.com](http://www.modulinemedicinehat.com)

1421 Brier Park Crescent, Medicine Hat, Alberta T1C 1T8 Phone: (403) 527-1555 Fax: (403) 528-4486

In a continued effort to meet the challenges of product improvement, we reserve the right to modify plans, specifications and features without prior notice. Some homes may show optional items which are not standard. Please consult your dealer representative for details. Square footage and room sizes are approximate.