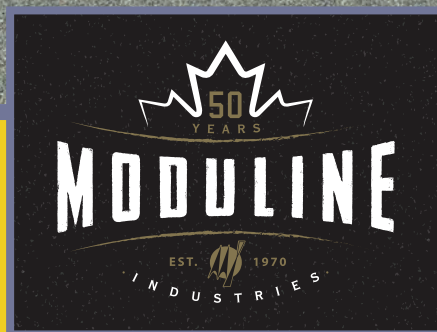


SILVERWOOD

SINGLE SECTION HOMES



Scan on your Mobile Device
to see all of our homes online.



www.modulinemedicinehat.com

STANDARD FEATURES & SPECIFICATIONS

General Construction	
Building Code	A-277 Zone 7A*
Snow Load	Live load 42 psf (2.01 kPa) Ground snow load 72.6 psf (3.48 kPa)
Insulation R Values	Floors R-48, Walls R-22 & Ceiling R-40 (min) Meets zone 8 of the 9.36 Energy Code**
Floor	2"x10" floor joists @ 16" o.c. (16 & 20 wide) Heavy tubular steel frame w/detachable hitch
Decking	19/32" T & G OSB floor decking; glued and screwed
Roof	4/12 roof pitch; engineered roof trusses 7/16" roof sheathing Architectural asphalt shingles - limited lifetime warranty
Eaves	18" front vented eaves (no side or rear eaves)
Siding	Maintenance free vinyl lap siding & corners
Weather Protection	White house wrap
Fascia	Coloured metal
Soffit	White vinyl
Building Envelope	Meets 0.20 L/M2S
Exterior Walls	2"x6", 24" o.c. 3/8" OSB sheathing inside & outside of wall
Interior Walls	2"x4" Interior walls 8' Flat ceilings
Ceiling	Textured (primed) gyproc ceiling
Windows	1.36 U-value, dual low E argon filled PVC (meets zone 8 of the 9.36 Energy Code)* c/w vinyl sills, screens and security locks
Living Room	72x60v - Sliding (20' wides)
Dining Room	60x60v - Sliding (16' wides or less)
Bedrooms	46x42v - Sliding
Kitchen (most models)	46x42v - Sliding
Exterior Doors	32" Decorative insulated entry doors - front & rear Includes deadbolt & peephole Round door knob - satin nickel Coach lights at all exterior entrances

Utility Services	
Electrical Service	100 amp
Heating	High efficiency (95+AFUE) single stage furnace Natural gas / propane Programmable thermostat
Water Heater	33 Imp. (40 US) gallon electric HWT 3m Insulated water lines on hot & cold
Washer / Dryer	Plumbed, wired & vented for side by side
Electrical - Other	Primary exhaust fan w/dehumidistat & switch Smoke detectors w/battery backup in bdrms CO/Smoke Detector(s) w/battery backup locations as per code Arc fault protection as required by code GFI protected receptacle for heat tape Exterior GFI electrical outlet Blank communication outlet - kitchen

Tasteful Interiors	
Flooring	Carpet in living room, all bdrms & hallways in 20' wides (lino in hallways of 16' wides) Quality linoleum flooring all other areas
Interior Doors	Pre-finished interior passage doors in Crystal White colour
Interior Door Handles	Round door knob - satin nickel Privacy locks on bathroom doors excluding ensuites. If bathroom is an ensuite, bdrm door will have privacy set.
Closets	Solid white shelving
Wall Finish	Covered gyproc throughout
Moulding ¹	Vinyl wrapped Matches cabinet colour (excl kodiak & white)
Windows & Doors	#3007 (2-1/4") Ceiling Flat #215 (1-1/2"); Opt Vault #3000 (1-5/8") Baseboards #215 (1-1/2")
Electrical	Switched receptacles in bedrooms
Lighting	Ceiling mount in halls & utility room Ceiling mount in dining room <i>Note: No lights in bdrms</i>

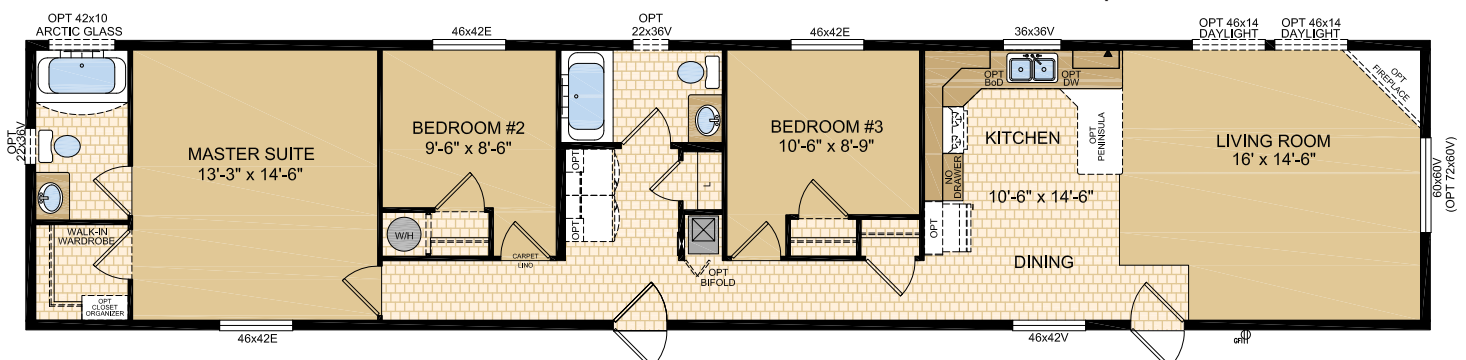
Bright, Beautiful Kitchens	
Tile	Single row Exterior vented range hood w/light - white
Fridge	Opening: 34" x 69-3/4"
Sink	Double stainless steel sink Dual handle faucet - chrome
Cabinets	Doweled, full modular cabinetry Five distinctive colors of cabinet doors w/ matching moulding & trim colour Peninsula kitchen (20' wides only)
Countertop	Arborite
Lighting	Ceiling mount

Spacious Baths	
Tile	Single row
Fixtures	One-piece quality fiberglass tub & shower units White oval drop in sink Single flush toilet
Faucets	Dual handle vanity faucets Single lever faucet on tub/shower unit
Vanity	Expansive vanity mirrors Countertop Heights: 32" in main & ensuite
Electrical	GFI receptacle Exhaust fan(s)
Lighting	Ceiling mount

Jamestown

Model 16401

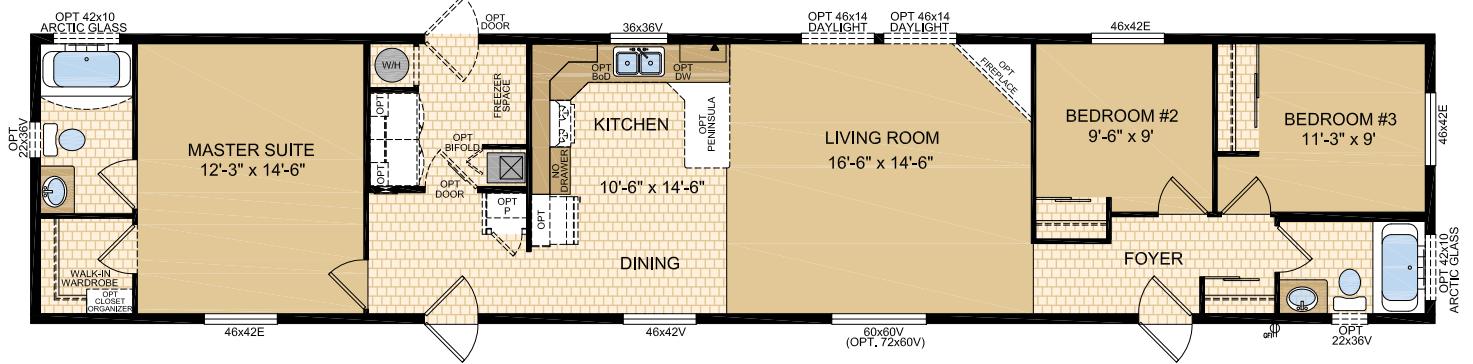
16' x 76' - 1,216 sq.ft.



Kalimore

Model 16405

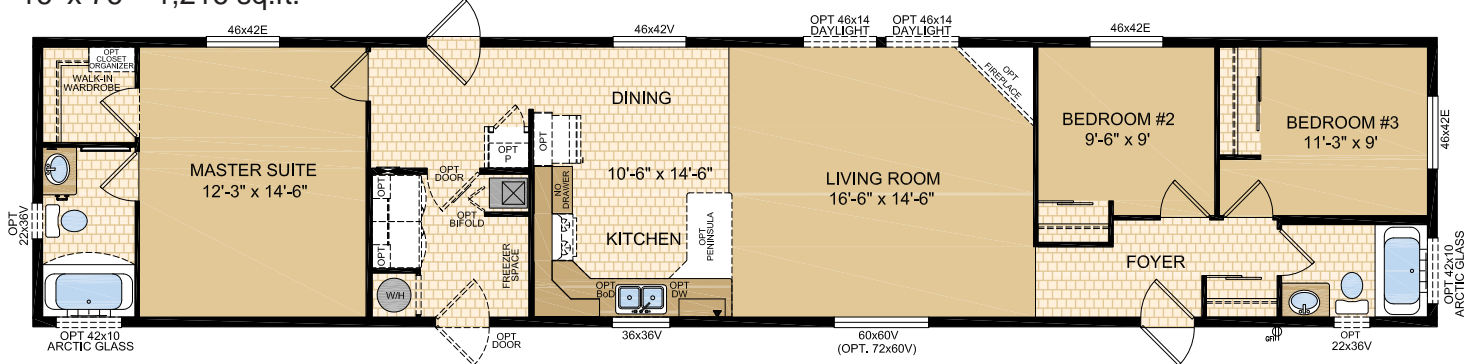
16' x 76' - 1,216 sq.ft. (Note: rendering shown on front cover)



Victoria

Model 16406

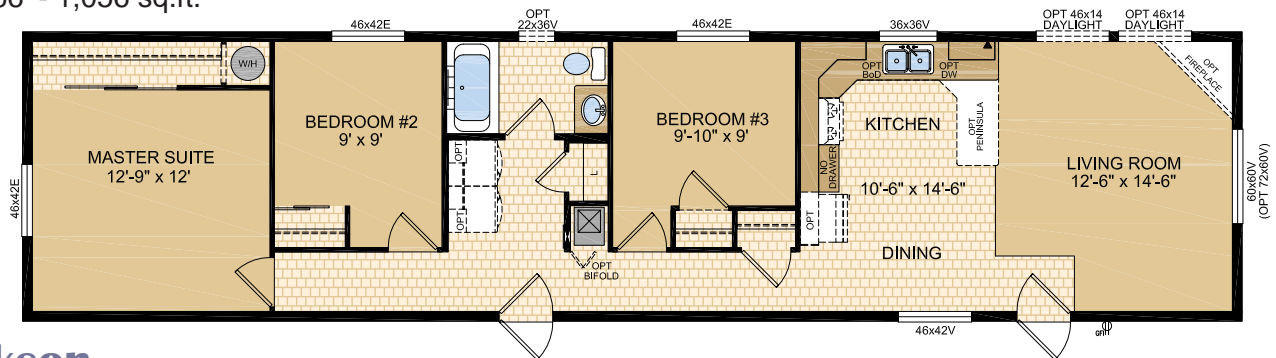
16' x 76' - 1,216 sq.ft.



Inverness

Model 16411

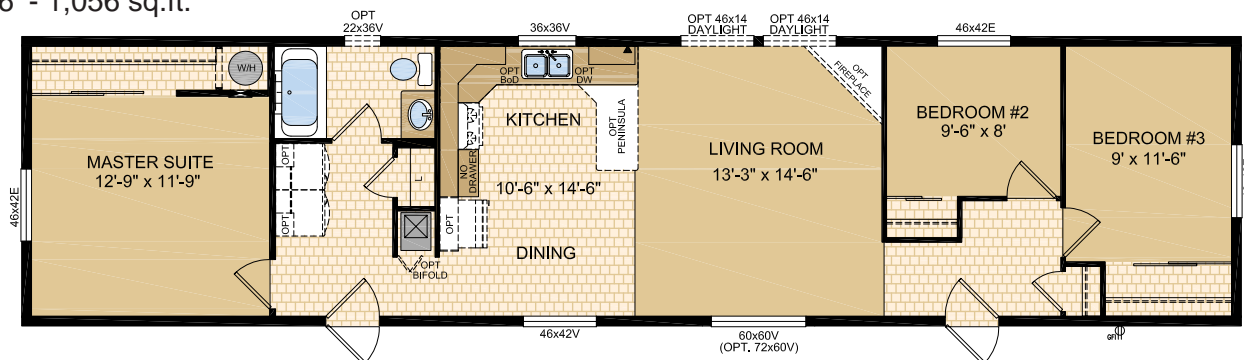
16' x 66' - 1,056 sq.ft.



Jackson

Model 16412

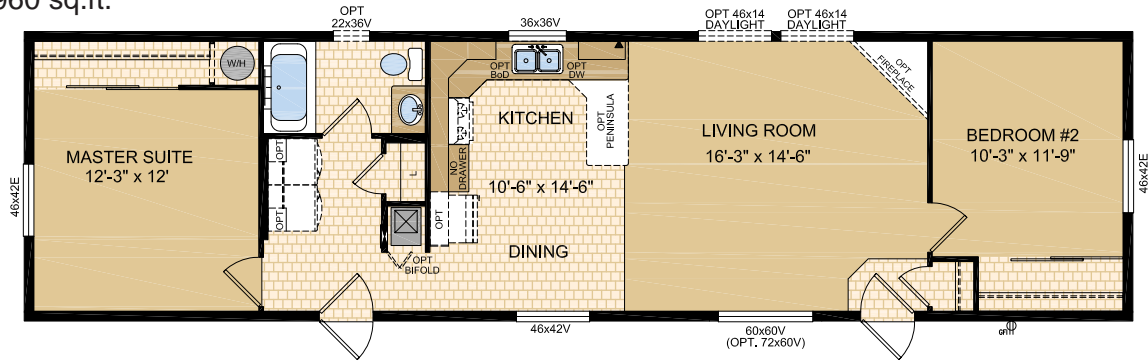
16' x 66' - 1,056 sq.ft.



Kelowna

Model 16422

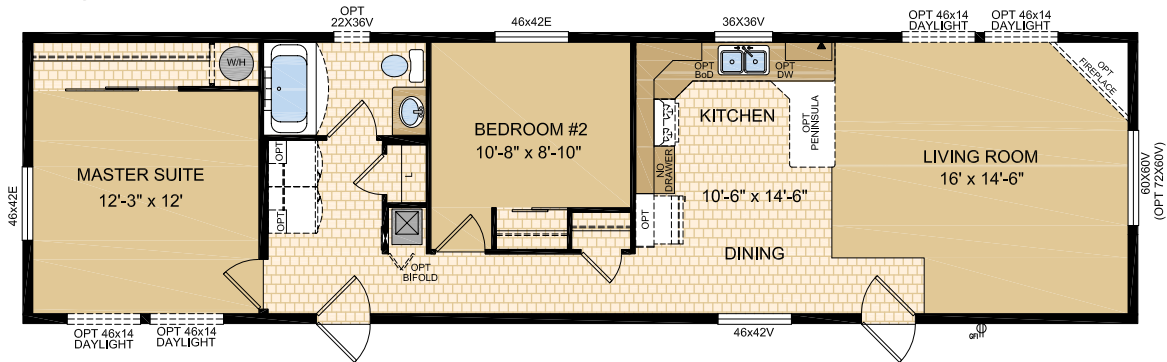
16' x 60' - 960 sq.ft.



Innsbruck

Model 16423

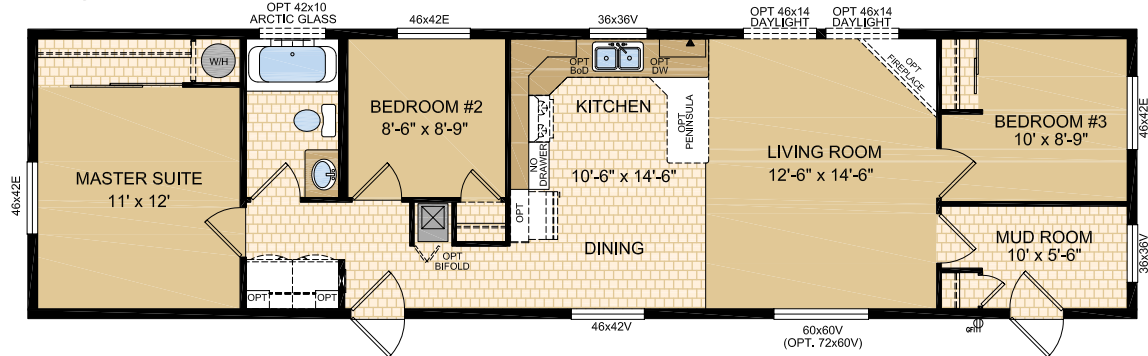
16' x 60' - 960 sq.ft.



Jamaica

Model 16426

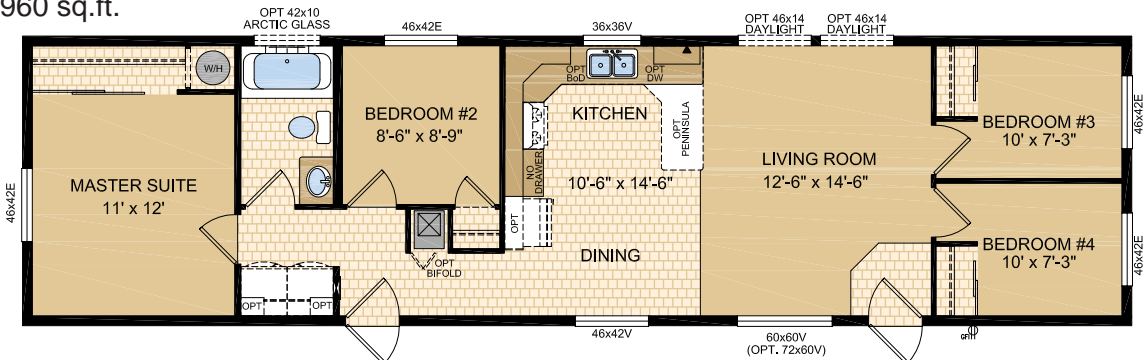
16' x 60' - 960 sq.ft.



Kampala

Model 16427

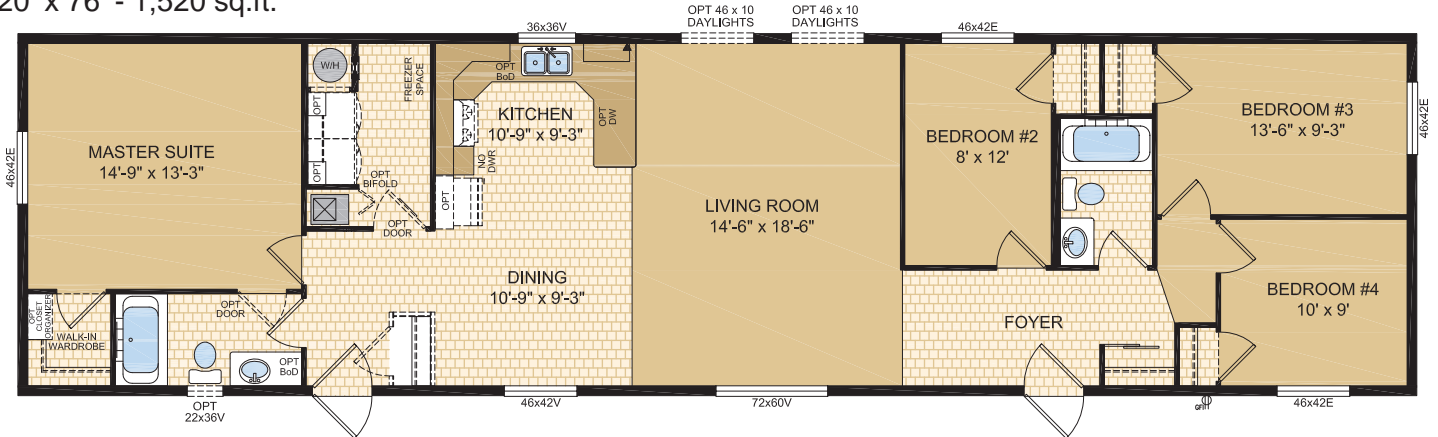
16' x 60' - 960 sq.ft.



Bayport

Model 20109

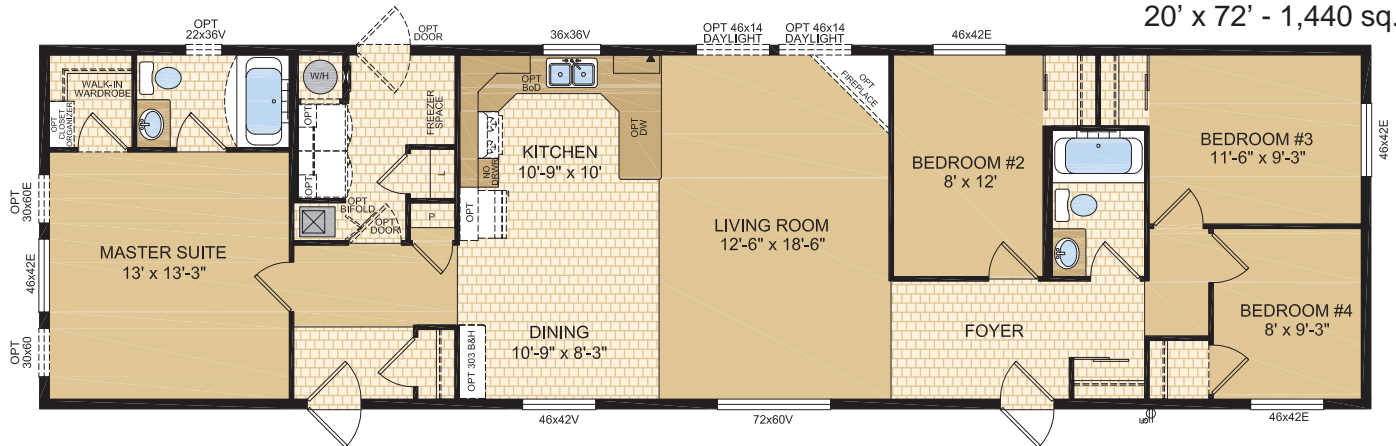
20' x 76' - 1,520 sq.ft.



Lauderdale

Model 20111

20' x 72' - 1,440 sq.ft.

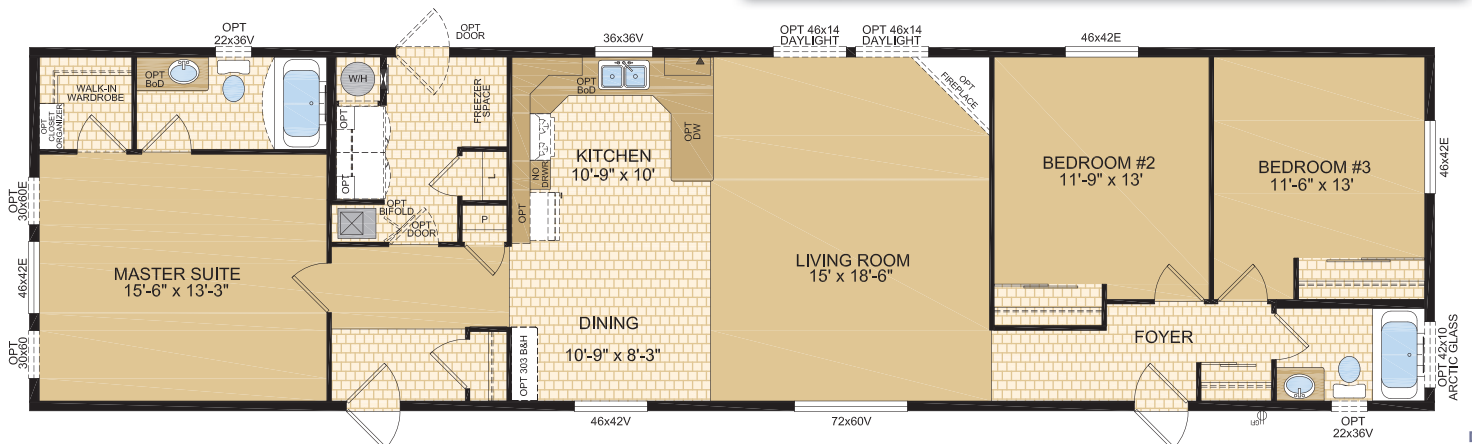


Nashville

Model 20112

20' x 76' - 1,520 sq.ft.

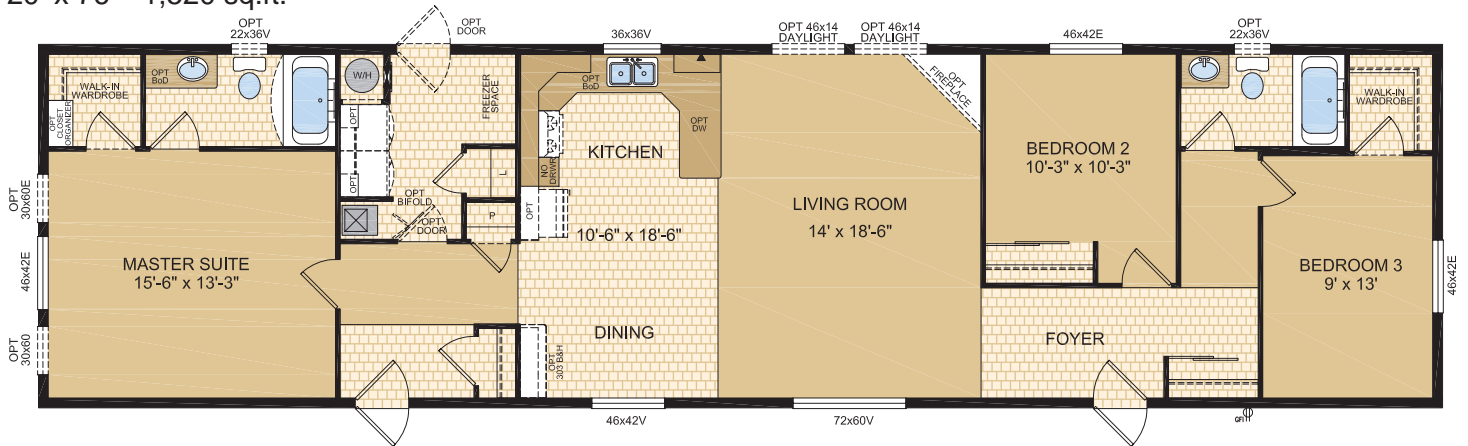
Options shown in image: Painted Smartboard Window Trim, 9-Lite Front & Rear Doors, Dormer, 46x10v Arctic Glass Window, 22x36v Bathroom Window, Extended Eaves.



Nantucket

Model 20113

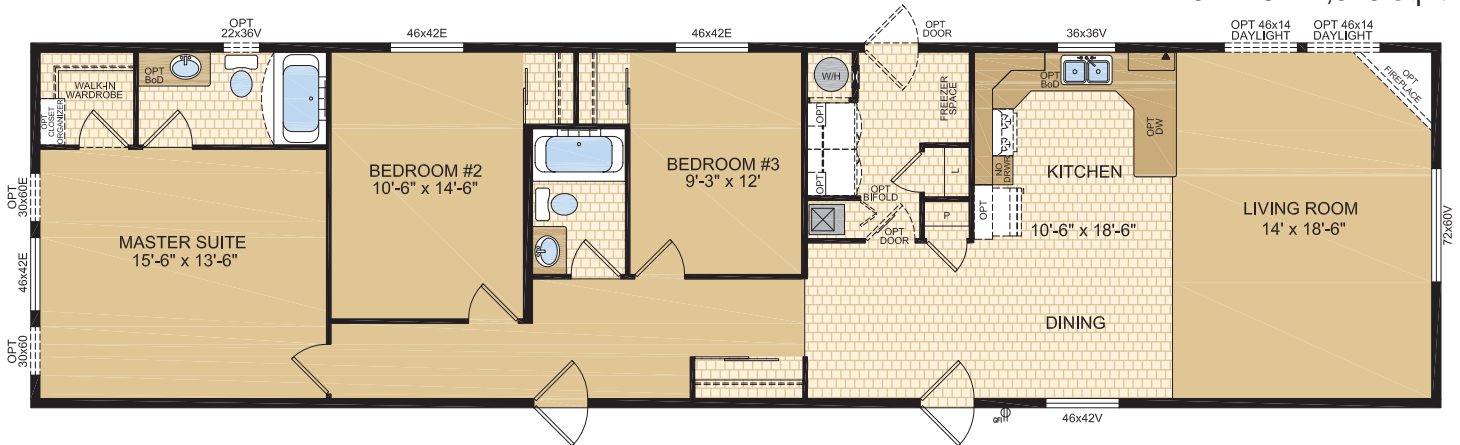
20' x 76' - 1,520 sq.ft.



Naples

Model 20114

20' x 76' - 1,520 sq.ft.

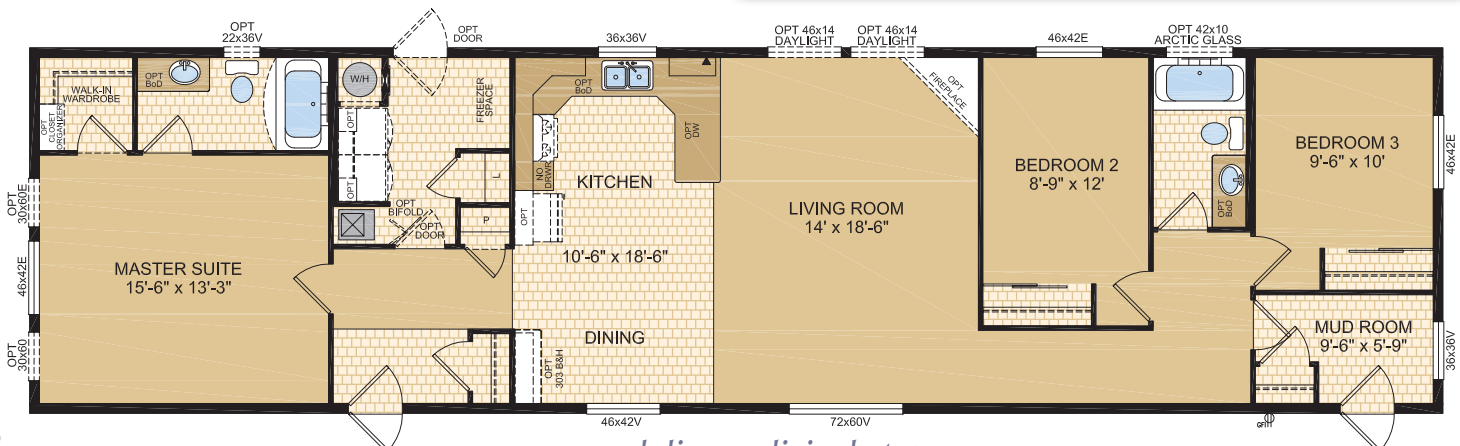


Olympia

Model 20115

20' x 76' - 1,520 sq.ft.

Options shown in image: Painted Smartboard Window Trim, 9-Lite Front & Rear Doors, Dormer, Extended Eaves.

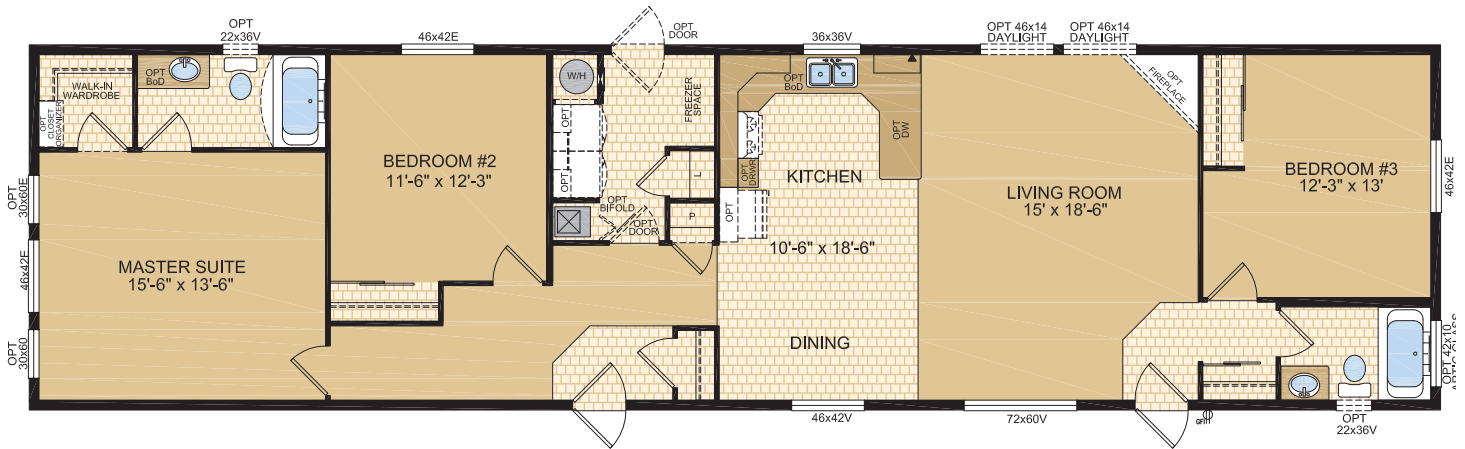


Nassau

Model 20116

20' x 76' - 1,520 sq.ft.

Options shown in image: Painted Smartboard Window Trim, 9-Lite Front & Rear Doors, Dormer, 22x36v Bathroom Window, 42x10 Arctic Glass Window, Extended Eaves.

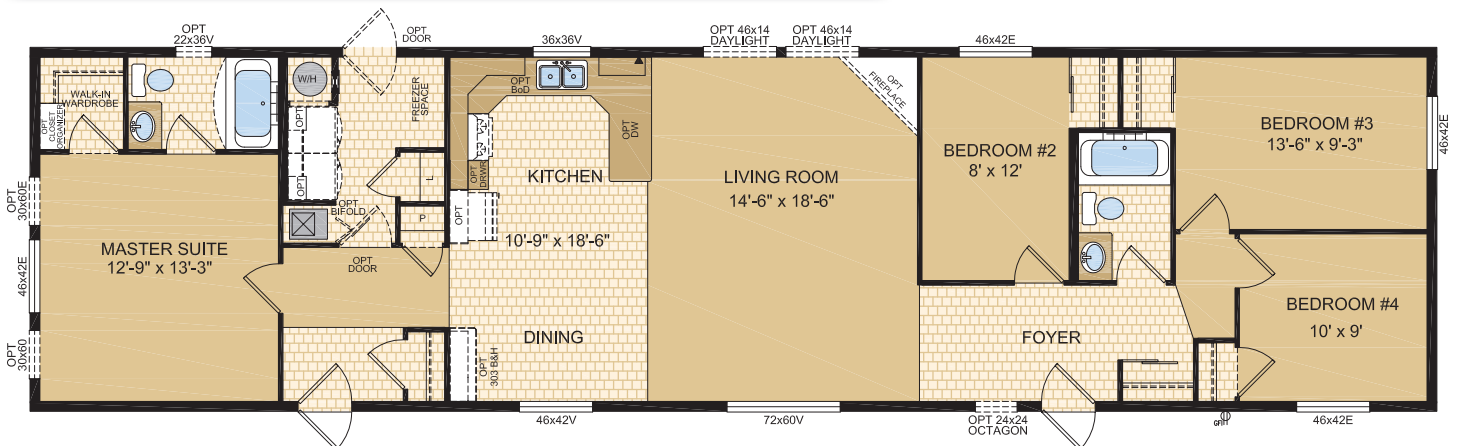


Orlando

Model 20117

20' x 76' - 1,520 sq.ft.

Options shown in image: Painted Smartboard Window Trim, 9-Lite Front & Rear Doors, Dormer, Extended Eaves.



SILVERWOOD

SINGLE SECTION HOMES



www.modulinemedicinehat.com

Exterior Wall Construction

Best Standard in the Housing Industry!

2"x6" EXTERIOR WALLS CONSTRUCTED
@ 24" O/C TO MAXIMIZE ENERGY
EFFICIENCY

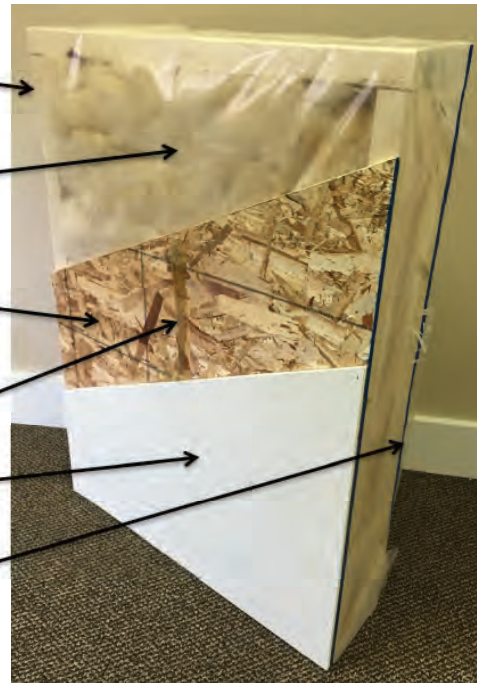
R22 INSULATION WITH 6 MIL POLY
(ZONES 6 TO 8 UNDER
9.36 ENERGY CODE)

3/8" STRUCTURAL INTERIOR OSB
FOR THE STRONGEST WALL IN THE
INDUSTRY

ALPHA GLUE TO MAXIMIZE STRENGTH AND
MAINTAIN HOMES INTEGRITY

1/2" VINYL COVERED GYPROC FASTENED
OSB USING ALPHA GLUE SYSTEM

3/8" STRUCTURAL EXTERIOR OSB FASTENED
TO STUDS WITH SHEATHING STAPLES



"We surpass the competition!"



Follow us:

