

# SILVERWOOD

## SINGLE SECTION HOMES



Scan on your Mobile Device  
to see all of our homes online.



**CANADIAN BUILT**  
SINCE 1970

[MODULINEMEDICINEHAT.COM](http://MODULINEMEDICINEHAT.COM)



## STANDARD FEATURES & SPECIFICATIONS

<u>General Construction</u>	
Building Code	A-277 Zone 7A*
Snow Load	Live load 42 psf (2.01 kPa) Ground snow load 72.6 psf (3.48 kPa)
Insulation R Values	Floors R-48, Walls R-22 & Ceiling R-40 (min) Meets zone 8 of the 9.36 Energy Code**
Floor	2"x10" floor joists @ 16" o.c. (16' wides) 2"x12" floor joists @ 16" o.c. (20' wides) Heavy tubular steel frame w/detachable hitch
Decking	19/32" T & G OSB floor decking; glued and screwed
Roof	4/12 roof pitch; engineered roof trusses 7/16" roof sheathing Architectural asphalt shingles - limited lifetime warranty
Eaves	18" front vented eaves (no side or rear eaves)
Siding	Maintenance free vinyl lap siding & corners
Weather Protection	White house wrap
Fascia	Coloured metal
Soffit	White vinyl
Building Envelope	Meets 0.20 L/M2S
Exterior Walls	2"x6", 24" o.c. 3/8" OSB sheathing inside & outside of wall
Interior Walls	2"x4" Interior walls 8' Flat ceilings
Ceiling	Textured (primed) gyproc ceiling
Windows	1.36 U-value, dual low E argon filled PVC (meets zone 8 of the 9.36 Energy Code)* c/w vinyl sills, screens and security locks
Living Room	72x60v - Sliding (20' wides) 60x60v - Sliding (16' wides or less)
Dining Room	46x42v - Sliding
Bedrooms	46x42v - Sliding
Kitchen (most models)	36x36v - Sliding
Exterior Doors	32" Decorative insulated entry doors - front & rear Includes deadbolt & peephole Round door knob - satin nickel Coach lights at all exterior entrances

<u>Utility Services</u>	
Electrical Service	100 amp
Heating	High efficiency (95+AFUE) single stage furnace Natural gas / propane Programmable thermostat
Water Heater	33 Imp. (40 US) gallon electric HWT 3m Insulated water lines on hot & cold
Washer / Dryer	Plumbed, wired & vented for side by side
Electrical - Other	Primary exhaust fan w/dehumidistat & switch Smoke detectors w/battery backup in bdrms CO/Smoke Detector(s) w/battery backup locations as per code Arc fault protection as required by code GFI protected receptacle for heat tape Exterior GFI electrical outlet Blank communication outlet - kitchen

<u>Tasteful Interiors</u>	
Flooring	Carpet in living room, all bdrms & hallways in 20' wides (lino in hallways of 16' wides) Quality linoleum flooring all other areas
Interior Doors	Pre-finished interior passage doors in Crystal White colour
Interior Door Handles	Round door knob - satin nickel Privacy locks on bathroom doors excluding ensuites. If bathroom is an ensuite, bdrm door will have privacy set.
Closets	Solid white shelving
Wall Finish	Covered gyproc throughout
Moulding <sup>1</sup>	Vinyl wrapped Colour - Décor Specific #3007 (2-1/4")
Windows & Doors	Flat #215 (1-1/2"); Opt Vault #3000 (1-5/8")
Ceiling	Flat #215 (1-1/2"); Opt Vault #3000 (1-5/8")
Baseboards	#215 (1-1/2")
Electrical	Switched receptacles in bedrooms
Lighting	Ceiling mount in halls & utility room Ceiling mount in dining room <i>Note: No lights in bdrms</i>

<u>Bright, Beautiful Kitchens</u>	
Tile	Single row
Range Hood	Range hood w/light - white
Fridge	Opening: 34" x 69-3/4"
Sink	Double stainless steel sink Dual handle faucet - chrome
Cabinets	Doweled, full modular cabinetry Five distinctive colors of cabinet doors Peninsula kitchen (20' wides only)
Countertop	Arborite
Lighting	Ceiling mount

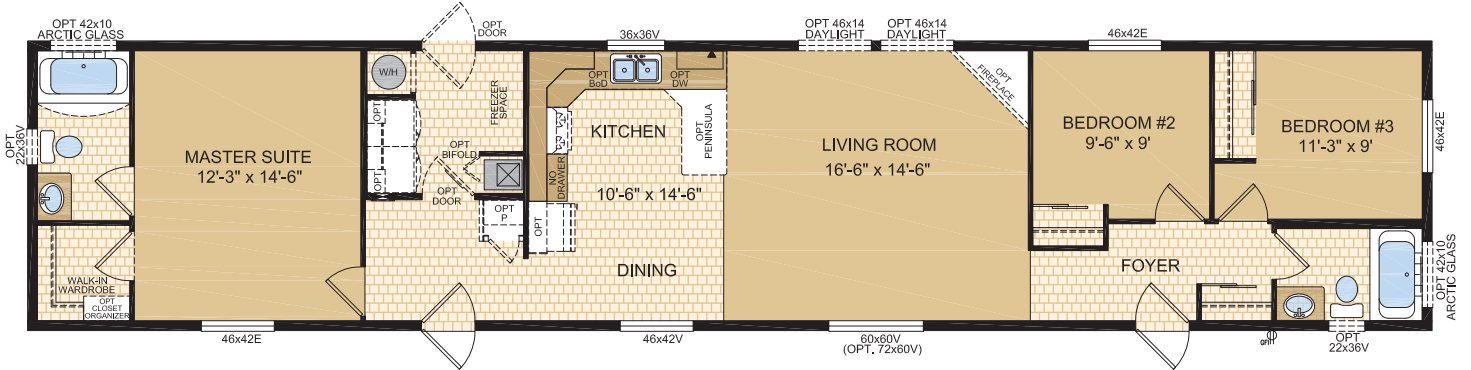
<u>Spacious Baths</u>	
Tile	Single row
Fixtures	One-piece quality fiberglass tub & shower units White oval drop in sink Single flush toilet
Faucets	Dual handle vanity faucets Single lever faucet on tub/shower unit
Vanity	Expansive vanity mirrors
Countertop Heights:	32" in main & ensuite
Electrical	GFI receptacle Exhaust fan(s)
Lighting	Ceiling mount



## Kalimore

Model 16405 (Note: rendering shown on front cover)

3 Beds | 2 Baths  
16' x 76' ~ 1,216 sq. ft.



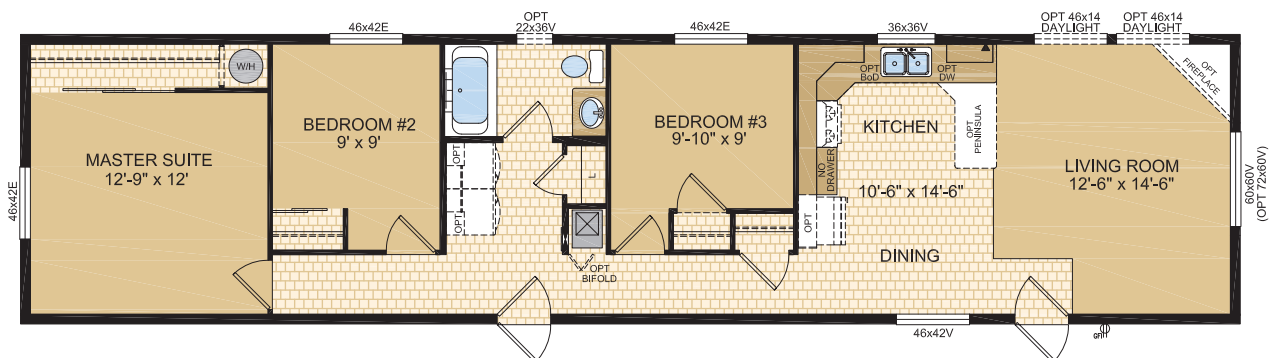
## Inverness

Model 16411

3 Beds | 1 Bath  
16' x 66' ~ 1,056 sq. ft.



Options shown in image: 9-Lite Front & Rear Doors, Dormer, Optional 72x60v Living Room Windows, Extended Eaves.

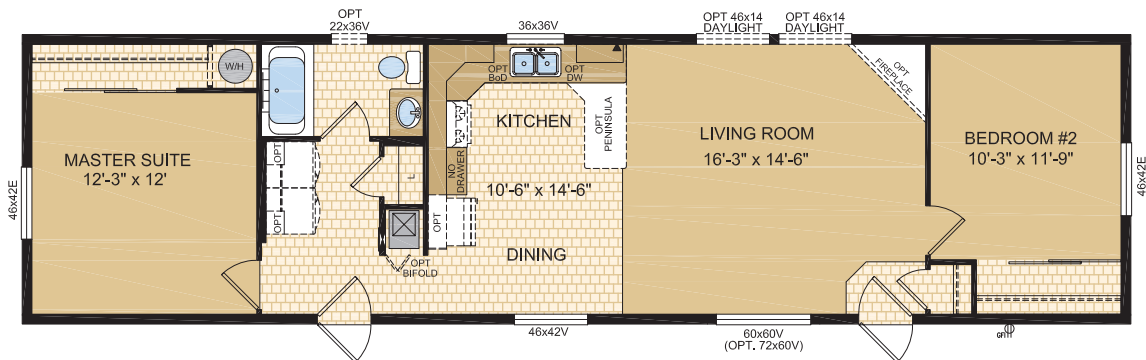


## Kelowna Model 16422

2 Beds | 1 Bath  
16' x 60' ~ 960 sq. ft.



Options shown in image: Painted Smartboard Window Trim, 9-Lite Front & Rear Doors, Dormer, Extended Eaves.

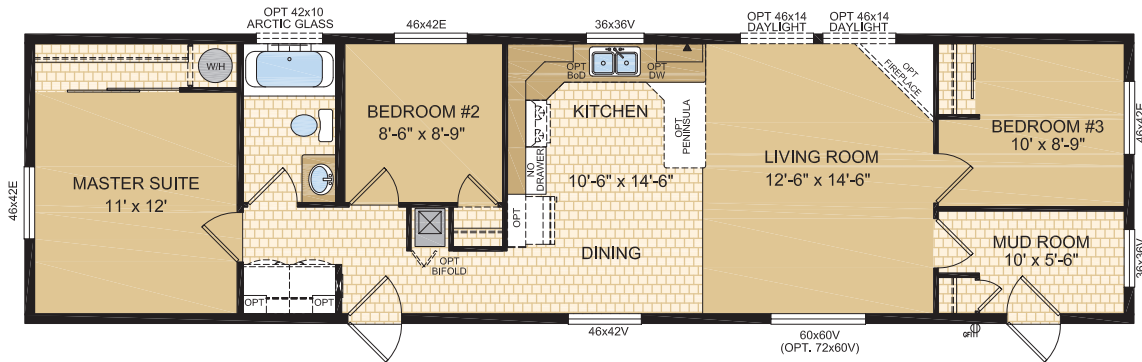


## Jamaica Model 16426

3 Beds | 1 Bath  
16' x 60' ~ 960 sq. ft.

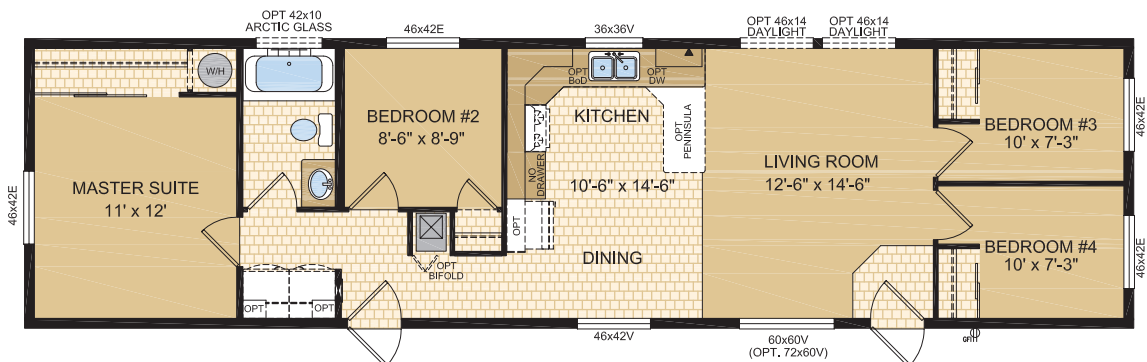


Options shown in image: Painted Smartboard Window Trim, 9-Lite Front & Rear Doors, Dormer, Extended Eaves.



## Kampala Model 16427

4 Beds | 1 Bath  
16' x 60' ~ 960 sq. ft.

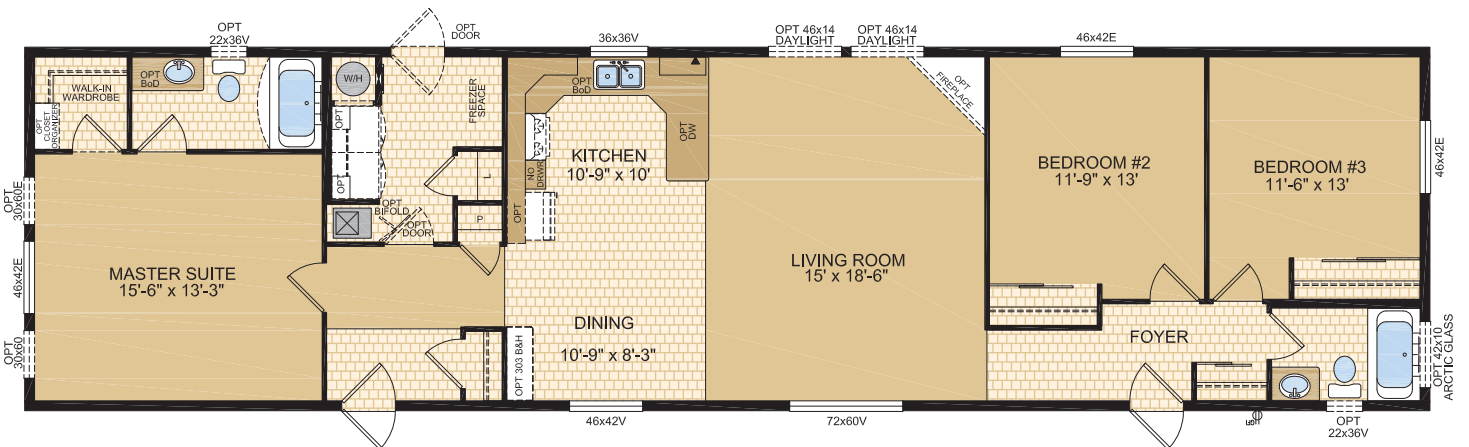


## Nashville Model 20112

3 Beds | 2 Baths  
20' x 76' ~ 1,520 sq. ft.



Options shown in image: Painted Smartboard Window Trim, 9-Lite Front & Rear Doors, Dormer, 46x10v Arctic Glass Window, 22x36v Bathroom Window, Extended Eaves.



# SILVERWOOD

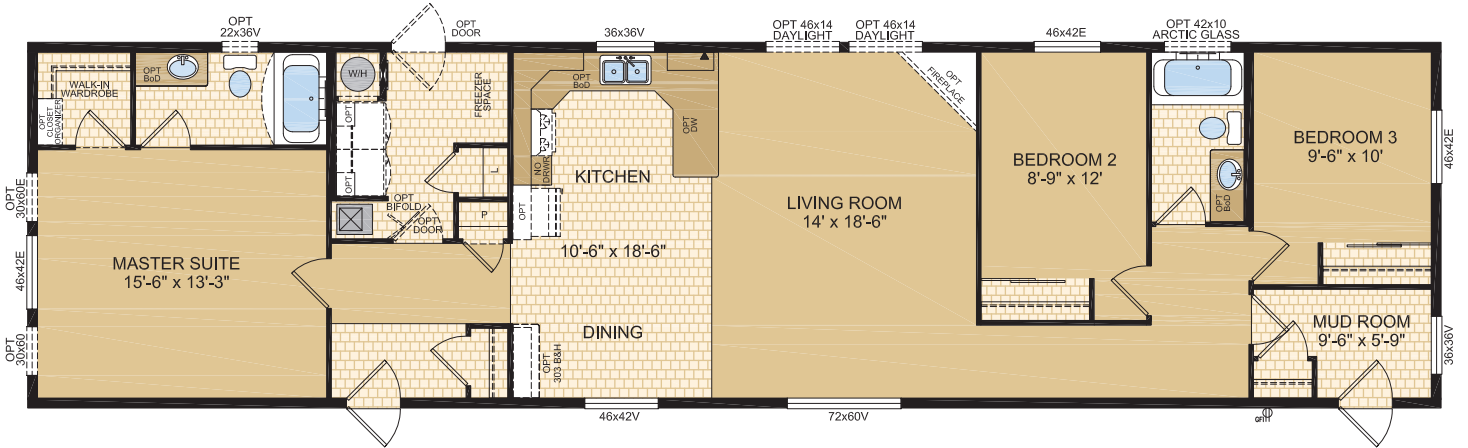
20' Wide Series

## Olympia Model 20115



3 Beds | 2 Baths  
20' x 76' ~ 1,520 sq. ft.

Options shown in image: Painted Smartboard Window Trim, 9-Lite Front & Rear Doors, Dormer, Extended Eaves.

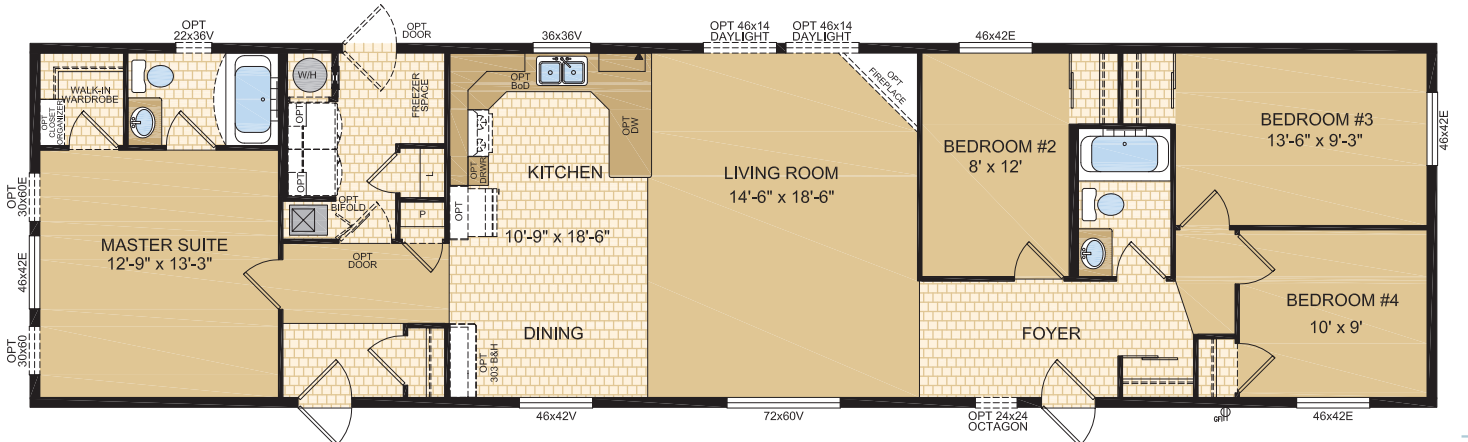


## Orlando Model 20117

4 Beds | 2 Baths  
20' x 76' ~ 1,520 sq. ft.



Options shown in image: Painted Smartboard Window Trim, 9-Lite Front & Rear Doors, Dormer, Extended Eaves.



# SILVERWOOD

SINGLE SECTION HOMES



**CANADIAN BUILT**  
SINCE 1970

## Exterior Wall Construction

*Best Standard in the Housing Industry!*

**2"X6" EXTERIOR WALLS CONSTRUCTED @ 24" O/C TO MAXIMIZE ENERGY EFFICIENCY**

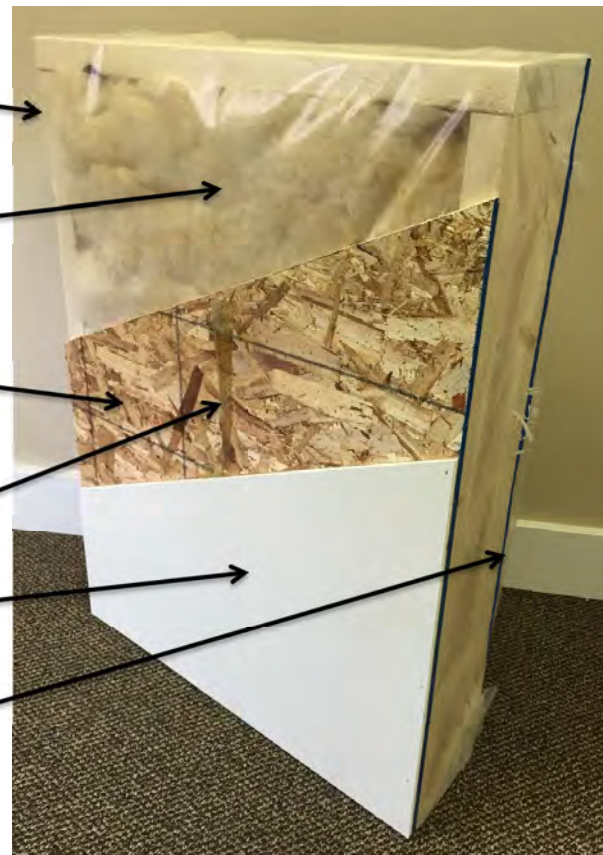
**R22 INSULATION WITH 6 MIL POLY (ZONES 6 TO 8 UNDER 9.36 ENERGY CODE)**

**3/8" STRUCTURAL INTERIOR OSB FOR THE STRONGEST WALL IN THE INDUSTRY**

**ALPHA GLUE TO MAXIMIZE STRENGTH AND MAINTAIN HOMES INTEGRITY**

**1/2" VINYL COVERED GYPROC FASTENED OSB USING ALPHA GLUE SYSTEM**

**3/8" STRUCTURAL EXTERIOR OSB FASTENED TO STUDS WITH SHEATHING STAPLES**



*"We surpass the competition!"*



**MODULINEMEDICINEHAT.COM**

1421 Brier Park Crescent, Medicine Hat, Alberta T1C 1T8 Phone: (403) 527-1555 Fax: (403) 528-4486

In a continued effort to meet the challenges of product improvement, we reserve the right to modify plans, specifications and features without prior notice. Some homes may show optional items which are not standard. Please consult your dealer representative for details. Square footage and room sizes are approximate. Printed in Canada 2/25