



# Lake House

## 14' Wides



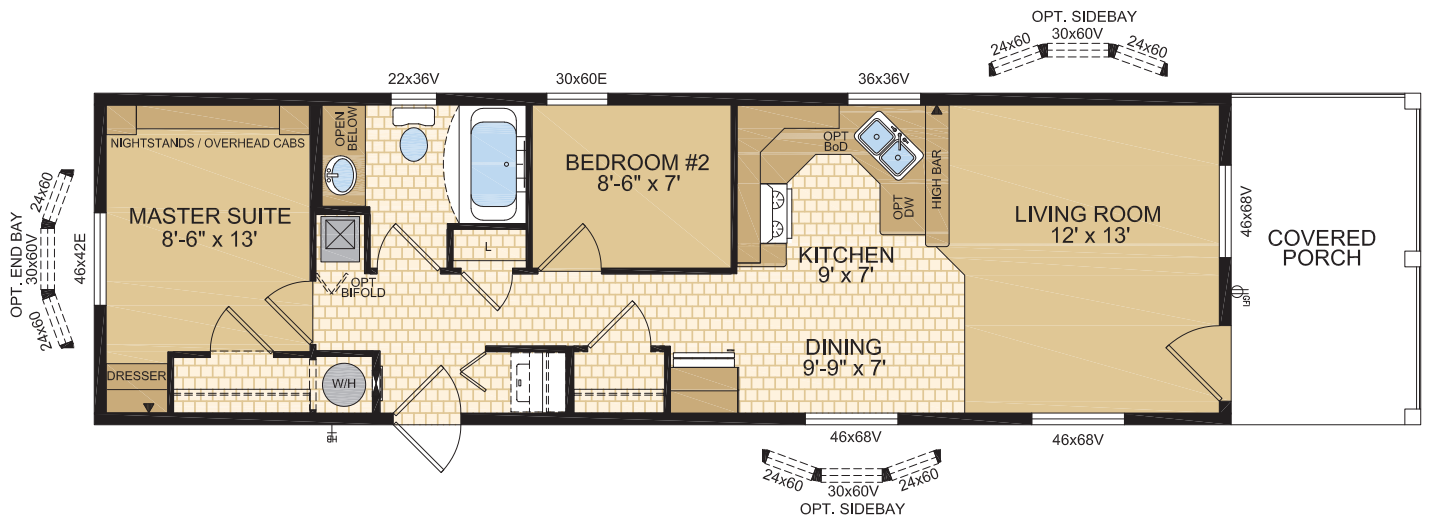
### Moduline Homes

CANADIAN BUILT  
SINCE 1970

## Clearwater

### Model 14133

14' x 56' ~ 784 sq.ft. (incl. covered porch)



1421 Brier Park Crescent, Medicine Hat, Alberta T1C 1T8 Phone: (403) 527-1555 Fax: (403) 528-4486 [modulinemedicinehat.com](http://modulinemedicinehat.com)

In a continued effort to meet the challenges of product improvement, we reserve the right to modify plans, specifications and features without prior notice. Some homes may show optional items which are not standard. Please consult your dealer representative for details. Square footage and room sizes are approximate.